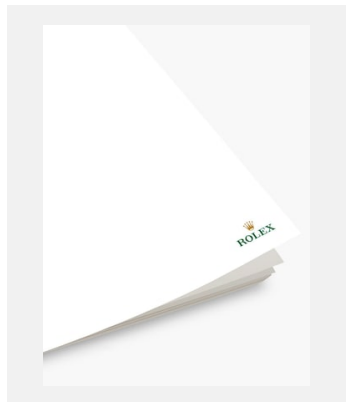


Planche-contact  
**DAY-DATE**

**DOCUMENTS**

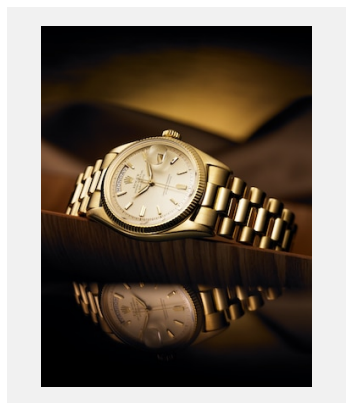


Réf.: rolex-media-brochure\_empty

Oyster Perpetual Day-Date –  
L'accomplissement d'un idéal

Crédits photo: © Rolex

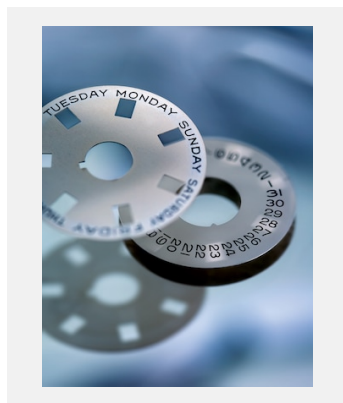
**VISUELS**



Réf.: 1956\_premiere-day-date\_6611\_003

Première Day-Date – 1956.

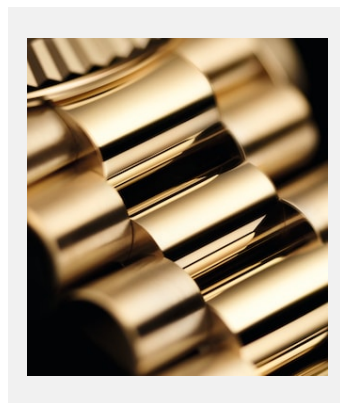
Crédits photo: ©Rolex/Jean-Daniel  
Meyer



Réf.: movt\_day-date\_1956\_14cw-02

Disques du jour et de la date de la  
Day-Date originale – 1956.

Crédits photo: ©Rolex/Cédric Widmer



Réf.: 02\_m128238-0069\_1901ac\_009

Oyster Perpetual Day-Date 36

Crédits photo: © Rolex/Alain Costa

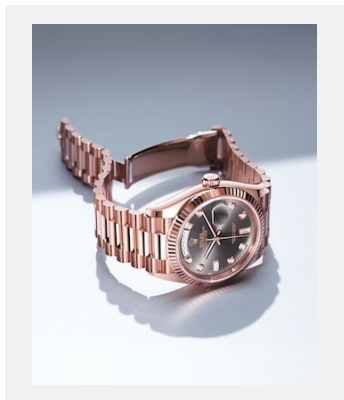


Réf.: m128235-0037\_2206jva\_003

Oyster Perpetual Day-Date 36

Crédits photo: ©Rolex/JVA Studios

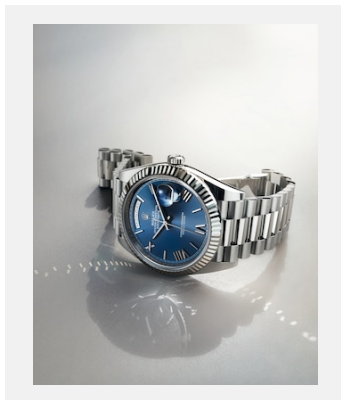
Planche-contact  
**DAY-DATE**



Réf.: m128235\_0050\_2402jva\_0002

Oyster Perpetual Day-Date 36

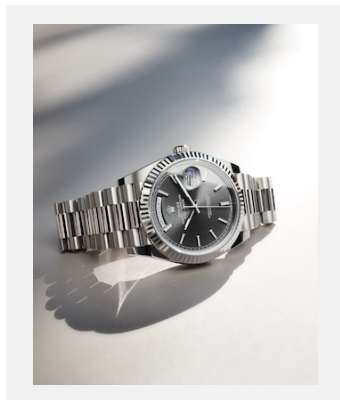
Crédits photo: ©Rolex/JVA Studios



Réf.: m228239-0007\_2106jva\_001

Oyster Perpetual Day-Date 40

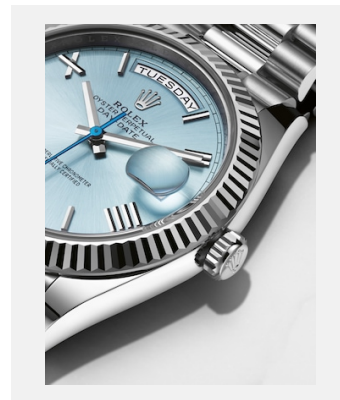
Crédits photo: ©Rolex/JVA Studios



Réf.: m228239-0060\_2106jva\_001

Oyster Perpetual Day-Date 40

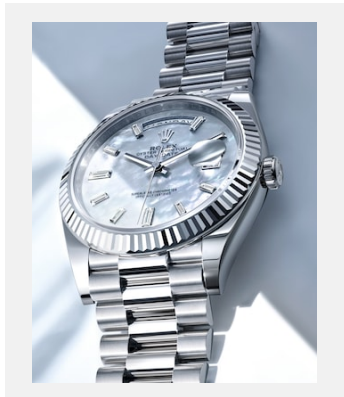
Crédits photo: ©Rolex/JVA Studios



Réf.: m228236-0012\_001\_2201rg\_03

Oyster Perpetual Day-Date 40, platine 950, cadran bleu glacier avec chiffres romains déliés facettés et index facettés.

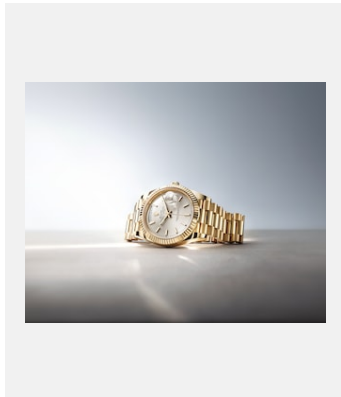
Crédits photo: ©Rolex/Régis Golay



Réf.: m228239-0078\_2405jva\_0002

Oyster Perpetual Day-Date 40

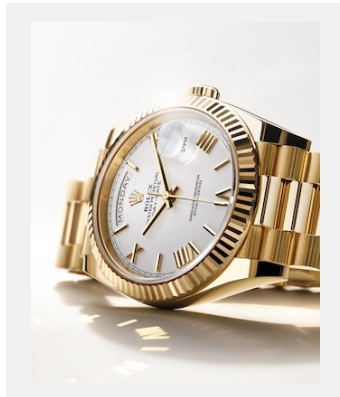
Crédits photo: ©Rolex/JVA Studios



Réf.: m228238-0066\_2401jva\_001

Oyster Perpetual Day-Date 40

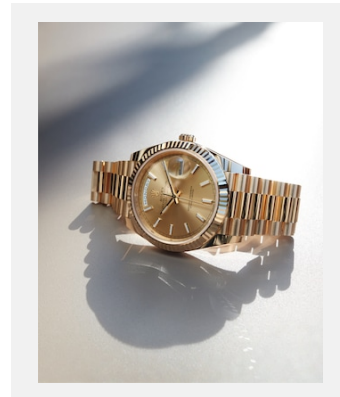
Crédits photo: ©Rolex/JVA Studios



Réf.: m228238-0042\_2304jva\_001\_v2\_c

Oyster Perpetual Day-Date 40

Crédits photo: ©Rolex/JVA Studios



Réf.: m228238-0003\_2106jva\_001

Oyster Perpetual Day-Date 40

Crédits photo: ©Rolex/JVA Studios

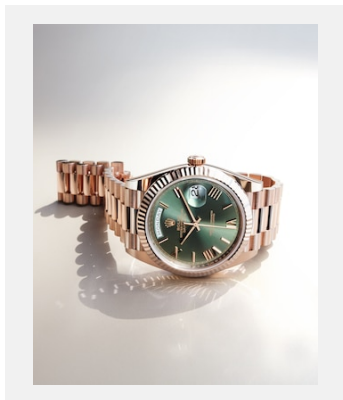
Planche-contact  
**DAY-DATE**



Réf.: m228238-0061\_2206jva\_002

Oyster Perpetual Day-Date 40

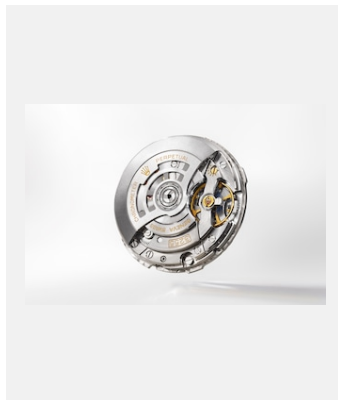
Crédits photo: ©Rolex/JVA Studios



Réf.: m228235-0025\_2106jva\_001

Oyster Perpetual Day-Date 40

Crédits photo: ©Rolex/JVA Studios

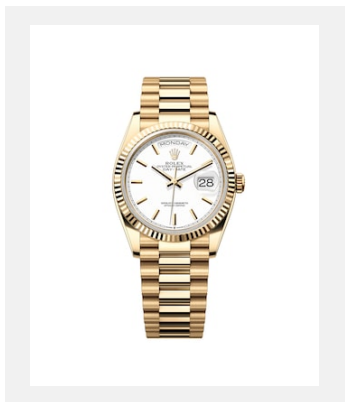


Réf.: movi3255\_a\_2210uf\_001\_recto

Calibre 3255

Crédits photo: ©Rolex/Ulysse Fréchetin

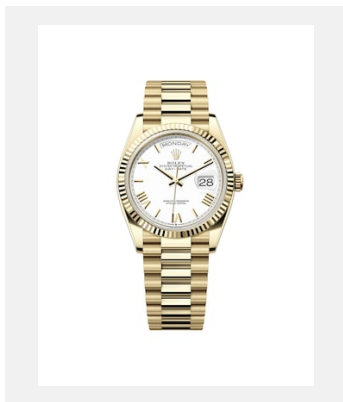
## VISUELS



Réf.: m128238-0081-

Day-Date 36

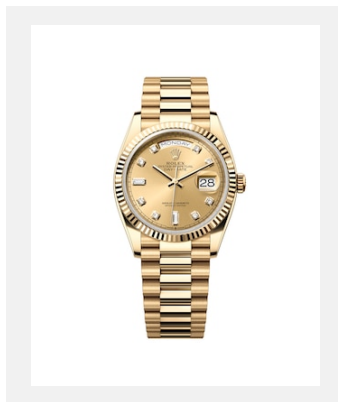
Crédits photo: © Rolex



Réf.: m128238-0113

Day-Date 36

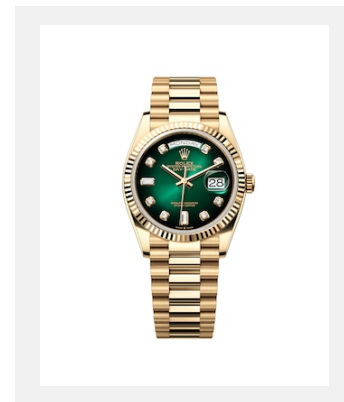
Crédits photo: © Rolex



Réf.: m128238-0008

Day-Date 36

Crédits photo: © Rolex

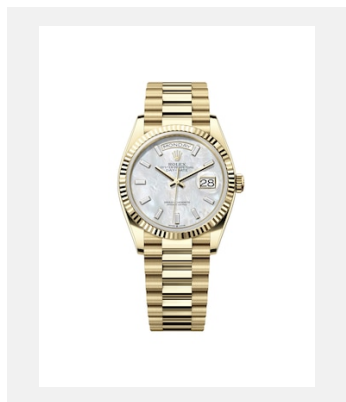


Réf.: m128238-0069

Day-Date 36

Crédits photo: © Rolex

Planche-contact  
**DAY-DATE**



Réf.: m128238-0123-

Day-Date 36

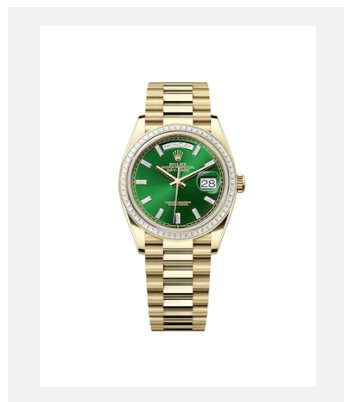
Crédits photo: © Rolex



Réf.: m128348rbr-0049

Day-Date 36

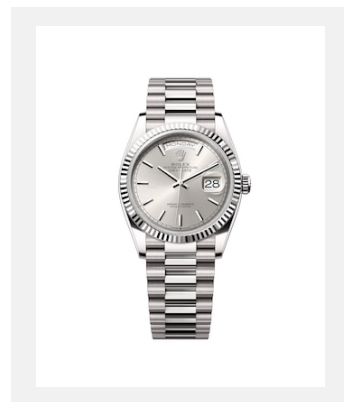
Crédits photo: © Rolex



Réf.: m128398tbr-0035-

Day-Date 36

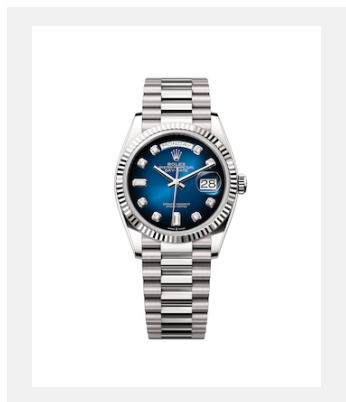
Crédits photo: © Rolex



Réf.: m128239-0005

Day-Date 36

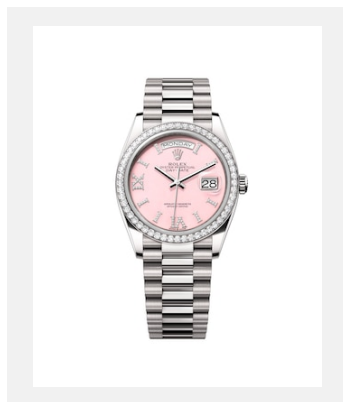
Crédits photo: © Rolex



Réf.: m128239-0023

Day-Date 36

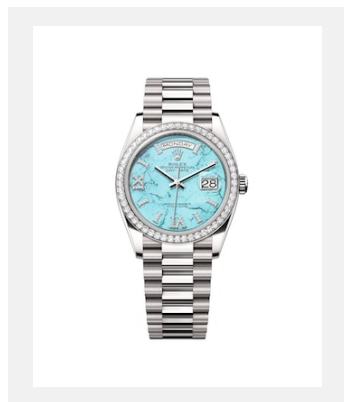
Crédits photo: © Rolex



Réf.: m128349rbr-0008

Day-Date 36

Crédits photo: © Rolex



Réf.: m128349rbr-0031

Day-Date 36

Crédits photo: © Rolex

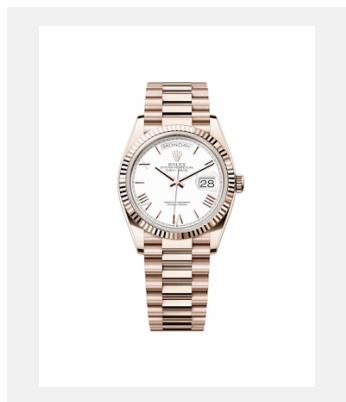


Réf.: m128399tbr-0029-

Day-Date 36

Crédits photo: © Rolex

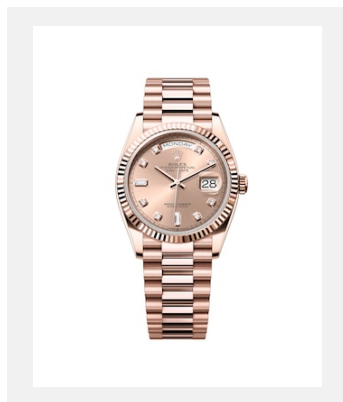
Planche-contact  
**DAY-DATE**



Réf.: m128235-0070-

Day-Date 36

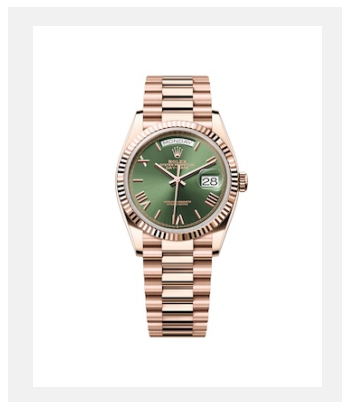
Crédits photo: © Rolex



Réf.: m128235-0009

Day-Date 36

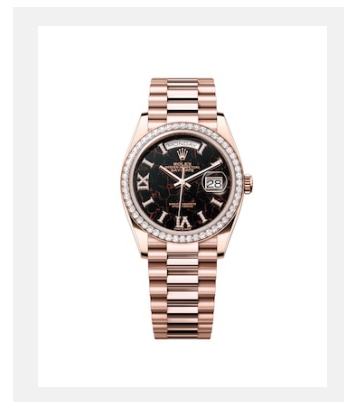
Crédits photo: © Rolex



Réf.: m128235-0089

Day-Date 36

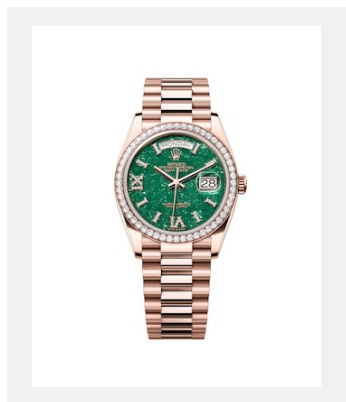
Crédits photo: © Rolex



Réf.: m128345rbr-0044

Day-Date 36

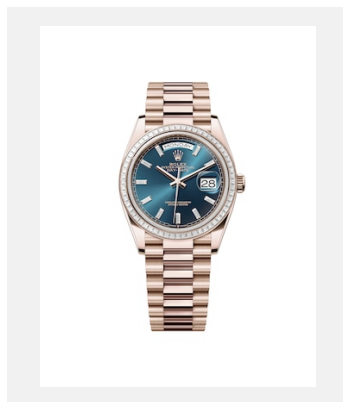
Crédits photo: © Rolex



Réf.: m128345rbr-0068

Day-Date 36

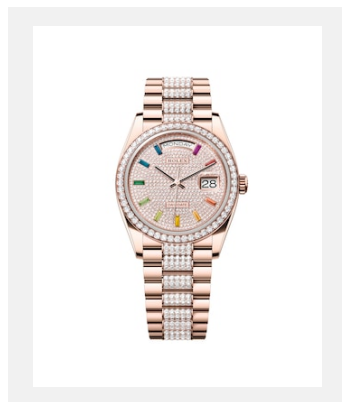
Crédits photo: © Rolex



Réf.: m128395tbr-0032-

Day-Date 36

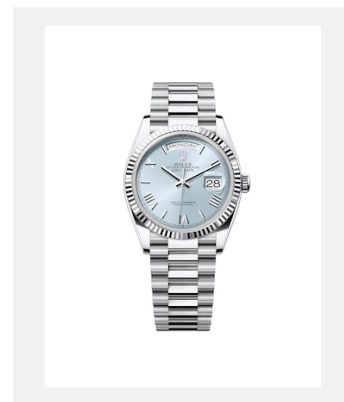
Crédits photo: © Rolex



Réf.: m128345rbr-0043

Day-Date 36

Crédits photo: © Rolex

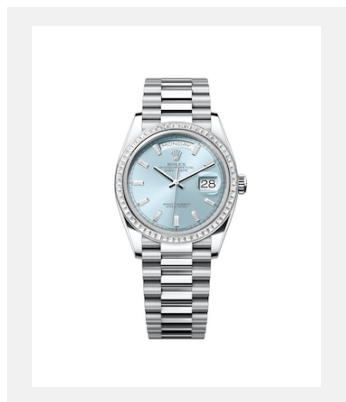


Réf.: m128236-0018-

Day-Date 36

Crédits photo: © Rolex

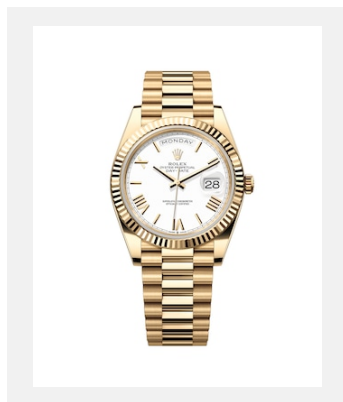
Planche-contact  
**DAY-DATE**



Réf.: m128396tbr-0003

Day-Date 36

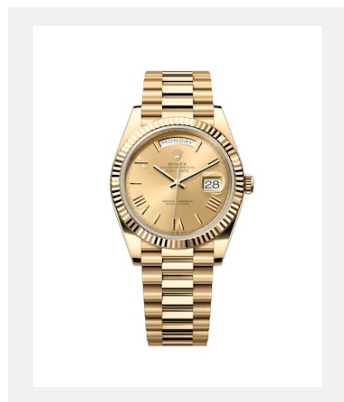
Crédits photo: © Rolex



Réf.: m228238-0042

Day-Date 40

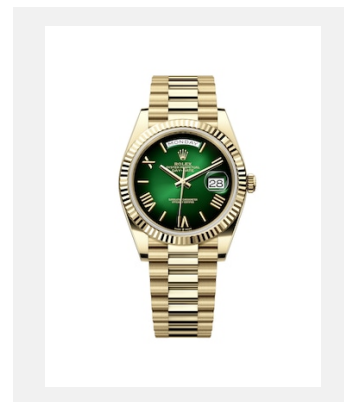
Crédits photo: © Rolex



Réf.: m228238-0006

Day-Date 40

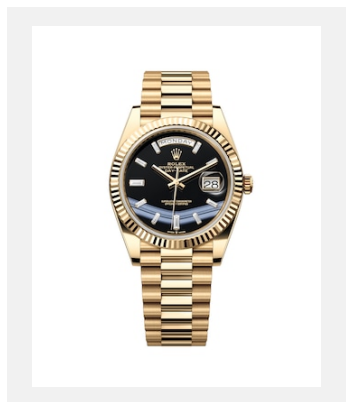
Crédits photo: © Rolex



Réf.: m228238-0069-

Day-Date 40

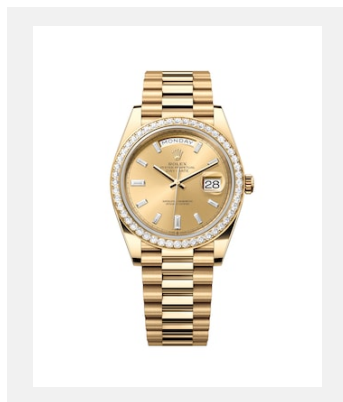
Crédits photo: © Rolex



Réf.: m228238-0059

Day-Date 40

Crédits photo: © Rolex



Réf.: m228348rbr-0002

Day-Date 40

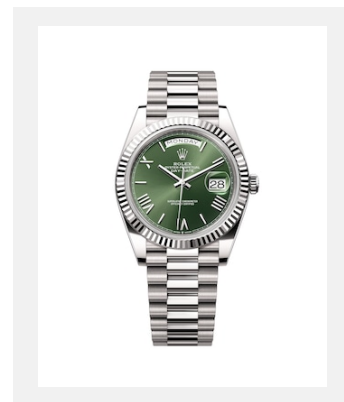
Crédits photo: © Rolex



Réf.: m228398tbr-0036

Day-Date 40

Crédits photo: © Rolex

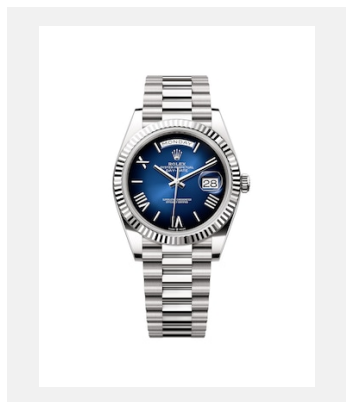


Réf.: m228239-0033

Day-Date 40

Crédits photo: © Rolex

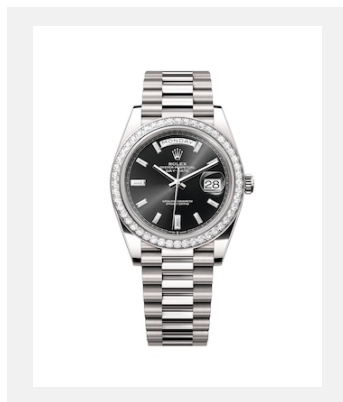
Planche-contact  
**DAY-DATE**



Réf.: m228239-0076-

Day-Date 40

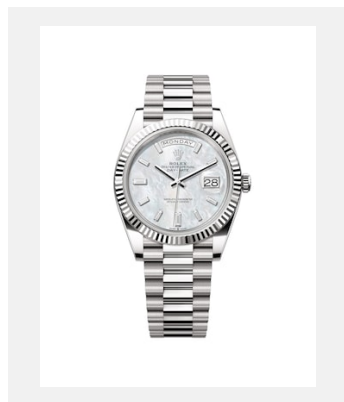
Crédits photo: © Rolex



Réf.: m228349rbr-0003

Day-Date 40

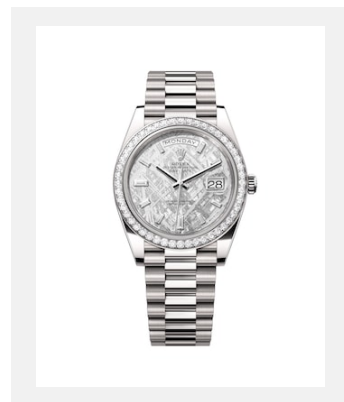
Crédits photo: © Rolex



Réf.: m228239-0078

Day-Date 40

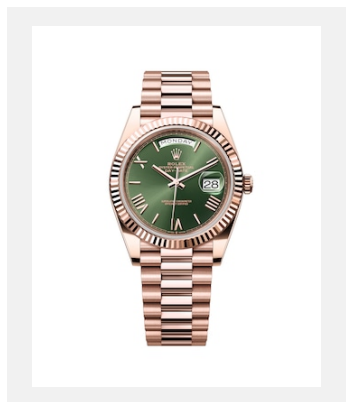
Crédits photo: © Rolex



Réf.: m228349rbr-0040

Day-Date 40

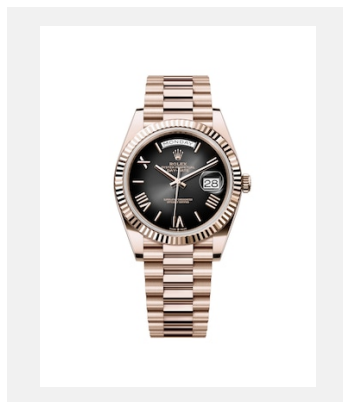
Crédits photo: © Rolex



Réf.: m228235-0025

Day-Date 40

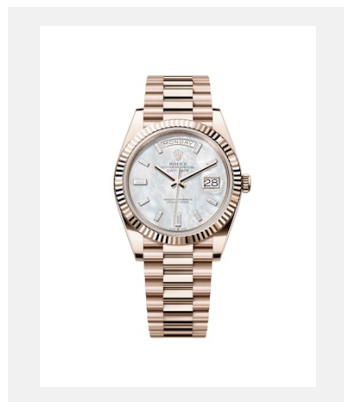
Crédits photo: © Rolex



Réf.: m228235-0055-

Day-Date 40

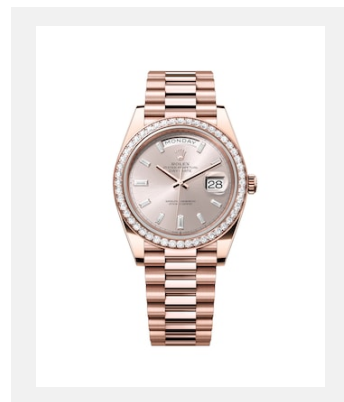
Crédits photo: © Rolex



Réf.: m228235-0056-

Day-Date 40

Crédits photo: © Rolex

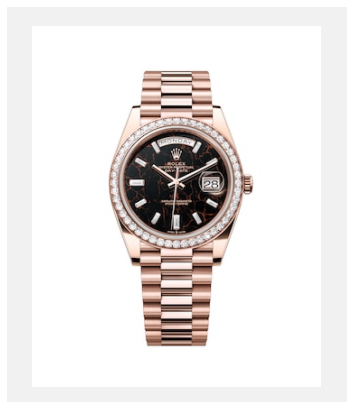


Réf.: m228345rbr-0007

Day-Date 40

Crédits photo: © Rolex

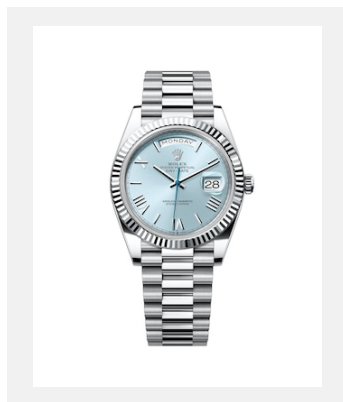
Planche-contact  
**DAY-DATE**



Réf.: m228345rbr-0016

Day-Date 40

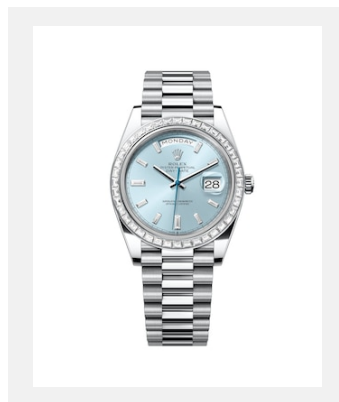
Crédits photo: © Rolex



Réf.: m228236-0012

Day-Date 40

Crédits photo: © Rolex



Réf.: m228396tbr-0002

Day-Date 40

Crédits photo: © Rolex

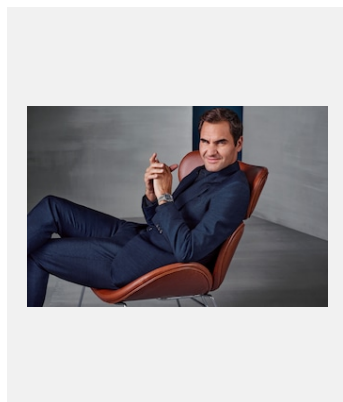
## UNE ALLIÉE PRÉCIEUSE



Réf.: rtr30kf6\_r

Jack Nicklaus, six fois champion des Masters, donne l'accolade au quadruple champion des Masters Arnold Palmer (à gauche) et au triple champion des Masters Gary Player (à droite) après que les trois ont terminé le premier tour du Masters 2000 à Augusta National.

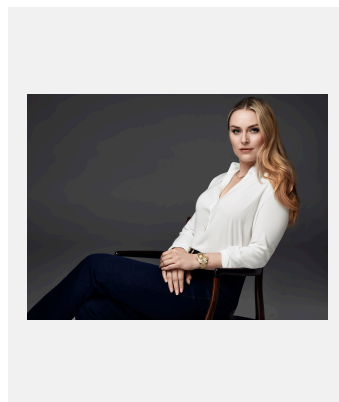
Crédits photo: ©REUTERS/Kevin Lamarque



Réf.: rfederer21aa\_018

Témoignage Rolex, Roger Federer avec une Oyster Perpetual Day-Date 40.

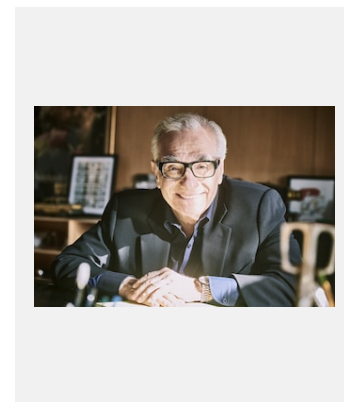
Crédits photo: ©Rolex/Anoush Abrar



Réf.: lvonn\_16tl\_0730-1

Témoignage Rolex, Lindsey Vonn. Elle porte sa montre personnelle l'Oyster Perpetual Day-Date II.

Crédits photo: ©Rolex/Thomas Laisné



Réf.: mscorsese\_18mb\_018r2

Témoignage Rolex, Martin Scorsese avec une Oyster Perpetual Day-Date 40.

Crédits photo: ©Rolex/Matthew Brookes