

Planche-contact

MAXI YACHT ROLEX CUP

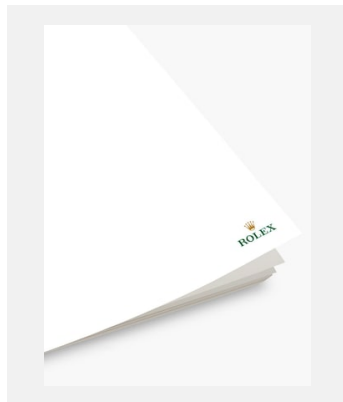
DOCUMENTS



Réf.: rolex-media-brochure_empty

Maxi Yacht Rolex Cup : excellence et évolution

Crédits photo: © Rolex

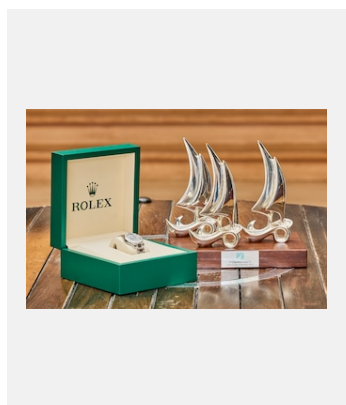


Réf.: rolex-media-brochure_empty

Maxi Yacht Rolex Cup : des performances exceptionnelles

Crédits photo: © Rolex

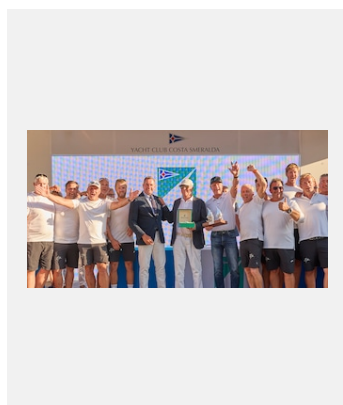
VISUELS



Réf.: maxi23cb_09010051

MAXI CLASS A WINNER PRIZES AT THE 2023 MAXI YACHT ROLEX CUP

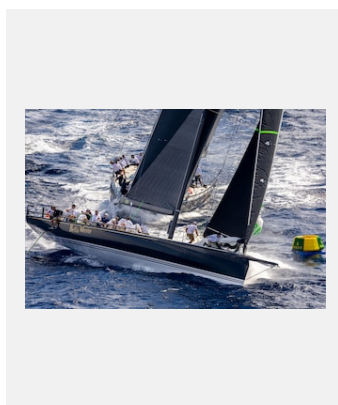
Crédits photo: © Rolex/Carlo Borlenghi



Réf.: maxi23cb_09020121

CLAUS-PETER OFFEN AND THE CREW OF Y3K, WINNERS OF THE SUPERMAXI CLASS AT THE MAXI YACHT ROLEX CUP 2023 PRIZE GIVING CEREMONY

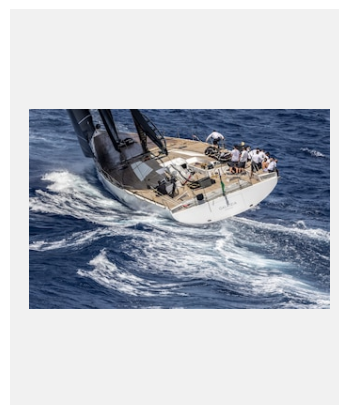
Crédits photo: © Rolex/Carlo Borlenghi



Réf.: maxi23cb_04020345

BELLA MENTE, OVERALL WINNER OF MAXI CLASS B AT THE 2023 MAXI YACHT ROLEX CUP

Crédits photo: © Rolex/Carlo Borlenghi



Réf.: maxi23cb_04021812

GALATEIA, OVERALL WINNER OF MAXI CLASS A AT THE 2023 MAXI YACHT ROLEX CUP

Crédits photo: © Rolex/Carlo Borlenghi

Planche-contact

MAXI YACHT ROLEX CUP



Réf.: maxi23cb_05064083

SVEA, OVERALL WINNER OF THE J CLASS AT THE 2023 MAXI YACHT ROLEX CUP

Crédits photo: © Rolex/Carlo Borlenghi



Réf.: maxi23cb_06011920

SPIRIT OF LORINA, OVERALL WINNER OF MAXI CLASS C AT THE 2023 MAXI YACHT ROLEX CUP

Crédits photo: © Rolex/Carlo Borlenghi



Réf.: maxi23cb_08010134

CLOSE PROXIMITY TO NATURE AND WILDLIFE IS A FEATURE OF RACING AT THE MAXI YACHT ROLEX CUP

Crédits photo: © Rolex/Carlo Borlenghi



Réf.: maxi23cb_08020048

THE EMERALD WATERS AND ROCKY OUTCROPS OF THE COSTA SMERALDA FORM PART OF A SPECTACULAR SAILING ENVIRONMENT

Crédits photo: © Rolex/Carlo Borlenghi



Réf.: maxi23cb_06010062

CLOSE AND INTENSE COMPETITION IS ONE OF THE DEFINING FEATURES OF THE MAXI YACHT ROLEX CUP

Crédits photo: © Rolex/Carlo Borlenghi



Réf.: maxi23cb_06010333

ON SHORT AND COMPRESSED COURSES, THE FLEET ARE ALWAYS IN CLOSE COMPETITION AT THE MAXI YACHT ROLEX CUP

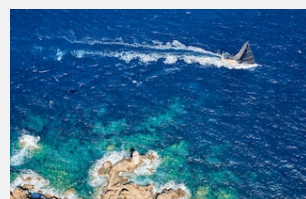
Crédits photo: © Rolex/Carlo Borlenghi



Réf.: maxi23cb_06010551

THE 2023 MAXI YACHT ROLEX CUP WELCOMED A FLEET OF 48 YACHTS DIVIDED INTO SIX DIFFERENT CLASSES

Crédits photo: © Rolex/Carlo Borlenghi



Réf.: maxi23cb_06020235

THE EMERALD WATERS OF SARDINIA'S COSTA SMERALDA FORM AN INTEGRAL PART OF THE MAXI YACHT ROLEX CUP'S ENVIABLE NAUTICAL ENVIRONMENT

Crédits photo: © Rolex/Carlo Borlenghi

Planche-contact

MAXI YACHT ROLEX CUP



Réf.: maxi23cb_06020255

THE MAXI YACHT ROLEX CUP FLEET NAVIGATE THROUGH PASSO DELLE BISCE

Crédits photo: © Rolex/Carlo Borlenghi



Réf.: maxi23cb_06060634a

THE EIGHT-STRONG MAXI B CLASS DEMONSTRATING THE CLOSE NATURE OF MAXI YACHT ROLEX CUP RACING

Crédits photo: © Rolex/Carlo Borlenghi



Réf.: maxi23cb_06060962

HANDLING POWERFUL MAXI YACHTS AT SPEED REQUIRES EXCEPTIONAL SAILING SKILL AND TEAMWORK

Crédits photo: © Rolex/Carlo Borlenghi



Réf.: maxi23cb_05020294

THE ROCKS AND ISLETS OF THE MADDALENA ARCHIPELAGO FORM NATURAL COURSE MARKS DURING RACING AT THE MAXI YACHT ROLEX CUP

Crédits photo: © Rolex/Carlo Borlenghi



Réf.: maxi23cb_05010273

THE MAXI A CLASS POWERS THROUGH THE BIG SEA ON THE SECOND DAY OF THE MAXI YACHT ROLEX CUP 2023

Crédits photo: © Rolex/Carlo Borlenghi



Réf.: maxi23cb_05010717

EVEN ON A MAXI YACHT THE CREW MUST OPTIMIZE WEIGHT DISTRIBUTION TO ACHIEVE THE BEST PERFORMANCE

Crédits photo: © Rolex/Carlo Borlenghi



Réf.: maxi23cb_05012455

THE PASSO DELLE BISCE IS THE NARROW SOUTHERNMOST ENTRANCE TO THE MADDALENA ARCHIPELAGO

Crédits photo: © Rolex/Carlo Borlenghi



Réf.: maxi23cb_05012842

MAXI MULTIHULLS ARE PARTICIPATING FOR THE FIRST TIME AT THE MAXI YACHT ROLEX CUP

Crédits photo: © Rolex/Carlo Borlenghi

Planche-contact

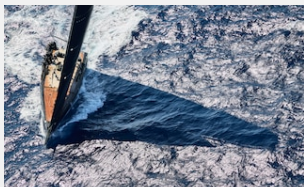
MAXI YACHT ROLEX CUP



Réf.: maxi23cb_05060549

POWERING UPWIND DURING THE 33RD MAXI YACHT ROLEX CUP

Crédits photo: © Rolex/Carlo Borlenghi



Réf.: maxi23cb_05010054

THE MAXI YACHT ROLEX CUP FEATURES SIX CLASSES OF YACHTS

Crédits photo: © Rolex/Carlo Borlenghi



Réf.: maxi23cb_05010230

EVEN ON A 100 FOOT (30.5 METRE) MAXI IT CAN BE A WET AND WILD RIDE IN A BIG SEA OFF PORTO CERVO

Crédits photo: © Rolex/Carlo Borlenghi



Réf.: maxi23cb_05010415

THE J CLASS REPRESENT THE VERY PINNACLE OF ELEGANCE AND TRADITION AT THE MAXI YACHT ROLEX CUP

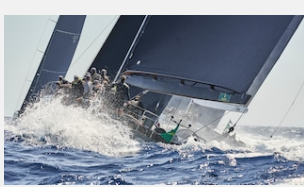
Crédits photo: © Rolex/Carlo Borlenghi



Réf.: maxi23cb_05020108

THE COSTA SMERALDA AND MADDALENA ARCHIPELAGO PROVIDE A STUNNING RACING ENVIRONMENT

Crédits photo: © Rolex/Carlo Borlenghi



Réf.: maxi23cb_05060505

THE MAXI FLEET BEATS UPWIND IN BIG WAVES DURING THE MAXI YACHT ROLEX CUP

Crédits photo: © Rolex/Carlo Borlenghi



Réf.: maxi23cb_05060980

APPROACHING THE WINDWARD MARK ON A SUPERMAXI DURING THE 33RD MAXI YACHT ROLX CUP

Crédits photo: © Rolex/Carlo Borlenghi



Réf.: maxi23cb_04020264

THE COSTA SMERALDA PROVIDES AN EXCEPTIONAL BACKDROP FOR THE MAXI YACHT ROLEX CUP

Crédits photo: © Rolex/Carlo Borlenghi

Planche-contact

MAXI YACHT ROLEX CUP



Réf.: maxi23cb_04062619

**MAXI YACHT ROLEX CUP RACING
TAKES PLACE AGAINST THE
SCENIC BACKDROP OF THE
COSTA SMERALDA**

Crédits photo: © Rolex/Carlo
Borlenghi



Réf.: maxi23cb_04062634

**THE SUPERMAXI CLASS
FEATURES YACHTS OVER 100
FOOT (30.5 METRES) IN LENGTH**

Crédits photo: © Rolex/Carlo
Borlenghi



Réf.: maxi23cb_03030097

**MAXI YACHT ROLEX CUP FLEET
GATHERS IN PORTO CERVO FOR
THE 33RD EDITION**

Crédits photo: © Rolex/Carlo
Borlenghi



Réf.: maxi23cb_03030198

**2023 MAXI YACHT ROLEX CUP
FLEET IN FRONT THE YACHT CLUB
COSTA SMERALDA**

Crédits photo: © Rolex/Carlo
Borlenghi