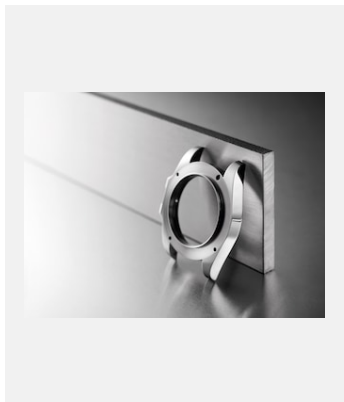


Kontaktabzug
MATERIAL

EDELSTAHL OYSTERSTEEL



Ref.: acier-904l_carrure

Oyster Mittelteil in Edelstahl
Oystersteel

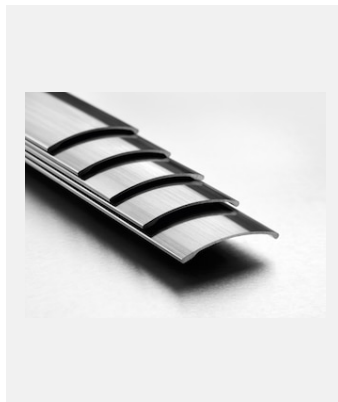
Foto: ©Rolex/Cédric Widmer



Ref.: acier-904l_barres

Rohre aus Edelstahl Oystersteel

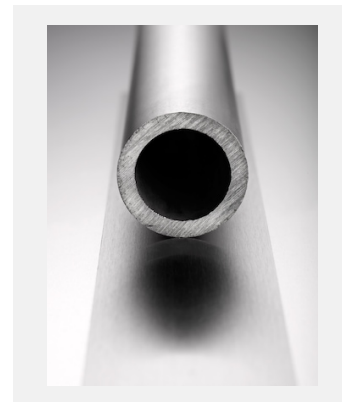
Foto: ©Rolex/Cédric Widmer



Ref.: acier-904l_profiles

Geformte Profile aus Edelstahl
Oystersteel

Foto: ©Rolex/Cédric Widmer



Ref.: acier-904l_tube

Geformte Profile aus Edelstahl
Oystersteel

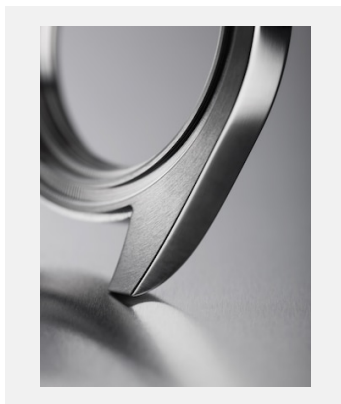
Foto: ©Rolex/Cédric Widmer



Ref.: mat-steel_0012

Oyster Mittelteil in Edelstahl
Oystersteel

Foto: ©Rolex/Cédric Widmer



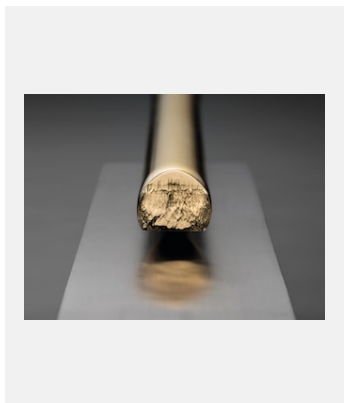
Ref.: mat-steel_0014

Oyster Mittelteil in Edelstahl
Oystersteel

Foto: ©Rolex/Cédric Widmer

Kontaktabzug
MATERIAL

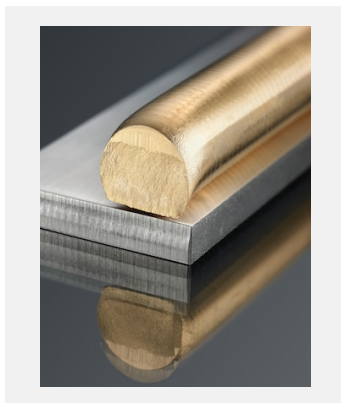
ROLESOR



Ref.: elmt_1510cw_007

Rolesor

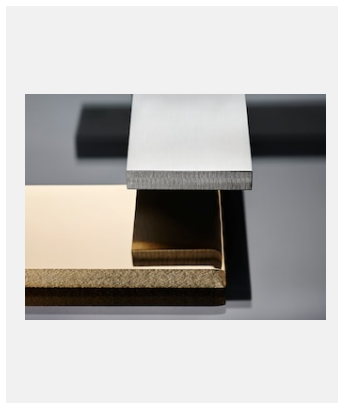
Foto: ©Rolex/Widmer Cédric



Ref.: elmt_1501cw_001

Rolesor

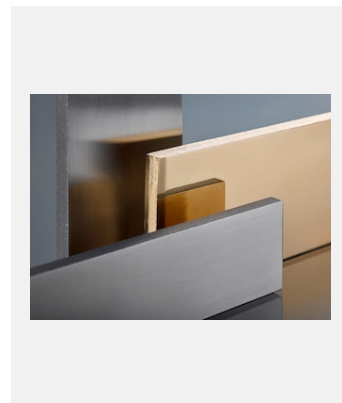
Foto: ©Rolex/Widmer Cédric



Ref.: elmt_1501cw_004

Rolesor

Foto: ©Rolex/Widmer Cédric

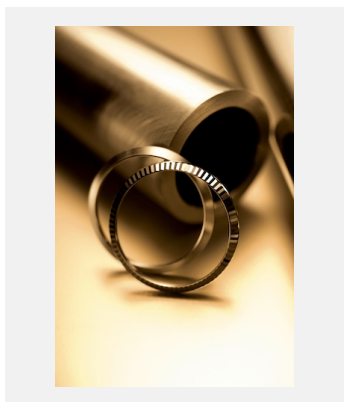


Ref.: elmt_1501cw_006

Rolesor

Foto: ©Rolex/Widmer Cédric

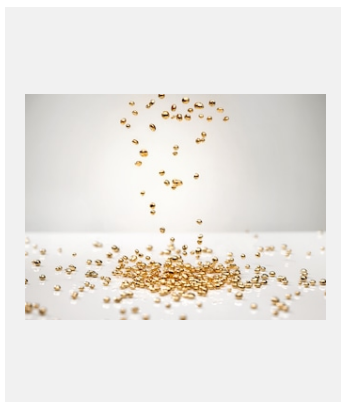
GELBGOLD



Ref.: rolex_tiges_lunettes_oj_q

18 Karat Gelbgold

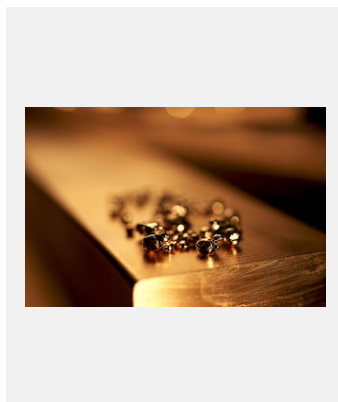
Foto: ©Rolex/Jean-Daniel Meyer



Ref.: elmt_1605jva_002-new

Körner aus 18 Karat Gelbgold

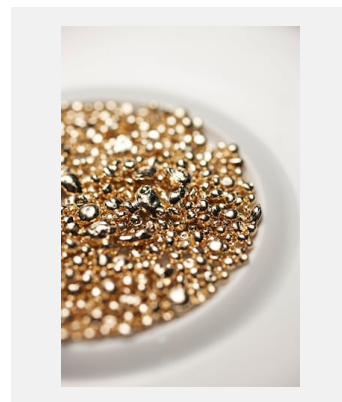
Foto: ©Rolex/Joël von Allmen



Ref.: plofonteapprtage10jdm064

18 Karat Gelbgold

Foto: ©Rolex/Jean-Daniel Meyer



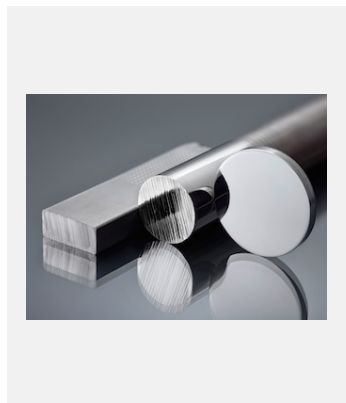
Ref.: plofonteapprtage10jdm060

18 Karat Gelbgold

Foto: ©Rolex/Jean-Daniel Meyer

Kontaktabzug
MATERIAL

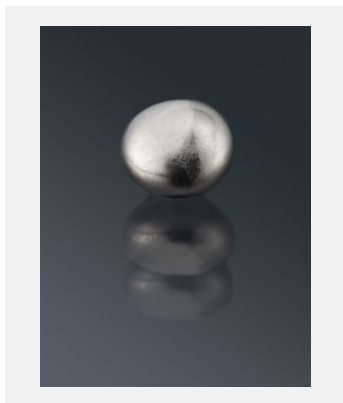
WEISSGOLD



Ref.: elmt1506cw_001

18 Karat Weißgold

Foto: ©Rolex/Cédric Widmer



Ref.: elmt1506cw_002

18 Karat Weißgold

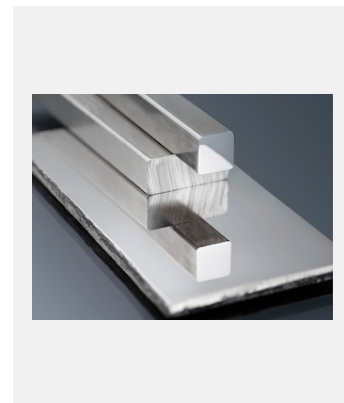
Foto: ©Rolex/Cédric Widmer



Ref.: elmt1506cw_004

18 Karat Weißgold

Foto: ©Rolex/Cédric Widmer

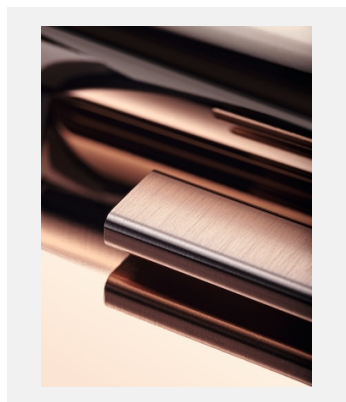


Ref.: elmt1506cw_005

18 Karat Weißgold

Foto: ©Rolex/Cédric Widmer

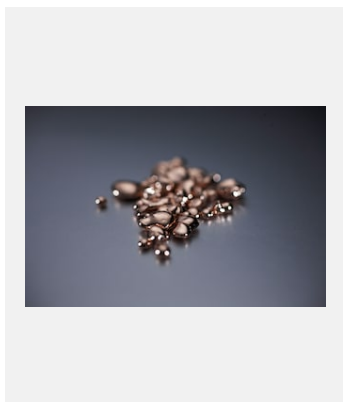
EVEROSE-GOLD



Ref.: elmt_1705cw_003

18 Karat Everose-Gold

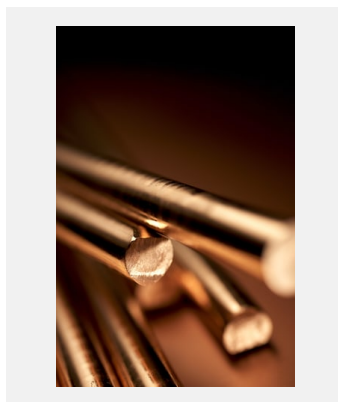
Foto: ©Rolex/Cédric Widmer



Ref.: plofonteapprtage10jdm055

18 Karat Everose-Gold

Foto: ©Rolex/Jean-Daniel Meyer



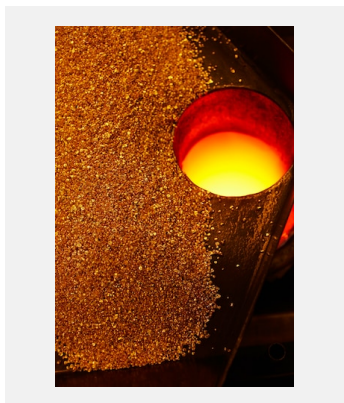
Ref.: plofonteapprtage10jdm069

18 Karat Everose-Gold

Foto: ©Rolex/Jean-Daniel Meyer

Kontaktabzug
MATERIAL

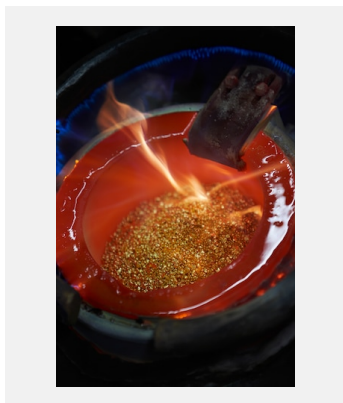
GIESSEREI



Ref.: plo_fonte_apprtage_10jdm_030

Gießerei

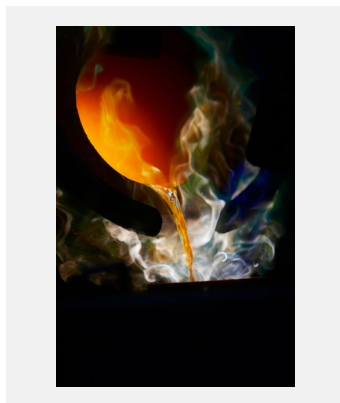
Foto: ©Rolex/Jean-Daniel Meyer



Ref.: plo_fonte_apprtage_10jdm_014

Gießerei

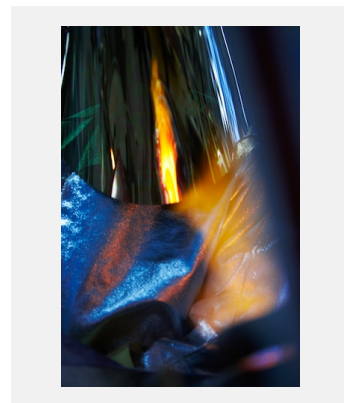
Foto: ©Rolex/Jean-Daniel Meyer



Ref.: plo_fonte_apprtage_10jdm_022

Gießerei

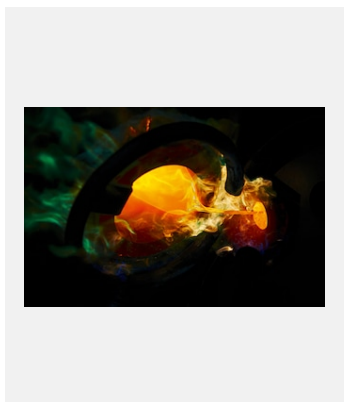
Foto: ©Rolex/Jean-Daniel Meyer



Ref.: plo_fonte_apprtage_10jdm_016

Gießerei

Foto: ©Rolex/Jean-Daniel Meyer



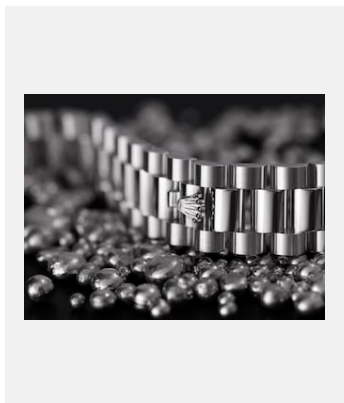
Ref.: rolex_fonte_or

Gießerei

Foto: ©Rolex/Jean-Daniel Meyer

Kontaktabzug
MATERIAL

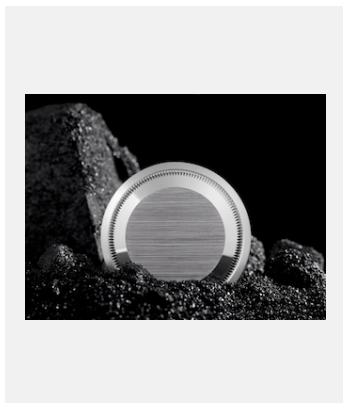
PLATIN 950



Ref.: mat-plat_0017

Platin 950

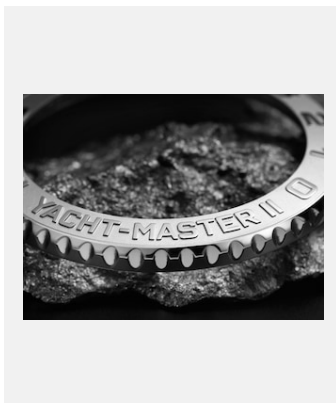
Foto: ©Rolex/Cédric Widmer



Ref.: mat-plat_0026

Platin 950

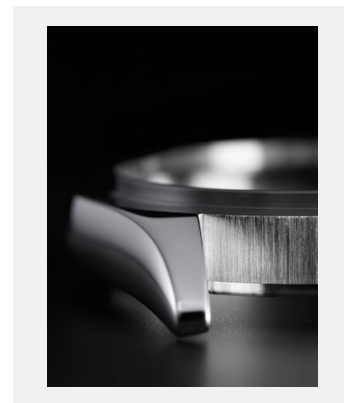
Foto: ©Rolex/Cédric Widmer



Ref.: mat-plat_0014

Platin 950

Foto: ©Rolex/Cédric Widmer



Ref.: mat-plat_0019

Platin 950

Foto: ©Rolex/Cédric Widmer



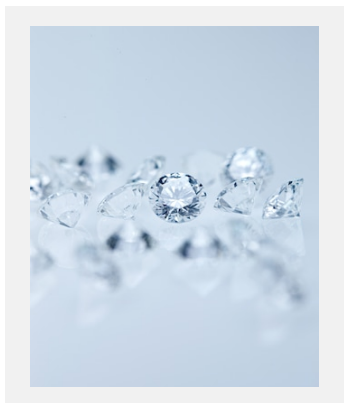
Ref.: platine_couronne

Platin 950

Foto: ©Rolex/Cédric Widmer

Kontaktabzug
MATERIAL

EDELSTEINE UND EDELSTEINFASSUNG



Ref.: elmt_1412jdm_009

Edelsteine

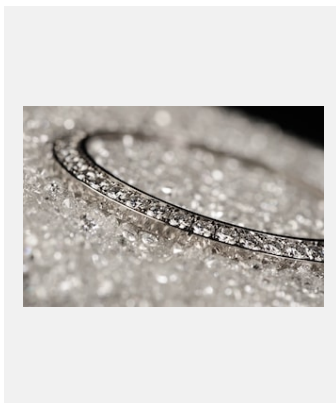
Foto: © Rolex/Jean-Daniel Meyer



Ref.: m278289rbr-0008_1806jva_pk_002

Pavé-Zifferblatt, 262 Diamanten, mit
Perlmutt-Schmetterlingsmotiv

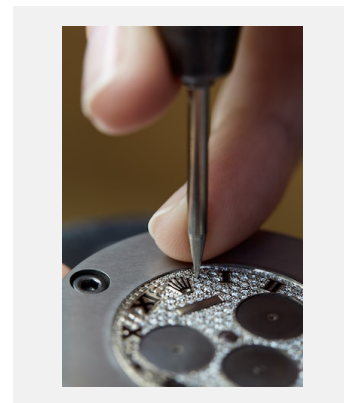
Foto: ©Joel von Allmen



Ref.: diamant-02

Diamantlunette

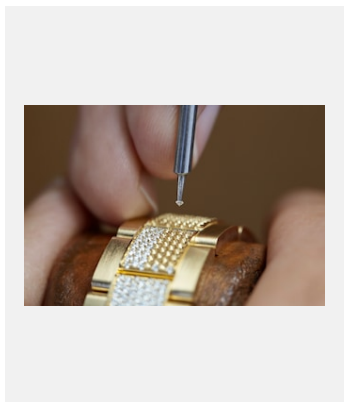
Foto: ©Rolex/Thierry Parel



Ref.: sertissage_14cw_009

Setzen der Edelsteine auf einem
Zifferblatt

Foto: ©Rolex/Cédric Widmer



Ref.: sertissage_14cw_118

Setzen der Edelsteine auf einem
Armband

Foto: ©Rolex/Cédric Widmer