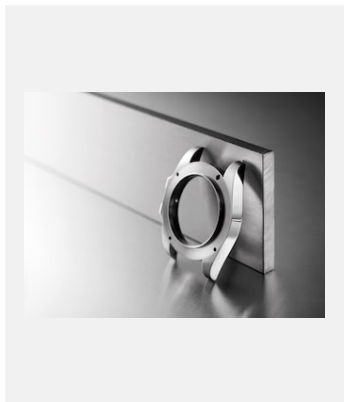


版權頁 材質

蠔式鋼



編碼: acier-904l_carrure

蠔式鋼蠔式中間錶殼

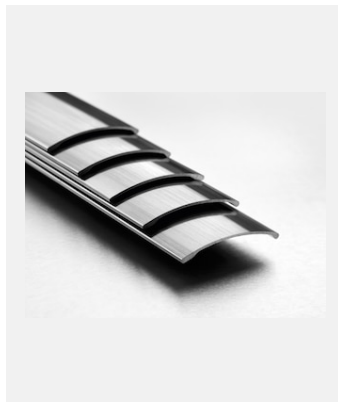
鳴謝: ©Rolex/Cédric Widmer



編碼: acier-904l_barres

蠔式鋼索

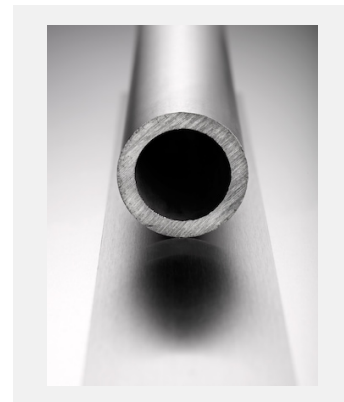
鳴謝: ©Rolex/Cédric Widmer



編碼: acier-904l_profiles

蠔式鋼片

鳴謝: ©Rolex/Cédric Widmer



編碼: acier-904l_tube

蠔式鋼片

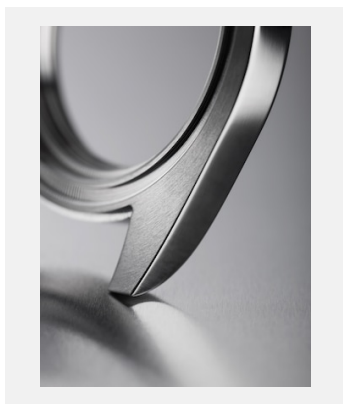
鳴謝: ©Rolex/Cédric Widmer



編碼: mat-steel_0012

蠔式鋼蠔式中間錶殼

鳴謝: ©Rolex/Cédric Widmer



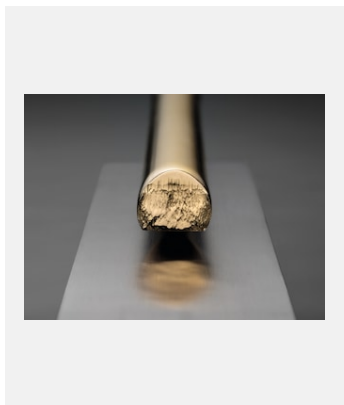
編碼: mat-steel_0014

蠔式鋼蠔式中間錶殼

鳴謝: ©Rolex/Cédric Widmer

版權頁
材質

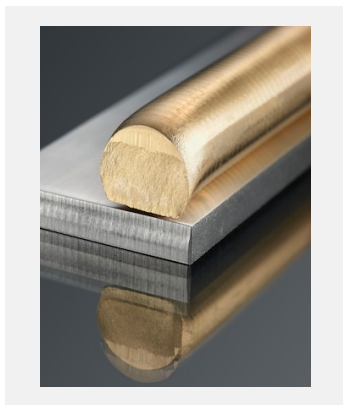
金鋼



編碼: elmt_1510cw_007

金鋼

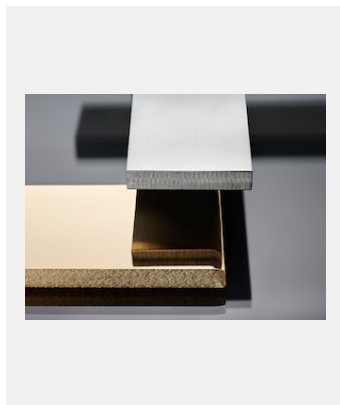
鳴謝: ©Rolex/Widmer Cédric



編碼: elmt_1501cw_001

金鋼

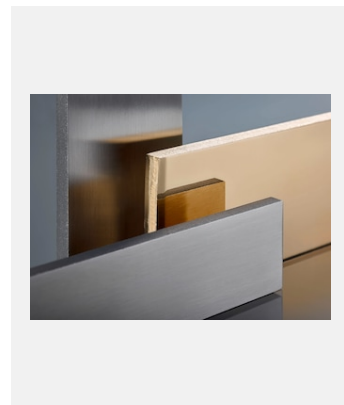
鳴謝: ©Rolex/Widmer Cédric



編碼: elmt_1501cw_004

金鋼

鳴謝: ©Rolex/Widmer Cédric

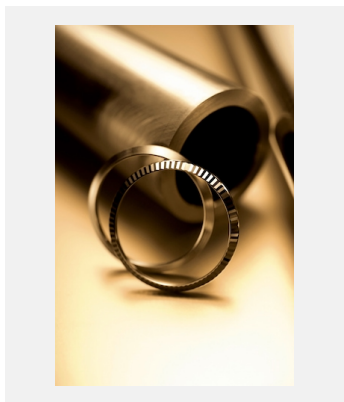


編碼: elmt_1501cw_006

金鋼

鳴謝: ©Rolex/Widmer Cédric

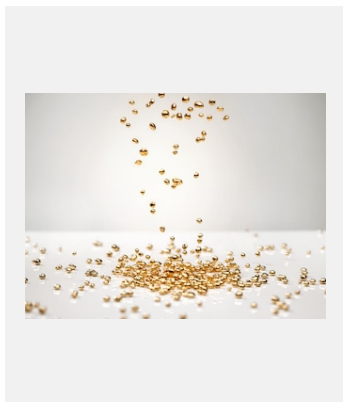
黃金



編碼: rolex_tiges_lunettes_oj_q

18K黃金

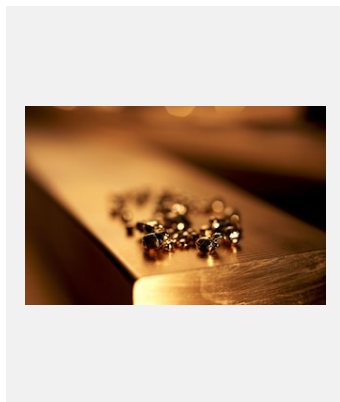
鳴謝: ©Rolex/Jean-Daniel Meyer



編碼: elmt_1605jva_002-new

18K黃金珠粒

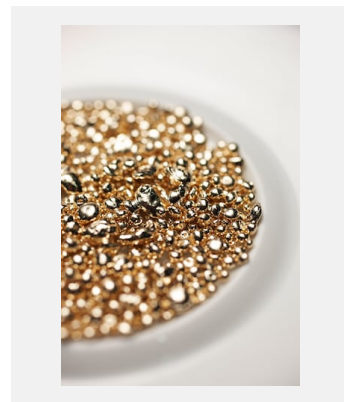
鳴謝: ©Rolex/Joël von Allmen



編碼: plofonteapprtage10jdm064

18K黃金

鳴謝: ©Rolex/Jean-Daniel Meyer



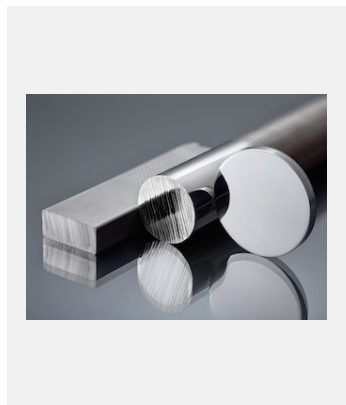
編碼: plofonteapprtage10jdm060

18K黃金

鳴謝: ©Rolex/Jean-Daniel Meyer

版權頁
材質

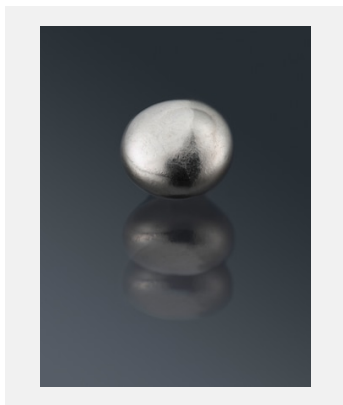
白色黃金



編碼: elmt1506cw_001

18K白色黃金

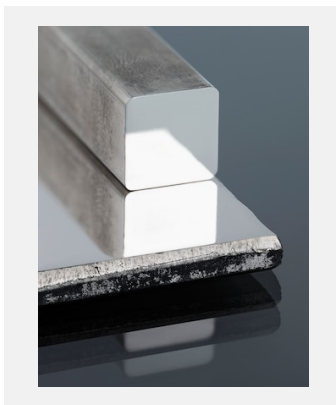
鳴謝: ©Rolex/Cédric Widmer



編碼: elmt1506cw_002

18K白色黃金

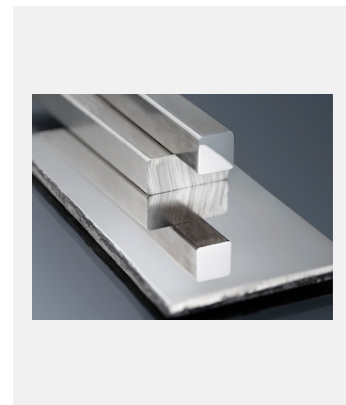
鳴謝: ©Rolex/Cédric Widmer



編碼: elmt1506cw_004

18K白色黃金

鳴謝: ©Rolex/Cédric Widmer

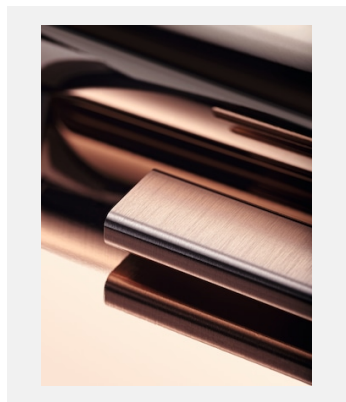


編碼: elmt1506cw_005

18K白色黃金

鳴謝: ©Rolex/Cédric Widmer

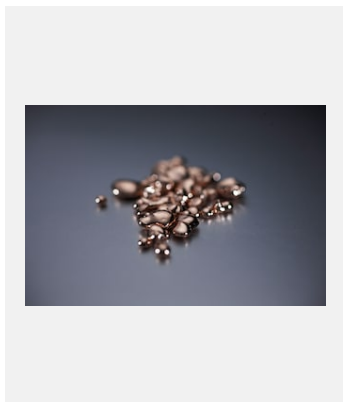
永恒玫瑰金



編碼: elmt_1705cw_003

18K永恒玫瑰金

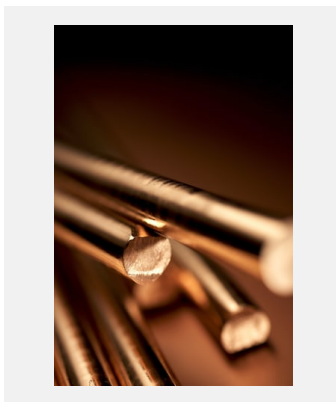
鳴謝: ©Rolex/Cédric Widmer



編碼: plofonteapprtage10jdm055

18K永恒玫瑰金

鳴謝: ©Rolex/Jean-Daniel Meyer



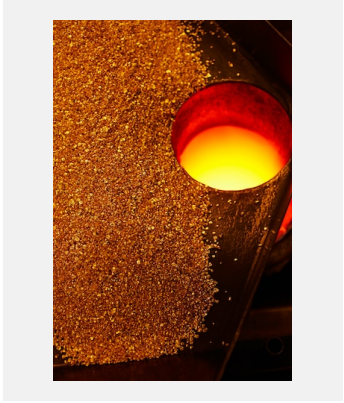
編碼: plofonteapprtage10jdm069

18K永恒玫瑰金

鳴謝: ©Rolex/Jean-Daniel Meyer

版權頁
材質

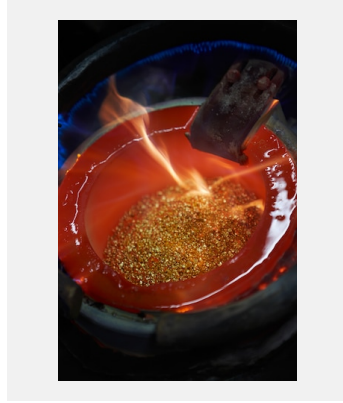
鑄造廠



編碼: plo_fonte_apprtage_10jdm_030

鑄造廠

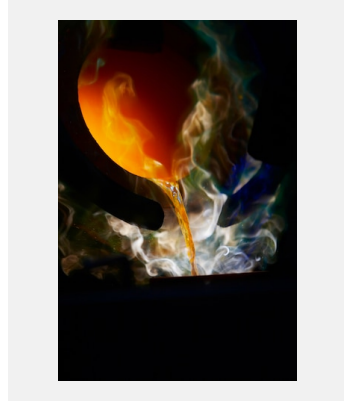
鳴謝: ©Rolex/Jean-Daniel Meyer



編碼: plo_fonte_apprtage_10jdm_014

鑄造廠

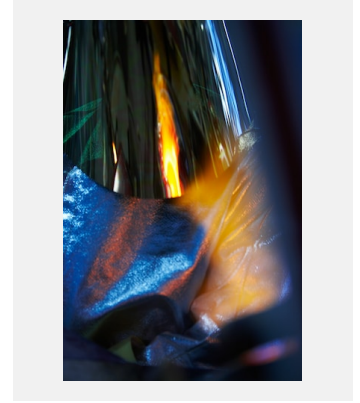
鳴謝: ©Rolex/Jean-Daniel Meyer



編碼: plo_fonte_apprtage_10jdm_022

鑄造廠

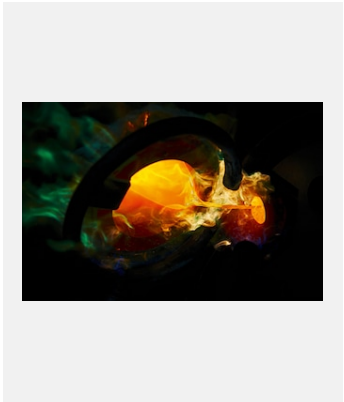
鳴謝: ©Rolex/Jean-Daniel Meyer



編碼: plo_fonte_apprtage_10jdm_016

鑄造廠

鳴謝: ©Rolex/Jean-Daniel Meyer



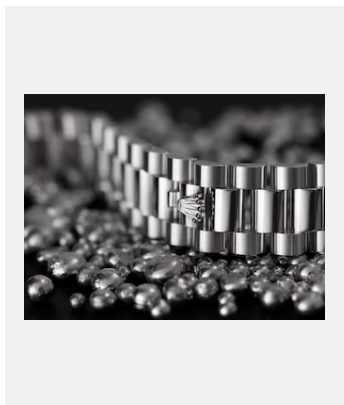
編碼: rolex_fonte_or

鑄造廠

鳴謝: ©Rolex/Jean-Daniel Meyer

版權頁 材質

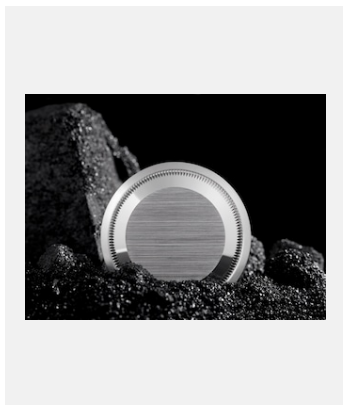
950 鉑金



編碼: mat-plat_0017

950 鉑金

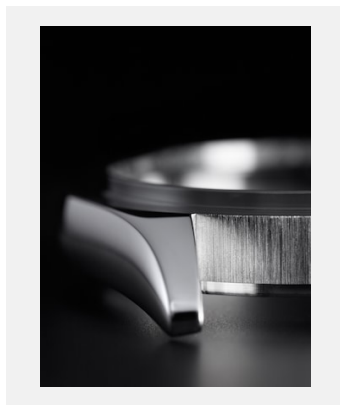
鳴謝: ©Rolex/Cédric Widmer



編碼: mat-plat_0026

950 鉑金

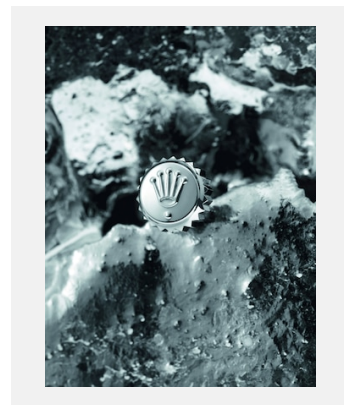
鳴謝: ©Rolex/Cédric Widmer



編碼: mat-plat_0019

950 鉑金

鳴謝: ©Rolex/Cédric Widmer

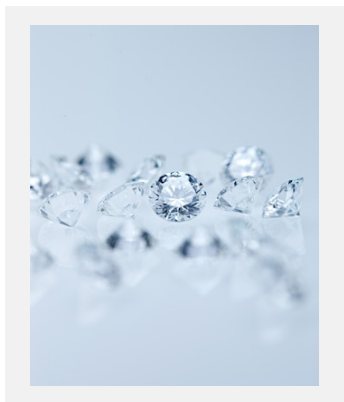


編碼: platine_couronne

950 鉑金

鳴謝: ©Rolex/Cédric Widmer

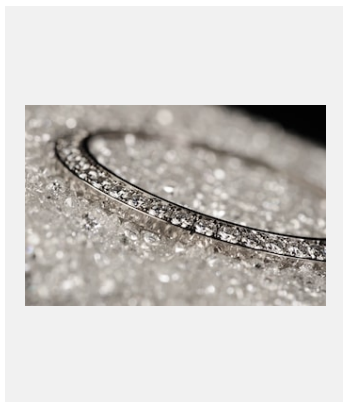
寶石與寶石鑲嵌



編碼: elmt_1412jdm_009

寶石

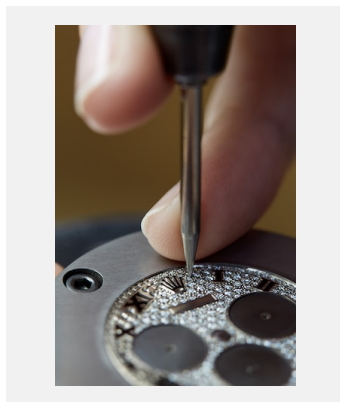
鳴謝: © Rolex/Jean-Daniel Meyer



編碼: diamant-02

鑲鑽外圈

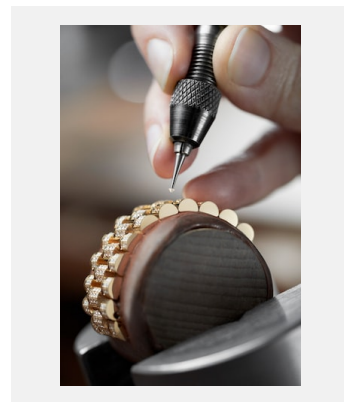
鳴謝: ©Rolex/Thierry Parel



編碼: sertissage_14cw_009

為錶面鑲鑽

鳴謝: ©Rolex/Cédric Widmer



編碼:
wmgemsetting_m279458rbr-0001_2102cw_0059

為Lady-Datejust錶帶鑲嵌鑽石。

鳴謝: ©Cédric Widmer;