

MOVEMENTS

PERPETUAL ROTOR

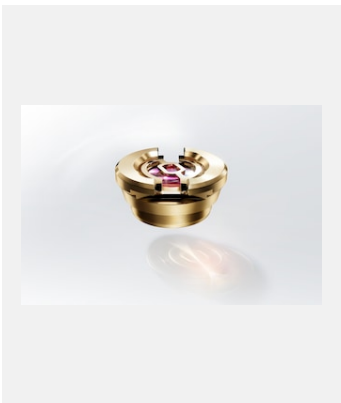


Ref: rotor_2301_003_spprint_rvb

Self-winding module via a Perpetual rotor, 32XX family

Credits: © Rolex/Stojan & Voumard

PARAFLEX



Ref: paraflex_2301_002b_rvb

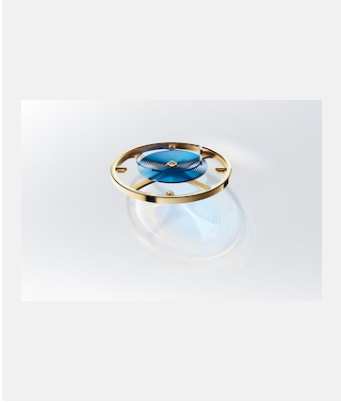
Paraflex shock absorber

Credits: © Rolex

Contact sheet

MOVEMENTS

PARACHROM HAIRSPRING

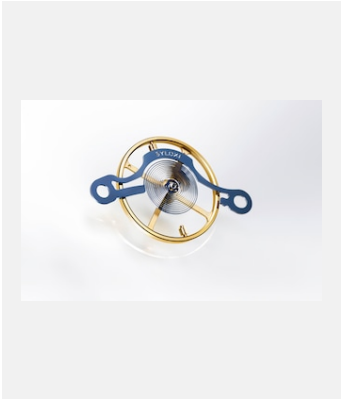


Ref: spiral_2301_004e_rvb

Blue Parachrom hairspring fitted on
the balance wheel

Credits: © Rolex

SYLOXI HAIRSPRING



Ref: syloxi_2303uf_001

Syloxi hairspring of calibre 7140

Credits: ©Rolex/Ulysse Frechelin

Contact sheet

MOVEMENTS

ESCAPEMENT



Ref: chronergy_2303uf_083

Chronergy escapement

Credits: ©Rolex/Ulysse Frechelin

BALANCE WHEEL



Ref: microstella_2303uf_001

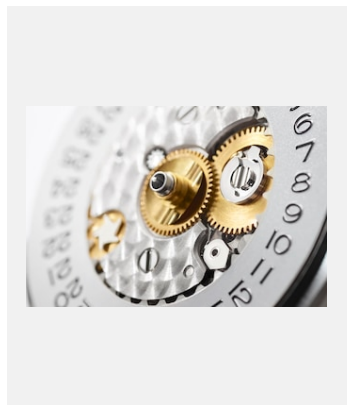
Balance wheel and Microstella nut

Credits: ©Rolex/Ulysse Frechelin

Contact sheet

MOVEMENTS

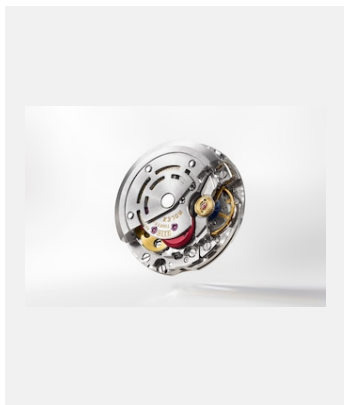
PERPETUAL MOVEMENTS



Ref: movt2236_2210uf_001_detail

Calibre 2236, close-up of the mechanism driving the date disc

Credits: © Rolex/Ulysse Frechelin



Ref: movt2236_2210uf_001_recto

Calibre 2236

Credits: © Rolex/Ulysse Frechelin



Ref: movt2236_2210uf_001_verso

Calibre 2236 – dial side

Credits: © Rolex/Ulysse Frechelin



Ref: movt3230_b_2210uf_001_detail-01

Close-up of the oscillator and the balance bridge of calibre 3230

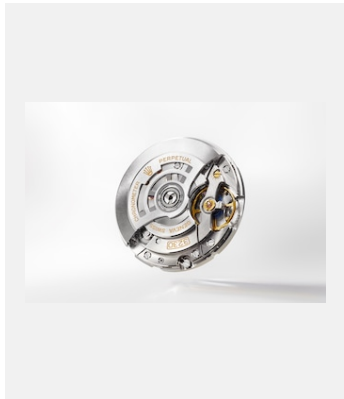
Credits: © Rolex/Ulysse Frechelin



Ref: movt3230_b_2210uf_001_detail-02

Calibre 3230 being assembled

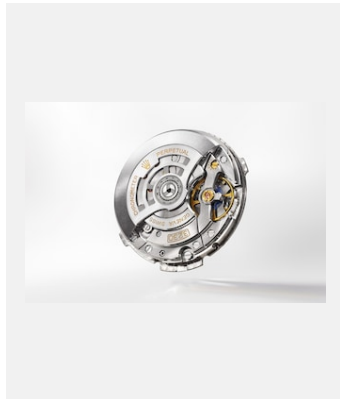
Credits: © Rolex/Ulysse Frechelin



Ref: movt3230_b_2210uf_001_recto-02

Calibre 3230

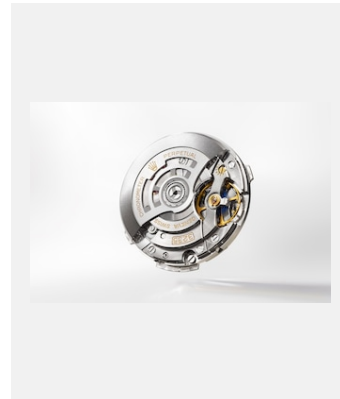
Credits: © Rolex/Ulysse Frechelin



Ref: movt3230_c_2210uf_001_recto

Calibre 3230

Credits: © Rolex/Ulysse Frechelin



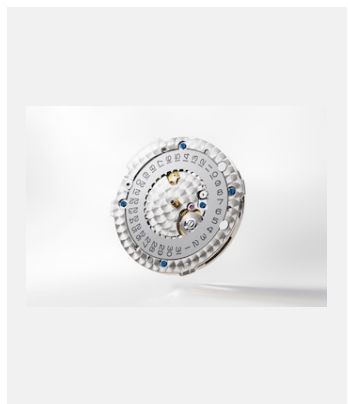
Ref: movt3235_b_2210uf_001_recto

Calibre 3235

Credits: © Rolex/Ulysse Frechelin

Contact sheet

MOVEMENTS



Ref: movt3235_b_2210uf_001_verso

Calibre 3235 – dial side

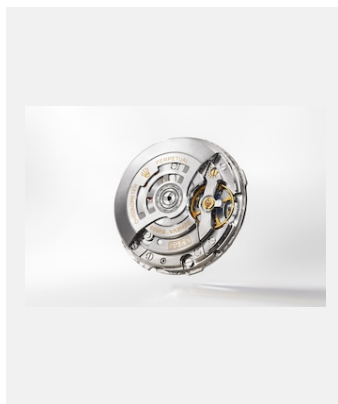
Credits: © Rolex/Ulysse Frechelin



Ref: movt3255_a_2210uf_001_detail

System driving the calendar (day and date) of calibre 3255

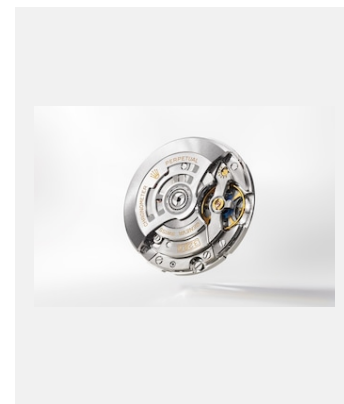
Credits: © Rolex/Ulysse Frechelin



Ref: movt3255_a_2210uf_001_recto

Calibre 3255

Credits: © Rolex/Ulysse Frechelin



Ref: movt3285_a_2210uf_001_recto

Calibre 3285

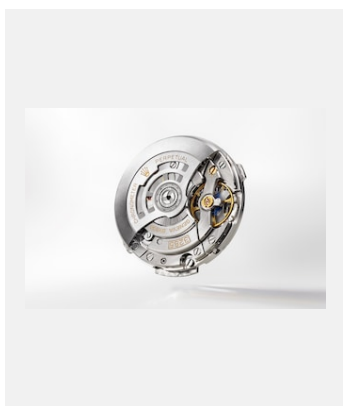
Credits: © Rolex/Ulysse Frechelin



Ref: movt3285_a_2210uf_001_verso

Close-up of the hour hand adjustment system of calibre 3285

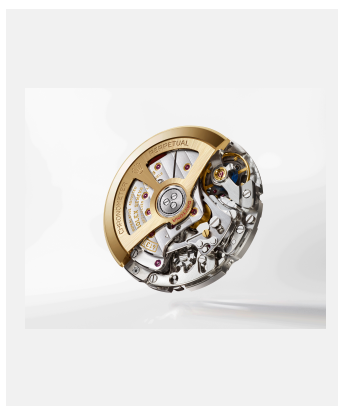
Credits: © Rolex/Ulysse Frechelin



Ref: movt3285_b_2210uf_001_recto

Calibre 3285

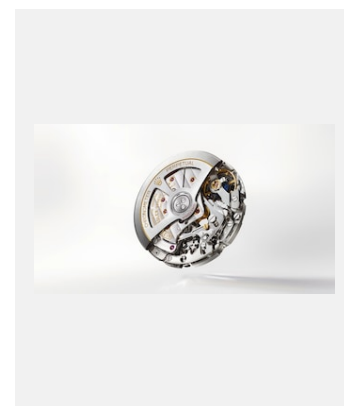
Credits: © Rolex/Ulysse Frechelin



Ref: movt4131_2301uf_002

Calibre 4131

Credits: © Rolex/Alain Costa



Ref: movt4131_2301uf_001

Calibre 4131

Credits: © Rolex/Alain Costa

Contact sheet

MOVEMENTS



Ref: movt4131_2301pd_003

Calibre 4131

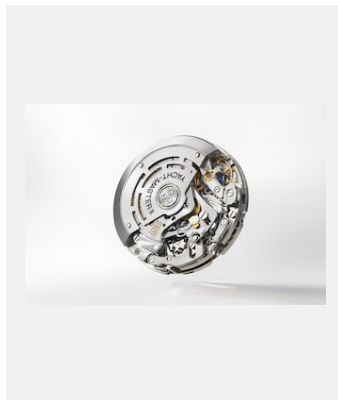
Credits: © Rolex/Alain Costa



Ref:

Calibre 4132 is exclusive to the version of the Cosmograph Daytona created to celebrate the 24 Hours of Le Mans centenary.

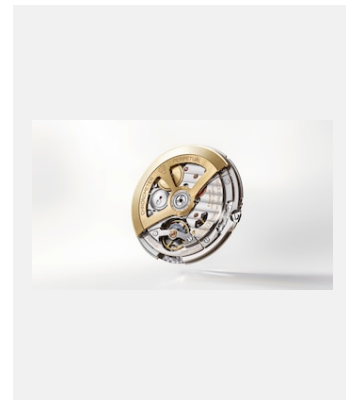
Credits: ©Rolex/Ulysse Fréchélin



Ref: movt4161_2210uf_001_recto

Calibre 4161

Credits: © Rolex



Ref: movt7140_2301uf_001

Calibre 7140

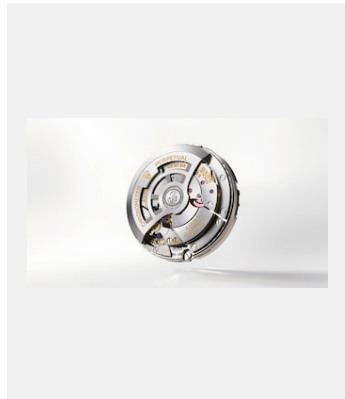
Credits: ©Rolex/Ulysse Fréchélin



Ref: movt7140_2301uf_002

Calibre 7140

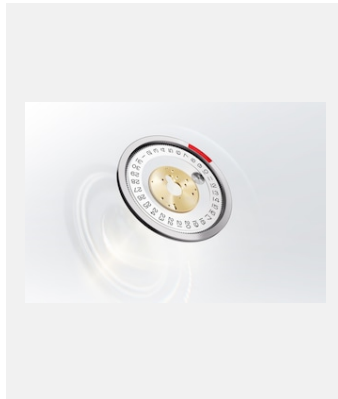
Credits: ©Rolex/Ulysse Fréchélin



Ref: movt9002_2301uf_001

Calibre 9002

Credits: ©Rolex/Ulysse Fréchélin



Ref: saros_2301_006a_rvb

Saros annual calendar

Credits: © Rolex/Ulysse Fréchélin