

版權頁
機芯

恒動擺陀

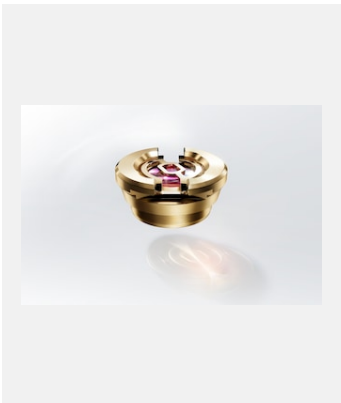


編碼: rotor_2301_003_spprint_rvb

32XX機芯系列，經恒動擺陀自動上鏈

鳴謝: © Rolex/Stojan & Voumard

PARAFLEX緩震裝置



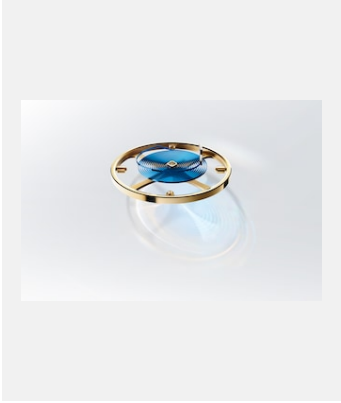
編碼: paraflex_2301_002b_rvb

Paraflex緩震裝置

鳴謝: © Rolex

版權頁
機芯

PARACHROM游絲

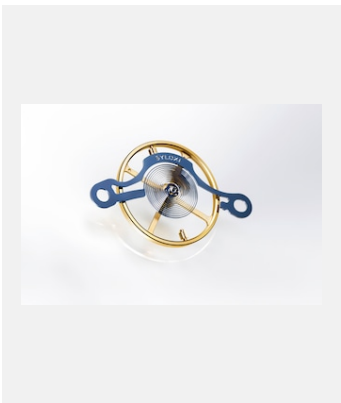


編碼: spiral_2301_004e_rvb

裝配在平衡擺輪上的藍色Parachrom游絲

鳴謝: © Rolex

SYLOXI矽游絲



編碼: syloxi_2303uf_001

7140型機芯的Syloxi矽游絲

鳴謝: ©Rolex/Ulysse Frechelin

版權頁
機芯

擒縱裝置

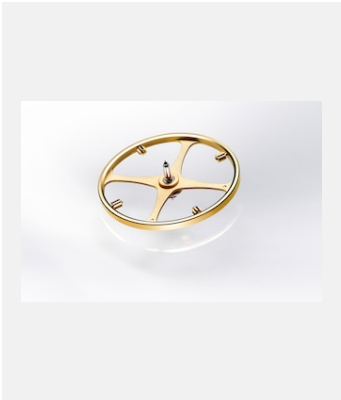


編碼: chronergy_2303uf_083

Chronergy擒縱系統

鳴謝: ©Rolex/Ulysse Frechelin

平衡擺輪



編碼: microstella_2303uf_001

平衡擺輪及微調螺母

鳴謝: ©Rolex/Ulysse Frechelin