

Planche-contact

NOUVEAUX CADRANS

DOCUMENT

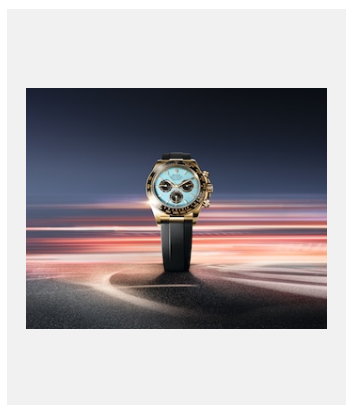


Réf.: rolex-media-brochure_empty

Nouveaux cadrans – Fiche de
présentation

Crédits photo: © Rolex

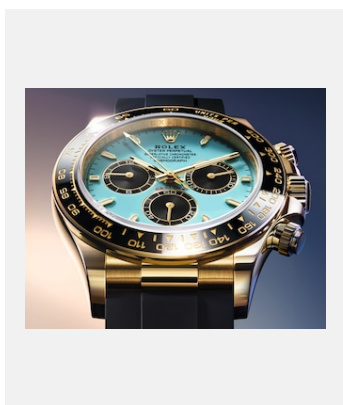
GALERIE



Réf.: m126518ln-0014_2501stojan_001

Oyster Perpetual Cosmograph
Daytona, or jaune 18 ct

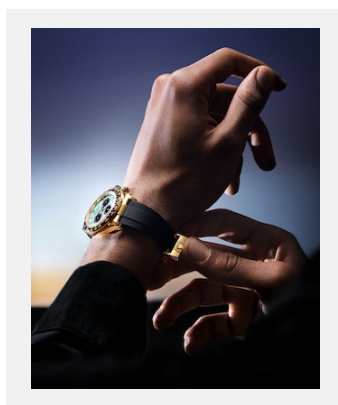
Crédits photo: ©Rolex/stojan



Réf.: m126518ln-0014_2412uf_001_c

Gros plan sur le cadran de l'Oyster
Perpetual Cosmograph Daytona, or
jaune 18 ct

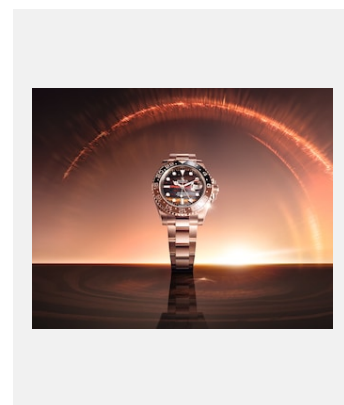
Crédits photo: ©Rolex/Ulysse
Frechelin



Réf.: m126518ln-0014_2501ad_002_cmjn

Oyster Perpetual Cosmograph
Daytona, or jaune 18 ct

Crédits photo: ©Rolex/Audoin
Desforges



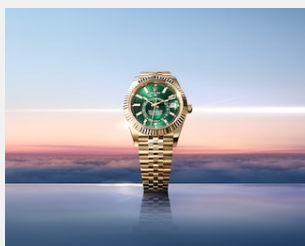
Réf.: m126715chnr-0002_2501stojan_001

Oyster Perpetual GMT-Master II, or
Everose 18 ct

Crédits photo: ©Rolex/stojan

Planche-contact

NOUVEAUX CADRANS

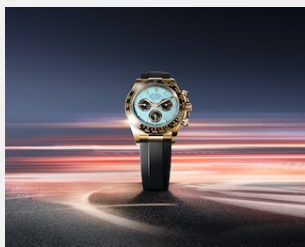


Réf.: m336938-0008_2501stojan_001

Oyster Perpetual Sky-Dweller, or
jaune 18 ct

Crédits photo: ©Rolex/stojan

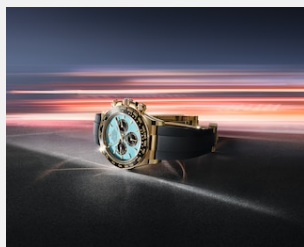
VISUELS



Réf.: m126518ln-0014_2501stojan_001

Oyster Perpetual Cosmograph
Daytona, or jaune 18 ct

Crédits photo: ©Rolex/stojan



Réf.: m126518ln-0014_2501stojan_002

Oyster Perpetual Cosmograph
Daytona, or jaune 18 ct

Crédits photo: ©Rolex/stojan



Réf.: m126518ln-0014_2412uf_001_c

Gros plan sur le cadran de l'Oyster
Perpetual Cosmograph Daytona, or
jaune 18 ct

Crédits photo: ©Rolex/Ulysse
Frechelin



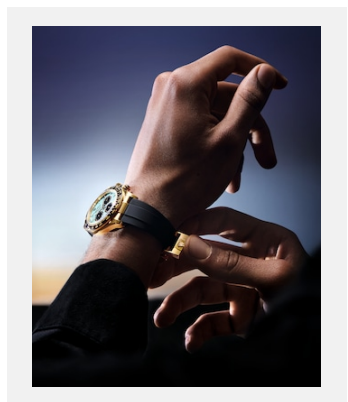
Réf.: m126518ln-0014_2501ad_001_cmjn

Oyster Perpetual Cosmograph
Daytona, or jaune 18 ct

Crédits photo: ©Rolex/Audoin
Desforges

Planche-contact

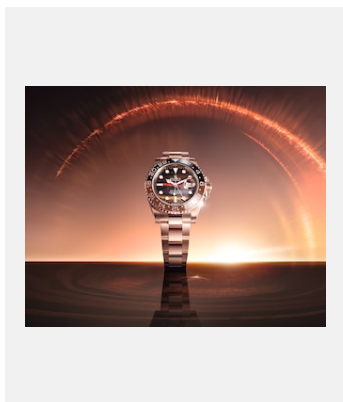
NOUVEAUX CADRANS



Réf.: m126518ln-0014_2501ad_002_cmjn

Oyster Perpetual Cosmograph
Daytona, or jaune 18 ct

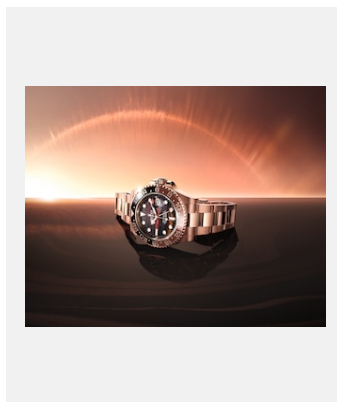
Crédits photo: ©Rolex/Audoin
Desforges



Réf.: m126715chnr-0002_2501stojan_001

Oyster Perpetual GMT-Master II, or
Everose 18 ct

Crédits photo: ©Rolex/stojan



Réf.: m126715chnr-0002_2501stojan_002

Oyster Perpetual GMT-Master II, or
Everose 18 ct

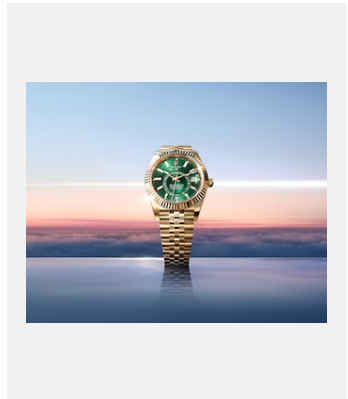
Crédits photo: ©Rolex/stojan



Réf.: m126715chnr-0002_412uf_001_c

Gros plan sur le cadran en œil de fer
de l'Oyster Perpetual GMT-Master II,
or Everose 18 ct

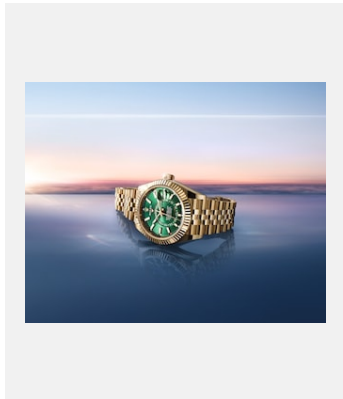
Crédits photo: ©Rolex/Ulysse
Frechelin



Réf.: m336938-0008_2501stojan_001

Oyster Perpetual Sky-Dweller, or
jaune 18 ct

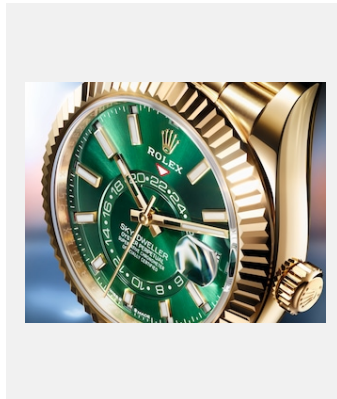
Crédits photo: ©Rolex/stojan



Réf.: m336938-0008_2501stojan_002

Oyster Perpetual Sky-Dweller, or
jaune 18 ct

Crédits photo: ©Rolex/stojan



Réf.: m336938-0008_2412uf_001_c

Gros plan sur le cadran vert vif de
l'Oyster Perpetual Sky-Dweller, or
jaune 18 ct

Crédits photo: ©Rolex/Ulysse
Frechelin



Réf.: movt4131_3285_9002_2411uf_002

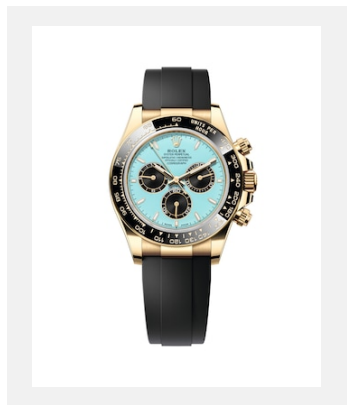
Calibre 4131, calibre 3285 et calibre
9002

Crédits photo: © Rolex/Ulysse
Frechelin

Planche-contact

NOUVEAUX CADRANS

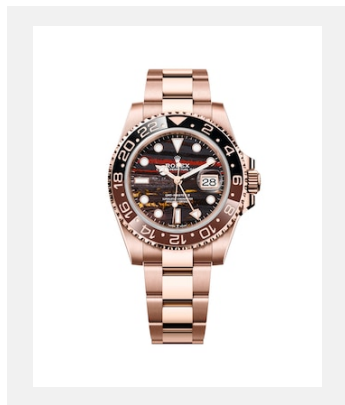
DÉCLINAISONS



Réf.: m126518ln-0014

Cosmograph Daytona

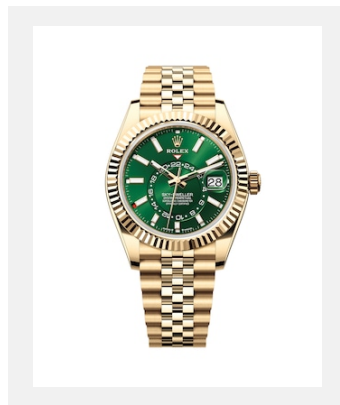
Crédits photo: © Rolex



Réf.: m126715chnr-0002

GMT-Master II

Crédits photo: © Rolex



Réf.: m336938-0008

Sky-Dweller

Crédits photo: © Rolex