

版權頁
勞力士陶瓷資料冊

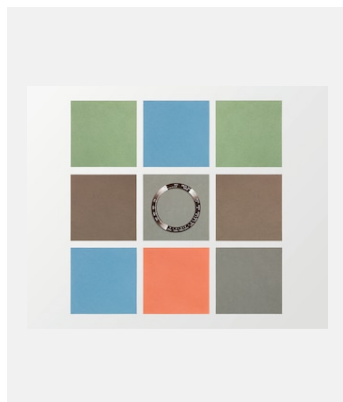
圖片



編碼: 1_cerachrom_1

CERACHROM INSERTS AND MONOBLOC CERACHROM BEZEL

鳴謝: © Rolex/Rolex



編碼: 2_cerachrom_2

VARIOUS BASIC CERAMIC PREPARATIONS

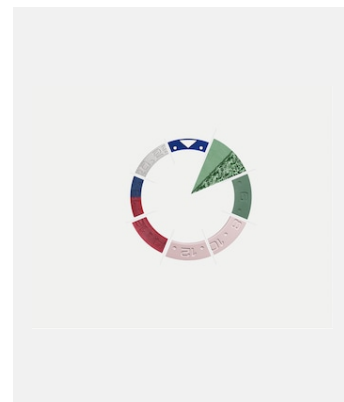
鳴謝: © Rolex/Rolex



編碼: 3_cerachrom_3

BASIC CERAMIC PREPARATION WITH AND WITHOUT BINDING AGENTS

鳴謝: © Rolex/Thomas Hensinger



編碼: 4_cerachrom_4

MANUFACTURING PROCESS OF A CERAMIC COMPONENT

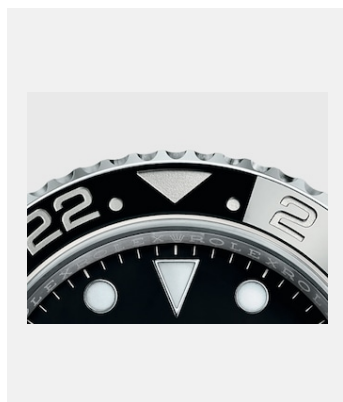
鳴謝: © Rolex/Rolex



編碼: 5_cerachrom_5

TWO-COLOUR CERACHROM INSERTS

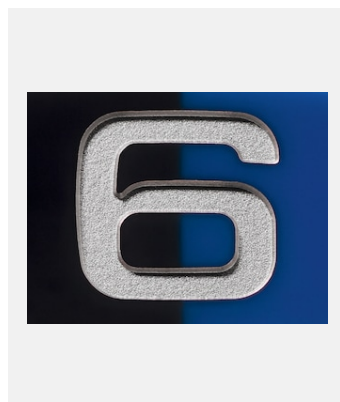
鳴謝: © Rolex/Joël Von Allmen



編碼: 6_cerachrom_6

CLEARLY DEFINED COLOURS

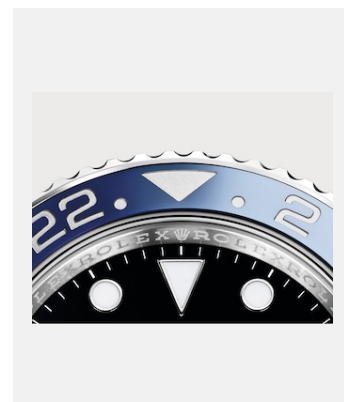
鳴謝: © Rolex/Rolex



編碼: 7_cerachrom_7

TWO-COLOUR CERACHROM INSERTS IN BLUE AND BLACK CERAMIC

鳴謝: © Rolex/Rolex



編碼: 8_cerachrom_8

CLEARLY DEFINED COLOUR

鳴謝: © Rolex/Rolex

版權頁

勞力士陶瓷資料冊



編碼: 9_cerachrom_9

TWO-COLOUR CERACHROM
INSERT IN RED AND BLUE
CERAMIC

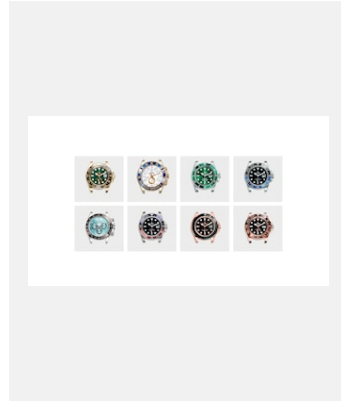
鳴謝: © Rolex/Rolex



編碼: 10_cerachrom_10

CERACHROM INSERTS AND
MONOBLOC CERACHROM BEZEL

鳴謝: © Rolex/Joël Von Allmen



編碼: 11_cerachrom_11a

WATCHES WITH A CERACHROM
INSERT OR CERACHROM BEZEL

鳴謝: © Rolex/Rolex