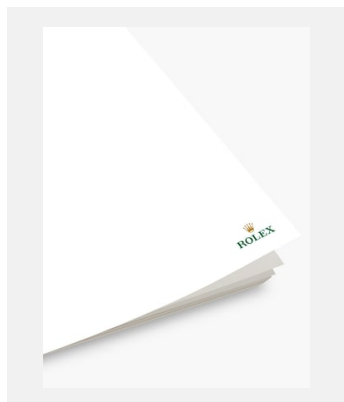


Planche-contact

MAXI YACHT ROLEX CUP : EXCELLENCE ET ÉVOLUTION

DOCUMENTS

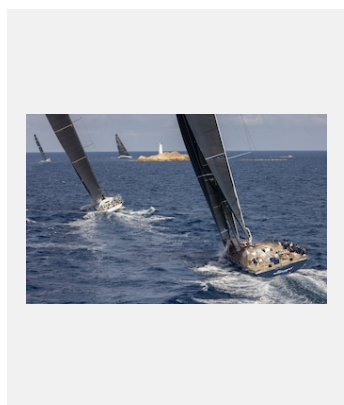


Réf.: rolex-media-brochure_empty

Maxi Yacht Rolex Cup : excellence et évolution

Crédits photo: © Rolex

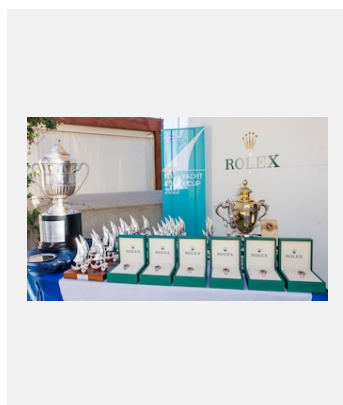
VISUELS



Réf.: maxi22cb_05010306

THE MADDALENA ARCHIPELAGO OFFERS A STUNNING ARRAY OF NATURAL MARKS FOR RACING AT THE MAXI YACHT ROLEX CUP

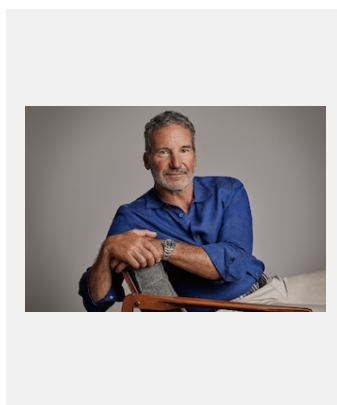
Crédits photo: © Rolex/Carlo Borlenghi



Réf.: maxi22cb_10010235

CLASS WINNERS AT THE MAXI YACHT ROLEX CUP ARE REWARDED FOR THEIR EXCELLENCE ON THE WATER

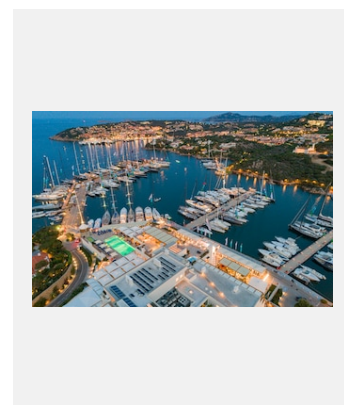
Crédits photo: © Rolex/Carlo Borlenghi



Réf.: paul-cayard__18ab_004cq5damwebhigh

ROLEX TESTIMONEE PAUL CAYARD, THE LEGENDARY YACHTSMAN FROM THE UNITED STATES, IS A PAST COMPETITOR AT THE MAXI YACHT ROLEX CUP

Crédits photo: © Rolex/Alexandre de Brabant



Réf.: maxi19cb_00286

THE MAXI YACHT ROLEX CUP IS CENTRED UPON THE INCOMPARABLE YACHT CLUB COSTA SMERALDA

Crédits photo: © Rolex/Carlo Borlenghi

Planche-contact

MAXI YACHT ROLEX CUP : EXCELLENCE ET ÉVOLUTION



Réf.: maxi22cb_05020342

OTHERWISE LARGE YACHTS CAN BE SEEMINGLY DWARFED BY SOME OF THE OPPOSITION, WITH ENTRIES RANGING IN SIZE FROM 60 FEET (18.29 METRES) TO OVER 130 FT (40M)

Crédits photo: © Rolex/Carlo Borlenghi



Réf.: maxi22cb_05020552

RACING AT THE MAXI YACHT ROLEX CUP IS TYPICALLY INTENSE AND CLOSE FOUGHT

Crédits photo: © Rolex/Carlo Borlenghi



Réf.: maxi22cb_05022015

THE ROCKS AND ISLETS OF THE COSTA SMERALDA FORM SPECTACULAR NATURAL RACING MARKS FOR THE INSHORE COURSES AT THE MAXI YACHT ROLEX CUP

Crédits photo: © Rolex/Carlo Borlenghi



Réf.: maxi22cb_09010022

THE MAXI YACHT ROLEX CUP IS NO PLACE FOR THE FAINT OF HEART

Crédits photo: © Rolex/Carlo Borlenghi



Réf.: maxi22cb_09060814

COURSES AT THE MAXI YACHT ROLEX CUP TAKE YACHTS CLOSE INTO THE SHORE

Crédits photo: © Rolex/Carlo Borlenghi



Réf.: maxi22cb_09061075

IMPECCABLE CREW WORK, DEFT HELMING AND FOCUSSED TACTICS ARE THE HALLMARKS OF MAXI YACHT ROLEX CUP RACING

Crédits photo: © Rolex/Carlo Borlenghi