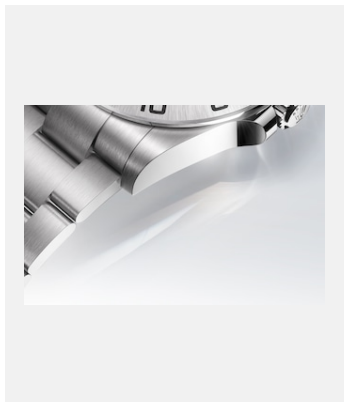


Contact sheet

MATERIALS

OYSTERSTEEL



Ref: oysteel_2302_003_rvb

Case and bracelet in Oystersteel

Credits: © Rolex/Stojan & Voumard

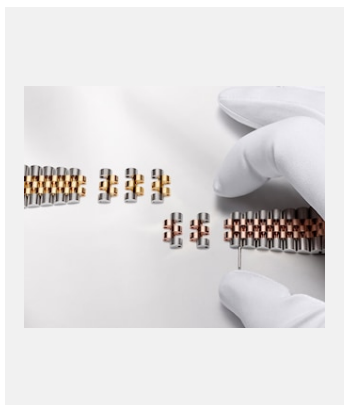


Ref: wmmaterial_2309uf_001

Oyster bracelet and Oysterlock clasp
in Oystersteel

Credits: © Rolex/Ulysse Fréchélin

ROLESOR



Ref: wmmaterial_2309uf_003

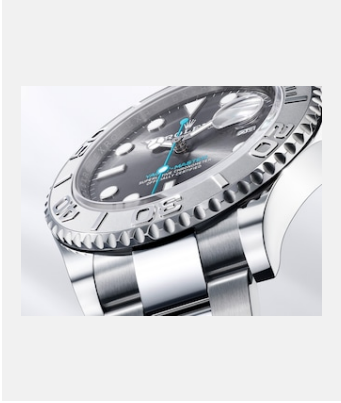
Jubilee bracelets in yellow Rolesor
and Everose Rolesor versions

Credits: © Rolex/Ulysse Fréchélin

Contact sheet

MATERIALS

ROLESIUM



Ref: m126622-0001_2402uf_001

Rolesium version of the Yacht-Master 40

Credits: © Rolex/Ulysse Fréchélin

YELLOW GOLD



Ref: 2023-watchmaking-features-yellow-gold-still_ooh_master_rgb

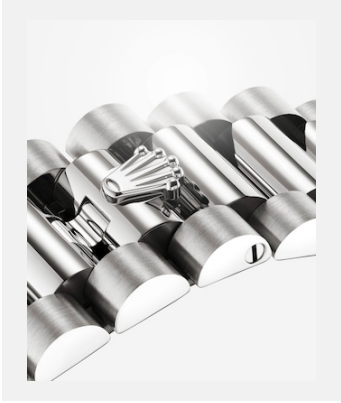
Day-Date 40 in 18 ct yellow gold

Credits: © Rolex//Stojan & Voumard

Contact sheet

MATERIALS

WHITE GOLD

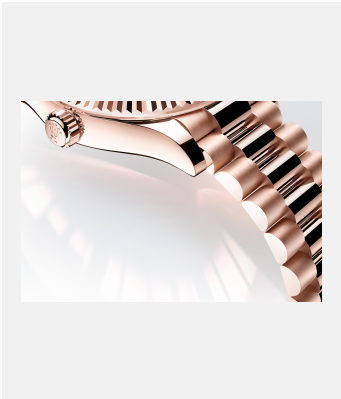


Ref: m128349rbr-0008_2207dh_001-lowres

President bracelet in 18 ct white gold

Credits: © Rolex/Denis Hayoun

EVEROSE GOLD



Ref: everose_2301_007_sprint_rvb

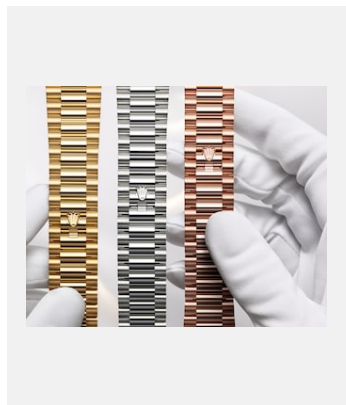
Case and President bracelet in 18 ct
Everose gold

Credits: © Rolex/Stojan & Voumard

Contact sheet

MATERIALS

ROLEX GOLDS

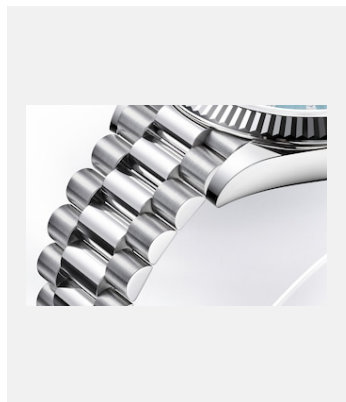


Ref: wmmaterial_2390uf_005

President bracelets in 18 ct yellow,
white and Everose gold

Credits: © Rolex/Ulysse Fréchélin

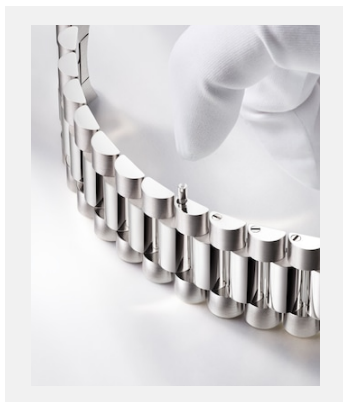
PLATINUM



Ref: m228236-0006_2303uf_001

Case and bracelet in platinum

Credits: ©Rolex/Ulysse Frechelin



Ref: wmmaterial_2309uf_004

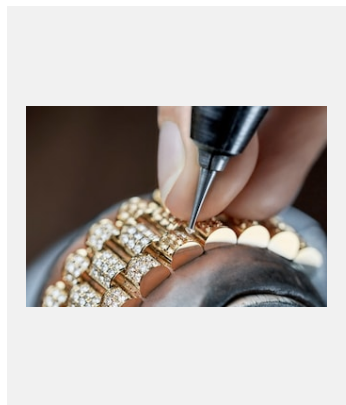
President bracelet in 950 platinum

Credits: ©Rolex/Ulysse Frechelin

Contact sheet

MATERIALS

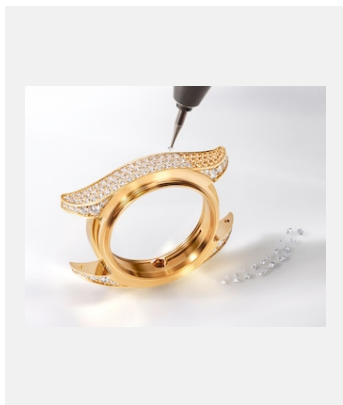
PRECIOUS STONES AND GEM-SETTING



Ref: wmgemsetting_m279458br-0001_2102cw_0056_v2

Gem-setting of a President bracelet with diamonds

Credits: © Rolex/Ulysse Frechelin



Ref: wmgemsetting_2309uf_001

Setting the side of an 18 ct yellow gold middle case with brilliant-cut diamonds

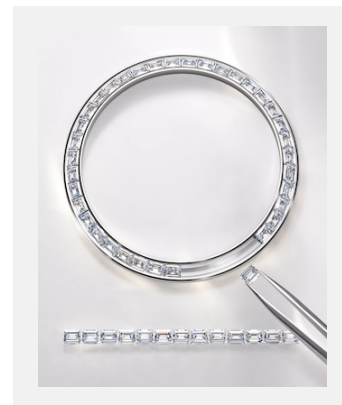
Credits: © Rolex/Ulysse Frechelin



Ref: wmgemsetting_2309uf_002

Setting a paved dial in 18 ct pink gold with diamonds

Credits: © Rolex/Ulysse Frechelin



Ref: wmgemsetting_2309uf_003

Setting a bezel in 950 platinum with trapeze-cut diamonds

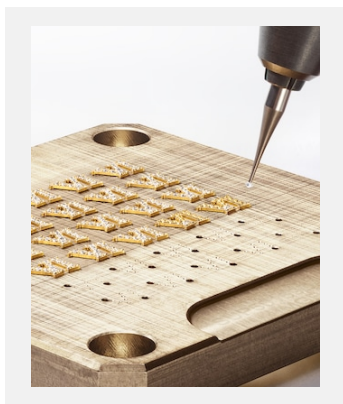
Credits: © Rolex/Ulysse Frechelin



Ref: wmgemsetting_2309uf_004

Brilliant-cut diamonds before gem-setting

Credits: © Rolex/Ulysse Frechelin



Ref: wmgemsetting_2309uf_005

Setting 18 ct yellow gold Roman numerals with diamonds

Credits: © Rolex/Ulysse Frechelin

Contact sheet

MATERIALS

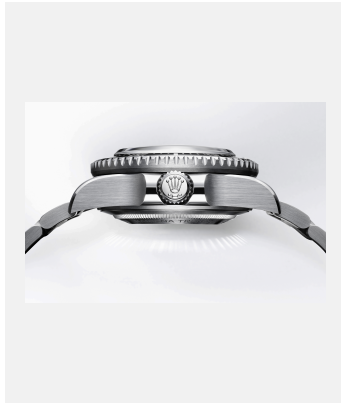
TITANIUM AND FINISHING



Ref: titanium_2301_006_rvb

Middle case of the Yacht-Master 42 in
RLX titanium

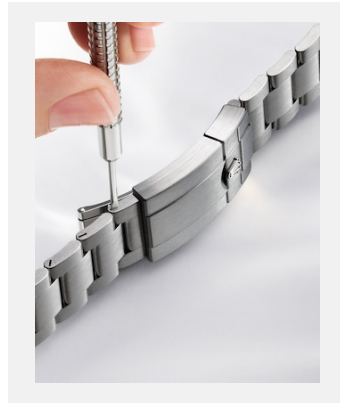
Credits: © Rolex/Stojan & Voumard



Ref: m126067-0001_2303uf-001

Technical satin and polished finishes
on the Rolex Deepsea

Credits: ©Rolex/Ulysse Fréchetin



Ref: wmmaterial_2309uf_002

Oysterlock clasp and Oyster bracelet
in RLX titanium

Credits: © Rolex/Ulysse Fréchetin