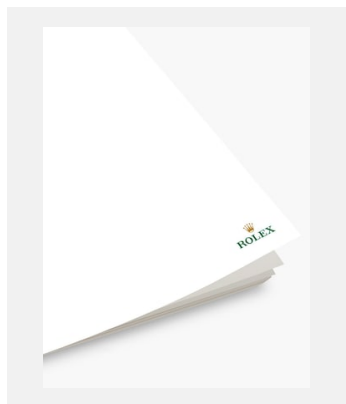


缩图目录  
切利尼系列

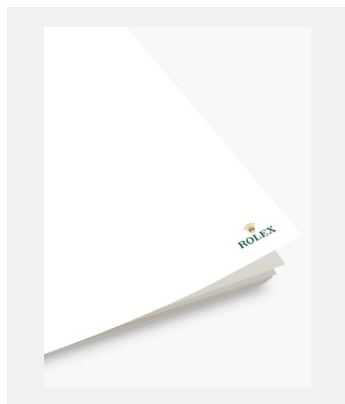
档案



编码: rolex-media-brochure\_empty

切利尼 - 展示参考资料

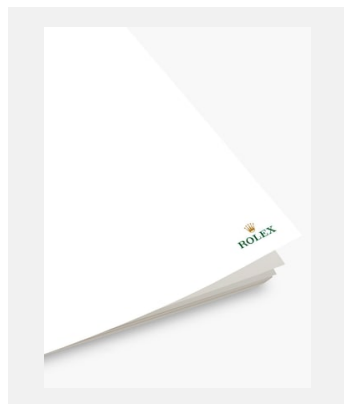
鸣谢: © Rolex



编码: rolex-media-brochure\_empty

切利尼月相型 - 参考资料

鸣谢: © Rolex



编码: rolex-media-brochure\_empty

切利尼双时型 - 参考资料

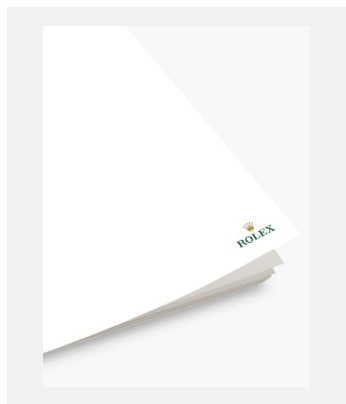
鸣谢: © Rolex



编码: rolex-media-brochure\_empty

切利尼日历型 - 参考资料

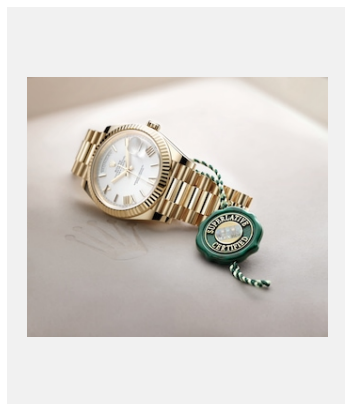
鸣谢: © Rolex



编码: rolex-media-brochure\_empty

下载切利尼时间型 - 参考资料

鸣谢: © Rolex



编码: m228238-0042\_1904jva\_001

超卓天文台精密时计认证

鸣谢: © Rolex

缩图目录  
切利尼系列

切利尼月相型

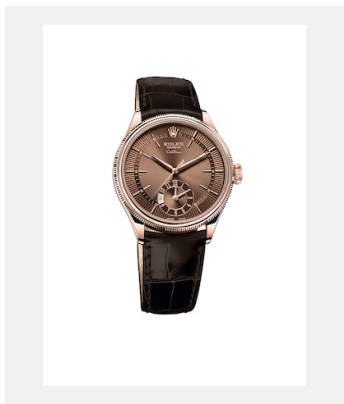


编码: m50535-0002\_PK13\_001

切利尼月相型

鸣谢: © Rolex

切利尼双时型



编码: m50525-0015\_PK13\_001

切利尼双时型

鸣谢: © Rolex



编码: m50529-0007\_PK13\_001

切利尼双时型

鸣谢: © Rolex

缩图目录  
切利尼系列

切利尼日历型



编码: m50515-0008\_PK13\_001

切利尼日历型

鸣谢: © Rolex

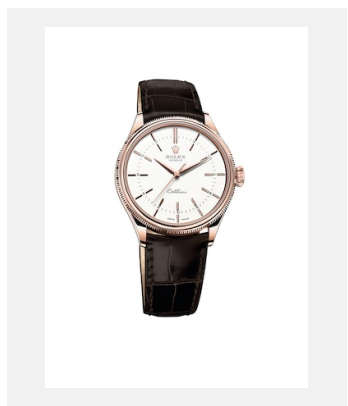


编码: m50519-0011\_PK13\_001

切利尼日历型

鸣谢: © Rolex

切利尼时间型



编码: m50505-0020\_PK13\_001

切利尼时间型

鸣谢: © Rolex



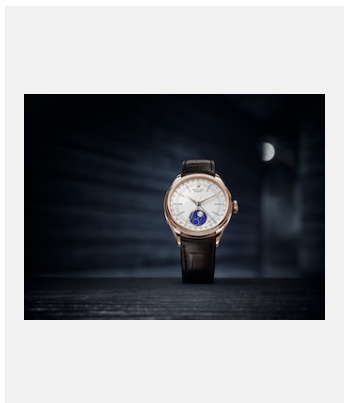
编码: m50509-0016\_PK13\_001

切利尼时间型

鸣谢: © Rolex

缩图目录  
切利尼系列

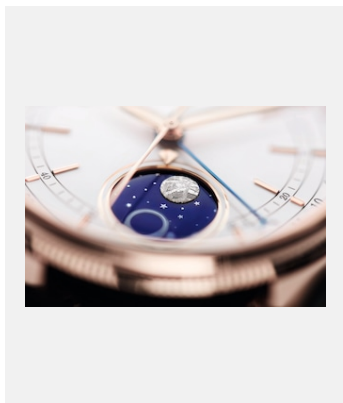
表款



编码: 01\_m50535-0002\_1701dm\_001

切利尼月相型

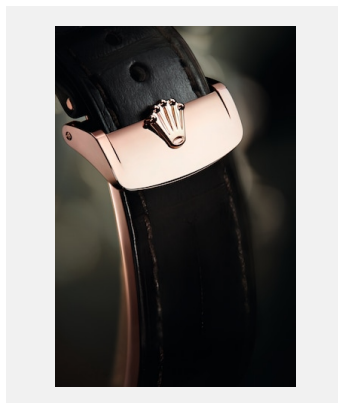
鸣谢: © Rolex/Jean-Daniel Meyer



编码: 02\_m50535-0002\_1701ac\_007

切利尼月相型

鸣谢: © Rolex/Alain Costa



编码: 03\_m50535-0002\_1701ac\_008

切利尼月相型

鸣谢: © Rolex/Alain Costa