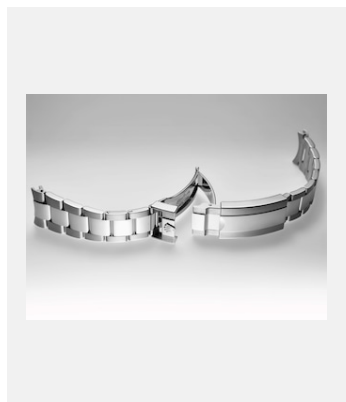


Provino a contatto

# BRACCIALI

## FERMAGLI E SISTEMI DI ALLUNGAMENTO DEI BRACCIALI



Ref.: clasp\_13cl\_004

Oysterlock

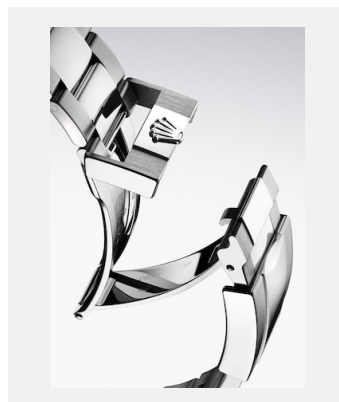
Crediti: © Christophe Lauffenburger



Ref.: clasp\_13cl\_006

Oysterlock

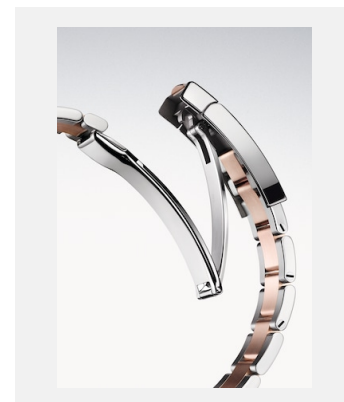
Crediti: © Christophe Lauffenburger



Ref.: elmt\_1704jva\_002

Bracciale Oyster con fermaglio Oysterlock

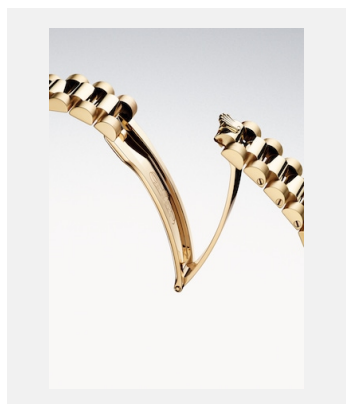
Crediti: © Joël von Allmen



Ref.: elmt\_1704jva\_008

Bracciale Oyster con fermaglio Oysterclasp

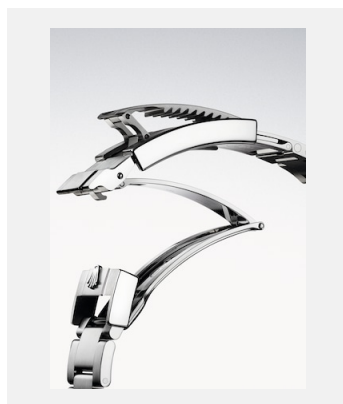
Crediti: © Joël von Allmen



Ref.: elmt\_1704jva\_001

Bracciale President con fermaglio Crownclasp

Crediti: © Joël von Allmen



Ref.: elmt\_1704jva\_005

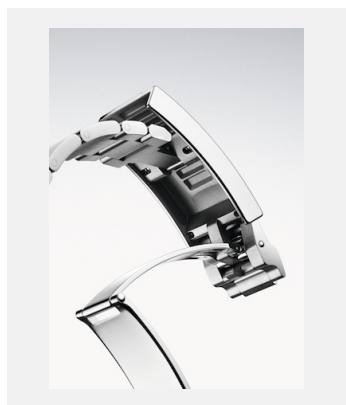
Rolex Glidelock

Crediti: © Joël von Allmen

Provino a contatto

# BRACCIALI

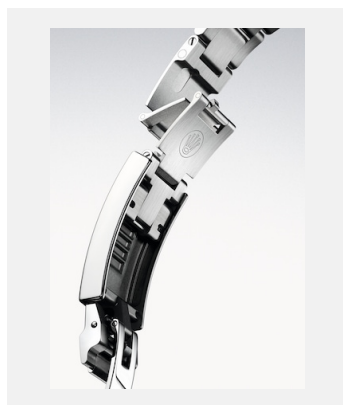
## FERMAGLI E SISTEMI DI ALLUNGAMENTO DEI BRACCIALI



Ref.: elmt\_1704jva\_006

Rolex Glidelock

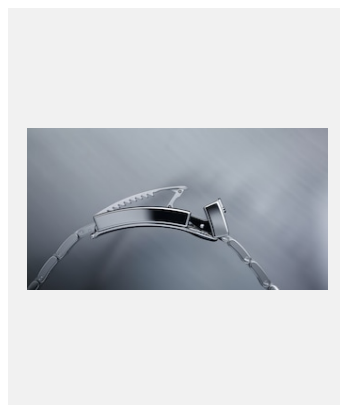
Crediti: © Joël von Allmen



Ref.: elmt\_1704jva\_004

Maglia di allungamento Fliplock

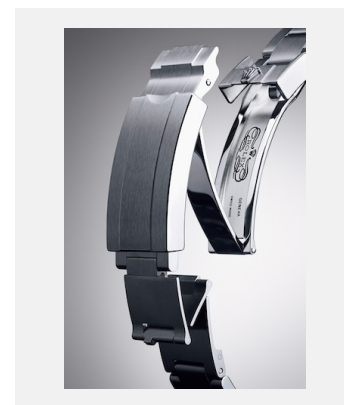
Crediti: © Christophe Lauffenburger



Ref.: bracelet\_glidelock-13978

Rolex Glidelock

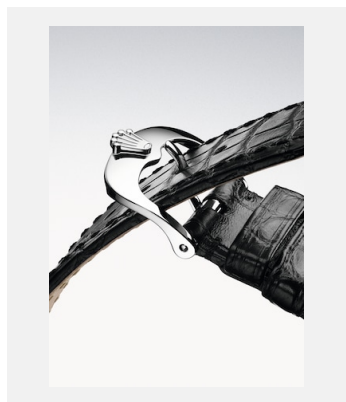
Crediti: © Jean-Daniel Meyer



Ref.: m116600-0003\_parts\_001

Maglia di allungamento Fliplock

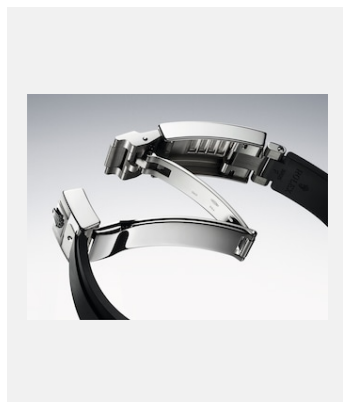
Crediti: © Alain Costa



Ref.: elmt\_1704jva\_003

Cinturino in pelle nera con fibbia ad ardiglione in oro bianco 18 ct.

Crediti: © Joël von Allmen



Ref.: elmt\_1812jva\_001

Bracciale Oysterflex e fermaglio Oysterlock

Crediti: © Joël von Allmen