

Planche-contact

ROLEX SWAN CUP

VISUELS



Réf.: 1_swan16cb_24251

JAMES BLAKEMORE (L), OWNER OF MUSIC, RECEIVES A ROLEX TIMEPIECE AND THE GRAND PRIX CLASS TROPHY FROM GIAN RICCARDO MARINI

Crédits photo: © Rolex/Carlo Borlenghi



Réf.: 2_swan16cb_24262

NATALIA BRAILOIU (R), OWNER OF NATALIA, RECEIVES A ROLEX TIMEPIECE AND THE SWAN 42 CLASS TROPHY FROM GIAN RICCARDO MARINI

Crédits photo: © Rolex/Carlo Borlenghi



Réf.: 3_swan16cb_24313

DONALD MACPHERSON (C), OWNER OF FREYA, RECEIVES A ROLEX TIMEPIECE AND THE MAXI CLASS TROPHY FROM GIAN RICCARDO MARINI

Crédits photo: © Rolex/Carlo Borlenghi



Réf.: 4_swan16cb_24288

GERARD LOGEL (R), OWNER OF AROBAS, RECEIVES A ROLEX TIMEPIECE AND THE MINI MAXI CLASS TROPHY FROM GIAN RICCARDO MARINI

Crédits photo: © Rolex/Carlo Borlenghi



Réf.: 5_swan16cb_24335

CHRISTIAN PLUMP (C), OWNER OF ELENA NOVA, RECEIVES A ROLEX TIMEPIECE AND THE SWAN 45 WORLD CHAMPIONSHIP TROPHY FROM LEONARDO FERRAGAMO (L), PRINCESS ZAHRA AGA KHAN AND GIAN RICCARDO MARINI

Crédits photo: © Rolex/Carlo Borlenghi



Réf.: 6_swan16cb_20200

DONALD MACPHERSON'S SWAN 90S FREYA, WINNER OF THE MAXI CLASS

Crédits photo: © Rolex/ Carlo Borlenghi



Réf.: 7_swan16cb_14326

NATALIA SUCCESSFULLY DEFENDED HER TITLE IN THE CLUBSWAN 42 CLASS

Crédits photo: © Rolex/Carlo Borlenghi



Réf.: 8_swan16cb_13191

JAMES BLAKEMORE'S SWAN 53 MUSIC WON ALL FOUR RACES IN THE GRAND PRIX CLASS

Crédits photo: © Rolex/Carlo Borlenghi

Planche-contact

ROLEX SWAN CUP



Réf.: 9_swan16cb_20909

CHRISTIAN PLUMP'S ELENA NOVA, WINNER OF THE SWAN 45 WORLD CHAMPIONSHIP

Crédits photo: © Rolex/ Carlo Borlenghi



Réf.: 10_swan16cb_06826

GERARD LOGEL'S SWAN 601 AROBAS, WINNER OF THE MINI MAXI CLASS AT THE 2016 ROLEX SWAN CUP

Crédits photo: © Rolex/ Carlo Borlenghi



Réf.: 11_swan16cb_06671

SLEEPER X, WINNER OF THE SPARKMAN & STEPHENS CLASS, LEADING THE FLEET THROUGH THE MADDALENA ARCHIPELAGO

Crédits photo: © Rolex/ Carlo Borlenghi



Réf.: 12_swan16cb_22581

THE SWAN MAXI CLASS IN ACTION DURING THE REGATTA'S DRAMATIC FINAL RACE

Crédits photo: © Rolex/ Carlo Borlenghi



Réf.: 13_swan16cb_23213

RACING IN THE ONE-DESIGN SWAN 45 WORLD CHAMPIONSHIP WAS INTENSE AND CLOSE-FOUGHT

Crédits photo: © Rolex/ Carlo Borlenghi



Réf.: 14_swan16cb_22736

OWNERS AND SAILORS ALIKE ARE DRAWN TO THE COSTA SMERALDA'S WORLD FAMOUS RACECOURSES

Crédits photo: © Rolex/ Carlo Borlenghi



Réf.: 15_swan16cb_22339

THE SWAN 45 FLEET ENJOYING THE WINDY CONDITIONS DURING THE LAST RACE OF THE 2016 ROLEX SWAN CUP

Crédits photo: © Rolex/ Carlo Borlenghi



Réf.: 16_swan16cb_21142

THE SWAN 45 FLEET COMPRISED SIXTEEN YACHTS VYING TO BE CROWNED WORLD CHAMPION

Crédits photo: © Rolex/ Carlo Borlenghi

Planche-contact

ROLEX SWAN CUP



Réf.: 17_swan16cb_21512

CLOSE SAILING IS A DEFINING
FEATURE OF THE SWAN 45
WORLD CHAMPIONSHIP

Crédits photo: © Rolex/ Carlo
Borlenghi



Réf.: 18_swan16cb_15091

PERFECT SAILING CONDITIONS
FOR CLUBSWAN 42 ORBIT/
FARRMARMO ON THE THIRD DAY
OF RACING

Crédits photo: © Rolex/ Carlo
Borlenghi



Réf.: 19_swan16cb_07296

SWAN 90 B5 PASSES THE ISLAND
OF MORTORIO

Crédits photo: © Rolex/ Carlo
Borlenghi



Réf.: 20_swan16cb_14930

CLUBSWAN 50 CUORDILEONE
RACING OFF PORTO CERVO
DURING THE 2016 ROLEX SWAN
CUP

Crédits photo: © Rolex/ Carlo
Borlenghi



Réf.: 21_swan16cb_06391

THE SWAN MAXI CLASS,
FEATURING SELENE AND PLIS
PLAY, IS CONTESTED BY THE
EVENT'S LARGEST YACHTS

Crédits photo: © Rolex/ Carlo
Borlenghi



Réf.: 22_swan16cb_15103

CLUBSWAN 42 NATALIA WON FIVE
OF THE OPENING SEVEN RACES
IN HER CLASS

Crédits photo: © Rolex/ Carlo
Borlenghi



Réf.: 23_swan16cb_15018

THE LARGEST COMPETING CLASS
AT THE 2016 ROLEX SWAN CUP
COMPRISES THE 36 CLASSIC
SPARKMAN & STEPHENS DESIGNS

Crédits photo: © Rolex/ Carlo
Borlenghi



Réf.: 24_swan16cb_07323

AROBAS LEADING THE FLEET OF
MINI MAXIS ON DAY TWO OF
RACING

Crédits photo: © Rolex/ Carlo
Borlenghi

Planche-contact

ROLEX SWAN CUP



Réf.: 25_swan16cb_17211

SWAN 50 GENAPI DURING THE
THIRD DAY OF RACING

Crédits photo: © Rolex/ Carlo
Borlenghi



Réf.: 26_swan16cb_16573

THE BOWMAN ON SWAN 100
VARSOVIE PREPARING FOR THE
NEXT TACTICAL MANEUVER

Crédits photo: © Rolex/ Carlo
Borlenghi



Réf.: 27_swan16cb_16072

CLOSE SAILING IN THE MAXI
CLASS FOR PLIS PLAY, B5 AND
FREYA

Crédits photo: © Rolex/ Carlo
Borlenghi



Réf.: 28_swan16cb_14492

SWAN 65 SAIDA, A SPARKMAN &
STEPHENS DESIGN FROM
SWITZERLAND, DURING THE
THIRD DAY OF COMPETITION

Crédits photo: © Rolex/ Carlo
Borlenghi



Réf.: 29_swan16cb_15122

CLASSIC DIVISION ENTRANTS SIX
JAGUAR AND SAIDA SAILING
UNDER SPINNAKER

Crédits photo: © Rolex/ Carlo
Borlenghi



Réf.: 30_swan16cb_04209

LORD IRVINE LAIDLAW'S
HIGHLAND FLING 15 WAS
FASTEST AROUND THE RACE
COURSE ON THE FIRST DAY OF
COMPETITION

Crédits photo: © Rolex/ Carlo
Borlenghi



Réf.: 31_swan16cb_07465

A RECORD-BREAKING FLEET OF
NAUTOR'S SWAN YACHTS
NAVIGATE THE ROCKY OUTCROPS
OF SARDINIA'S COSTA SMERALDA

Crédits photo: © Rolex/ Carlo
Borlenghi



Réf.: 32_swan16cb_03134

TEAMWORK TO THE FORE ON THE
GERMAN YACHT CRILLA, ONE OF
THE ENTRANTS IN THE GRAND
PRIX CLASS

Crédits photo: © Rolex/ Carlo
Borlenghi

Planche-contact

ROLEX SWAN CUP



Réf.: 33_swan16cb_05500

AMONG THE 36-STRONG FLEET OF CLASSIC SPARKMAN & STEPHENS DESIGNS IS THE 47-FT VANESSA

Crédits photo: © Rolex/ Carlo Borlenghi



Réf.: 34_swan16cb_02551

NEWLY-LAUNCHED CLUBSWAN 50 LADYKILLER IS MAKING HER FIRST APPEARANCE ON THE COSTA SMERALDA

Crédits photo: © Rolex/ Carlo Borlenghi



Réf.: 35_swan16cb_05992

THE COSTA SMERALDA'S MYRIAD OF ROCKY OUTCROPS PROVIDE NAVIGATORS WITH NUMEROUS CHALLENGES

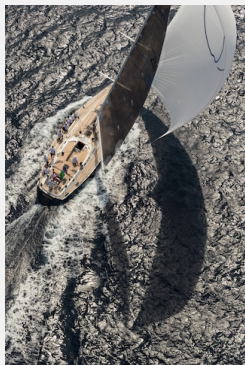
Crédits photo: © Rolex/ Carlo Borlenghi



Réf.: 36_swan16cb_02310

CUORDISOLE IS ONE OF 25 YACHTS COMPETING IN THE MINI MAXI CLASS

Crédits photo: © Rolex/ Carlo Borlenghi



Réf.: 37_swan16cb_02852

GAETANA'S SPINNAKER CREATES AN ALLURING SHADOW DURING THE FIRST DAY OF COMPETITION

Crédits photo: © Rolex/ Carlo Borlenghi



Réf.: 38_swan16cb_04713

BOWMAN PREPARES FOR ACTION ON SWAN 70 FLYING DRAGON

Crédits photo: © Rolex/ Carlo Borlenghi



Réf.: 39_swan16cb_02438

LEONARDO FERRAGAMO'S CLUBSWAN 50 CUORDILEONE ENJOYING THE CONDITIONS DURING HER DEBUT ROLEX SWAN CUP RACE

Crédits photo: © Rolex/ Carlo Borlenghi



Réf.: 40_swan16cb_04479

THE MAXI CLASS, COMPRISING SWAN 80 SELENE, IS RESERVED FOR THE EVENT'S LARGEST YACHTS

Crédits photo: © Rolex/ Carlo Borlenghi

Planche-contact

ROLEX SWAN CUP



Réf.: 41_swan16cb_02226

SPINNAKER SAILING FOR MINI MAXI COMPETITORS FLYING DRAGON AND CUORDISOLE DURING THE FIRST DAY OF RACING

Crédits photo: © Rolex/ Carlo Borlenghi



Réf.: 42_swan16cb_01270

CLUBSWAN 50 CUORDILEONE UNLEASHING HER POTENTIAL DURING THE FIRST DAY OF RACING

Crédits photo: © Rolex/ Carlo Borlenghi



Réf.: 43_swan16cb_01541

SWAN 56 CLEM PRIMERO MAKING PROGRESS THROUGH THE MADDALENA ARCHIPELAGO

Crédits photo: © Rolex/ Carlo Borlenghi



Réf.: 44_swan16cb_08589

THE SWEDISH CREW ONBOARD THE CLUBSWAN 50 LADYKILLER EXECUTING MANEUVERS DURING THE SECOND DAY OF RACING

Crédits photo: © Rolex/ Carlo Borlenghi



Réf.: 45_swan16cb_06867

CUORDILEONE IS ONE OF THREE CLUBSWAN 50S GRACING THE WATERS OFF PORTO CERVO FOR THE FIRST TIME

Crédits photo: © Rolex/ Carlo Borlenghi



Réf.: 46_swan16cb_06347

CLOSE SAILING CHARACTERIZES THE ROLEX SWAN CUP. HERE SELENE PURSUES RIVAL SWAN 80 PLIS PLAY

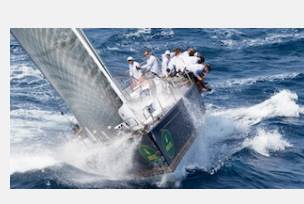
Crédits photo: © Rolex/ Carlo Borlenghi



Réf.: 47_swan16cb_08834

DURING THE FIRST TWO DAYS OF COMPETITION, LORD IRVINE LAIDLAW'S HIGHLAND FLING 15 WAS THE FASTEST YACHT ON THE WATER

Crédits photo: © Rolex/ Carlo Borlenghi



Réf.: 48_swan16cb_07073

SWAN 56 YASHA IS THE SOLE ENTRANT FROM ASIA AND AFTER THE SECOND DAY SHE LED THE GRAND PRIX STANDINGS

Crédits photo: © Rolex/ Carlo Borlenghi

Planche-contact

ROLEX SWAN CUP



Réf.: 49_swan16cb_01037

CLOSE COMPETITION IN THE MAXI CLASS FOR SWAN 80S SELENE AND PLIS PLAY

Crédits photo: © Rolex/ Carlo Borlenghi



Réf.: 50_swan16cb_14070

THE 125-STRONG ROLEX SWAN CUP FLEET ENJOYING THE STRONG WINDS WHICH CHARACTERISED THE THIRD DAY OF RACING

Crédits photo: © Rolex/Carlo Borlenghi



Réf.: 51_swan16cb_13956

A DIVERSE RANGE OF NAUTOR'S SWAN YACHTS NEGOTIATE THE WATERS AROUND THE ISLAND OF MONACI

Crédits photo: © Rolex/Carlo Borlenghi



Réf.: 52_swan16cb_13864

GAETANA MAKING GOOD PROGRESS ON THE COASTAL COURSE ORGANISED ON DAY THREE OF RACING

Crédits photo: © Rolex/Carlo Borlenghi



Réf.: 53_swan16cb_13491

DONALD MACPHERSON'S SWAN 90S FREYA LED THE MAXI CLASS AFTER THREE RACES

Crédits photo: © Rolex/Carlo Borlenghi



Réf.: 54_swan16cb_13211

SWAN 100 VARSOVIE IS ONE OF THE LARGEST COMPETING YACHTS AT THE 2016 ROLEX SWAN CUP

Crédits photo: © Rolex/Carlo Borlenghi



Réf.: 55_swan16cb_13175

MARTIN WESCOTT'S SWAN 57 EQUINOCCIO HAS TRAVELLED FROM CHILE TO COMPETE AT THE ROLEX SWAN CUP

Crédits photo: © Rolex/Carlo Borlenghi



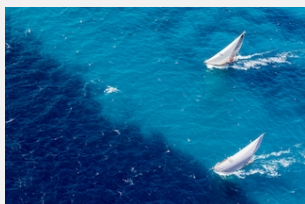
Réf.: 56_swan16cb_13107

SARDINIA'S MADDALENA ARCHIPELAGO IS ONE OF THE WORLD'S MOST RENOWNED NAUTICAL PLAYGROUNDS

Crédits photo: © Rolex/Carlo Borlenghi

Planche-contact

ROLEX SWAN CUP



Réf.: 57_swan16cb_12978

THE 36-STRONG SPARKMAN & STEPHENS CLASSIC DIVISION COMPRISES YACHTS BUILT BETWEEN 1966 AND THE EARLY 1980S

Crédits photo: © Rolex/Carlo Borlenghi



Réf.: 58_swan16cb_12955

THE LIGHTHOUSE OF CAPO FERRO WITNESSING THE PASSAGE OF THE 2016 ROLEX SWAN CUP FLEET

Crédits photo: © Rolex/Carlo Borlenghi



Réf.: 59_swan16cb_12908

THE ROLEX SWAN CUP FLEET ENJOYING CLOSE SAILING AS THEY NEGOTIATE THE WATERS OFF CAPO FERRO

Crédits photo: © Rolex/Carlo Borlenghi



Réf.: 60_swan16cb_06628

THE RECORD-BREAKING ROLEX SWAN CUP FLEET PROVIDING A COLOURFUL SPECTACLE ON DAY TWO OF RACING

Crédits photo: © Rolex/ Carlo Borlenghi



Réf.: 61_swan16cb_04863

CLOSE SAILING IN THE SWAN 45 WORLD CHAMPIONSHIP AS ESTHEC LEADS K-FORCE AND THETIS

Crédits photo: © Rolex/ Carlo Borlenghi



Réf.: 62_swan16cb_14376

SWAN 48 GOUACHE PASSING THE ISLAND OF MONACI DURING THE 2016 ROLEX SWAN CUP

Crédits photo: © Rolex/Carlo Borlenghi



Réf.: 63_swan16cb_14841

THE FOREDECK CREW OF CLUBSWAN 50 CUORDILEONE CALLED INTO ACTION AT THE 2016 ROLEX SWAN CUP

Crédits photo: © Rolex/Carlo Borlenghi



Réf.: 64_swan16cb_13392

SHAMANNA IS THE NEWEST OF THE THREE SWAN 115S COMPETING AT THE 2016 ROLEX SWAN CUP

Crédits photo: © Rolex/ Carlo Borlenghi

Planche-contact

ROLEX SWAN CUP



Réf.: 65_swan16cb_12508

CLUBSWAN 50 LADYKILLER
NEGOTIATING THE FAMOUS
EMERALD WATERS OF
NORTHEAST SARDINIA

Crédits photo: © Rolex/ Carlo
Borlenghi



Réf.: 66_swan16cb_13267

SWAN 115 HIGHLAND FLING 15
LEADING THE FLEET ON THE
THIRD DAY OF RACING

Crédits photo: © Rolex/ Carlo
Borlenghi