

版权页

# 劳力士天鹅杯

## 图片



编码: 1\_swan16cb\_24251

JAMES BLAKEMORE (L), OWNER OF MUSIC, RECEIVES A ROLEX TIMEPIECE AND THE GRAND PRIX CLASS TROPHY FROM GIAN RICCARDO MARINI

鸣谢: © Rolex/Carlo Borlenghi



编码: 2\_swan16cb\_24262

NATALIA BRAILOIU (R), OWNER OF NATALIA, RECEIVES A ROLEX TIMEPIECE AND THE SWAN 42 CLASS TROPHY FROM GIAN RICCARDO MARINI

鸣谢: © Rolex/Carlo Borlenghi



编码: 3\_swan16cb\_24313

DONALD MACPHERSON (C), OWNER OF FREYA, RECEIVES A ROLEX TIMEPIECE AND THE MAXI CLASS TROPHY FROM GIAN RICCARDO MARINI

鸣谢: © Rolex/Carlo Borlenghi



编码: 4\_swan16cb\_24288

GERARD LOGEL (R), OWNER OF AROBAS, RECEIVES A ROLEX TIMEPIECE AND THE MINI MAXI CLASS TROPHY FROM GIAN RICCARDO MARINI

鸣谢: © Rolex/Carlo Borlenghi



编码: 5\_swan16cb\_24335

CHRISTIAN PLUMP (C), OWNER OF ELENA NOVA, RECEIVES A ROLEX TIMEPIECE AND THE SWAN 45 WORLD CHAMPIONSHIP TROPHY FROM LEONARDO FERRAGAMO (L), PRINCESS ZAHRA AGA KHAN AND GIAN RICCARDO MARINI

鸣谢: © Rolex/Carlo Borlenghi



编码: 6\_swan16cb\_20200

DONALD MACPHERSON'S SWAN 90S FREYA, WINNER OF THE MAXI CLASS

鸣谢: © Rolex/ Carlo Borlenghi



编码: 7\_swan16cb\_14326

NATALIA SUCCESSFULLY DEFENDED HER TITLE IN THE CLUBSWAN 42 CLASS

鸣谢: © Rolex/Carlo Borlenghi



编码: 8\_swan16cb\_13191

JAMES BLAKEMORE'S SWAN 53 MUSIC WON ALL FOUR RACES IN THE GRAND PRIX CLASS

鸣谢: © Rolex/Carlo Borlenghi

版权页

## 劳力士天鹅杯



编码: 9\_swan16cb\_20909

CHRISTIAN PLUMP'S ELENA NOVA,  
WINNER OF THE SWAN 45 WORLD  
CHAMPIONSHIP

鸣谢: © Rolex/ Carlo Borlenghi



编码: 10\_swan16cb\_06826

GERARD LOGEL'S SWAN 601  
AROBAS, WINNER OF THE MINI  
MAXI CLASS AT THE 2016 ROLEX  
SWAN CUP

鸣谢: © Rolex/ Carlo Borlenghi



编码: 11\_swan16cb\_06671

SLEEPER X, WINNER OF THE  
SPARKMAN & STEPHENS CLASS,  
LEADING THE FLEET THROUGH  
THE MADDALENA ARCHIPELAGO

鸣谢: © Rolex/ Carlo Borlenghi



编码: 12\_swan16cb\_22581

THE SWAN MAXI CLASS IN ACTION  
DURING THE REGATTA'S  
DRAMATIC FINAL RACE

鸣谢: © Rolex/ Carlo Borlenghi



编码: 13\_swan16cb\_23213

RACING IN THE ONE-DESIGN  
SWAN 45 WORLD CHAMPIONSHIP  
WAS INTENSE AND CLOSE-  
FOUGHT

鸣谢: © Rolex/ Carlo Borlenghi



编码: 14\_swan16cb\_22736

OWNERS AND SAILORS ALIKE ARE  
DRAWN TO THE COSTA  
SMERALDA'S WORLD FAMOUS  
RACECOURSES

鸣谢: © Rolex/ Carlo Borlenghi



编码: 15\_swan16cb\_22339

THE SWAN 45 FLEET ENJOYING  
THE WINDY CONDITIONS DURING  
THE LAST RACE OF THE 2016  
ROLEX SWAN CUP

鸣谢: © Rolex/ Carlo Borlenghi



编码: 16\_swan16cb\_21142

THE SWAN 45 FLEET COMPRISED  
SIXTEEN YACHTS VYING TO BE  
CROWNED WORLD CHAMPION

鸣谢: © Rolex/ Carlo Borlenghi

版权页

# 劳力士天鹅杯



编码: 17\_swan16cb\_21512

CLOSE SAILING IS A DEFINING  
FEATURE OF THE SWAN 45  
WORLD CHAMPIONSHIP

鸣谢: © Rolex/ Carlo Borlenghi



编码: 18\_swan16cb\_15091

PERFECT SAILING CONDITIONS  
FOR CLUBSWAN 42 ORBIT/  
FARRMARMO ON THE THIRD DAY  
OF RACING

鸣谢: © Rolex/ Carlo Borlenghi



编码: 19\_swan16cb\_07296

SWAN 90 B5 PASSES THE ISLAND  
OF MORTORIO

鸣谢: © Rolex/ Carlo Borlenghi



编码: 20\_swan16cb\_14930

CLUBSWAN 50 CUORDILEONE  
RACING OFF PORTO CERVO  
DURING THE 2016 ROLEX SWAN  
CUP

鸣谢: © Rolex/ Carlo Borlenghi



编码: 21\_swan16cb\_06391

THE SWAN MAXI CLASS,  
FEATURING SELENE AND PLIS  
PLAY, IS CONTESTED BY THE  
EVENT'S LARGEST YACHTS

鸣谢: © Rolex/ Carlo Borlenghi



编码: 22\_swan16cb\_15103

CLUBSWAN 42 NATALIA WON FIVE  
OF THE OPENING SEVEN RACES  
IN HER CLASS

鸣谢: © Rolex/ Carlo Borlenghi



编码: 23\_swan16cb\_15018

THE LARGEST COMPETING CLASS  
AT THE 2016 ROLEX SWAN CUP  
COMPRISES THE 36 CLASSIC  
SPARKMAN & STEPHENS DESIGNS

鸣谢: © Rolex/ Carlo Borlenghi



编码: 24\_swan16cb\_07323

AROBAS LEADING THE FLEET OF  
MINI MAXIS ON DAY TWO OF  
RACING

鸣谢: © Rolex/ Carlo Borlenghi



版权页

# 劳力士天鹅杯



编码: 25\_swan16cb\_17211

SWAN 50 GENAPI DURING THE  
THIRD DAY OF RACING

鸣谢: © Rolex/ Carlo Borlenghi



编码: 26\_swan16cb\_16573

THE BOWMAN ON SWAN 100  
VARSOVIE PREPARING FOR THE  
NEXT TACTICAL MANEUVER

鸣谢: © Rolex/ Carlo Borlenghi



编码: 27\_swan16cb\_16072

CLOSE SAILING IN THE MAXI  
CLASS FOR PLIS PLAY, B5 AND  
FREYA

鸣谢: © Rolex/ Carlo Borlenghi



编码: 28\_swan16cb\_14492

SWAN 65 SAIDA, A SPARKMAN &  
STEPHENS DESIGN FROM  
SWITZERLAND, DURING THE  
THIRD DAY OF COMPETITION

鸣谢: © Rolex/ Carlo Borlenghi



编码: 29\_swan16cb\_15122

CLASSIC DIVISION ENTRANTS SIX  
JAGUAR AND SAIDA SAILING  
UNDER SPINNAKER

鸣谢: © Rolex/ Carlo Borlenghi



编码: 30\_swan16cb\_04209

LORD IRVINE LAIDLAW'S  
HIGHLAND FLING 15 WAS  
FASTEST AROUND THE RACE  
COURSE ON THE FIRST DAY OF  
COMPETITION

鸣谢: © Rolex/ Carlo Borlenghi



编码: 31\_swan16cb\_07465

A RECORD-BREAKING FLEET OF  
NAUTOR'S SWAN YACHTS  
NAVIGATE THE ROCKY OUTCROPS  
OF SARDINIA'S COSTA SMERALDA

鸣谢: © Rolex/ Carlo Borlenghi



编码: 32\_swan16cb\_03134

TEAMWORK TO THE FORE ON THE  
GERMAN YACHT CRILLA, ONE OF  
THE ENTRANTS IN THE GRAND  
PRIX CLASS

鸣谢: © Rolex/ Carlo Borlenghi

版权页

# 劳力士天鹅杯



编码: 33\_swan16cb\_05500

AMONG THE 36-STRONG FLEET OF CLASSIC SPARKMAN & STEPHENS DESIGNS IS THE 47-FT VANESSA

鸣谢: © Rolex/ Carlo Borlenghi



编码: 34\_swan16cb\_02551

NEWLY-LAUNCHED CLUBSWAN 50 LADYKILLER IS MAKING HER FIRST APPEARANCE ON THE COSTA SMERALDA

鸣谢: © Rolex/ Carlo Borlenghi



编码: 35\_swan16cb\_05992

THE COSTA SMERALDA'S MYRIAD OF ROCKY OUTCROPS PROVIDE NAVIGATORS WITH NUMEROUS CHALLENGES

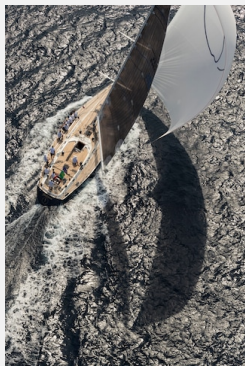
鸣谢: © Rolex/ Carlo Borlenghi



编码: 36\_swan16cb\_02310

CUORDISOLE IS ONE OF 25 YACHTS COMPETING IN THE MINI MAXI CLASS

鸣谢: © Rolex/ Carlo Borlenghi



编码: 37\_swan16cb\_02852

GAETANA'S SPINNAKER CREATES AN ALLURING SHADOW DURING THE FIRST DAY OF COMPETITION

鸣谢: © Rolex/ Carlo Borlenghi



编码: 38\_swan16cb\_04713

BOWMAN PREPARES FOR ACTION ON SWAN 70 FLYING DRAGON

鸣谢: © Rolex/ Carlo Borlenghi



编码: 39\_swan16cb\_02438

LEONARDO FERRAGAMO'S CLUBSWAN 50 CUORDILEONE ENJOYING THE CONDITIONS DURING HER DEBUT ROLEX SWAN CUP RACE

鸣谢: © Rolex/ Carlo Borlenghi



编码: 40\_swan16cb\_04479

THE MAXI CLASS, COMPRISING SWAN 80 SELENE, IS RESERVED FOR THE EVENT'S LARGEST YACHTS

鸣谢: © Rolex/ Carlo Borlenghi

版权页

## 劳力士天鹅杯



编码: 41\_swan16cb\_02226

SPINNAKER SAILING FOR MINI MAXI COMPETITORS FLYING DRAGON AND CUORDISOLE DURING THE FIRST DAY OF RACING

鸣谢: © Rolex/ Carlo Borlenghi



编码: 42\_swan16cb\_01270

CLUBSWAN 50 CUORDILEONE UNLEASHING HER POTENTIAL DURING THE FIRST DAY OF RACING

鸣谢: © Rolex/ Carlo Borlenghi



编码: 43\_swan16cb\_01541

SWAN 56 CLEM PRIMERO MAKING PROGRESS THROUGH THE MADDALENA ARCHIPELAGO

鸣谢: © Rolex/ Carlo Borlenghi



编码: 44\_swan16cb\_08589

THE SWEDISH CREW ONBOARD THE CLUBSWAN 50 LADYKILLER EXECUTING MANEUVERS DURING THE SECOND DAY OF RACING

鸣谢: © Rolex/ Carlo Borlenghi



编码: 45\_swan16cb\_06867

CUORDILEONE IS ONE OF THREE CLUBSWAN 50S GRACING THE WATERS OFF PORTO CERVO FOR THE FIRST TIME

鸣谢: © Rolex/ Carlo Borlenghi



编码: 46\_swan16cb\_06347

CLOSE SAILING CHARACTERIZES THE ROLEX SWAN CUP. HERE SELENE PURSUES RIVAL SWAN 80 PLIS PLAY

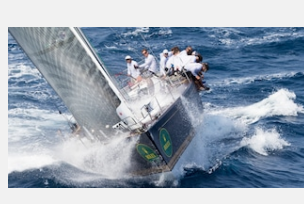
鸣谢: © Rolex/ Carlo Borlenghi



编码: 47\_swan16cb\_08834

DURING THE FIRST TWO DAYS OF COMPETITION, LORD IRVINE LAIDLAW'S HIGHLAND FLING 15 WAS THE FASTEST YACHT ON THE WATER

鸣谢: © Rolex/ Carlo Borlenghi



编码: 48\_swan16cb\_07073

SWAN 56 YASHA IS THE SOLE ENTRANT FROM ASIA AND AFTER THE SECOND DAY SHE LED THE GRAND PRIX STANDINGS

鸣谢: © Rolex/ Carlo Borlenghi



版权页

# 劳力士天鹅杯



编码: 49\_swan16cb\_01037

CLOSE COMPETITION IN THE MAXI CLASS FOR SWAN 80S SELENE AND PLIS PLAY

鸣谢: © Rolex/ Carlo Borlenghi



编码: 50\_swan16cb\_14070

THE 125-STRONG ROLEX SWAN CUP FLEET ENJOYING THE STRONG WINDS WHICH CHARACTERISED THE THIRD DAY OF RACING

鸣谢: © Rolex/Carlo Borlenghi



编码: 51\_swan16cb\_13956

A DIVERSE RANGE OF NAUTOR'S SWAN YACHTS NEGOTIATE THE WATERS AROUND THE ISLAND OF MONACI

鸣谢: © Rolex/Carlo Borlenghi



编码: 52\_swan16cb\_13864

GAETANA MAKING GOOD PROGRESS ON THE COASTAL COURSE ORGANISED ON DAY THREE OF RACING

鸣谢: © Rolex/Carlo Borlenghi



编码: 53\_swan16cb\_13491

DONALD MACPHERSON'S SWAN 90S FREYA LED THE MAXI CLASS AFTER THREE RACES

鸣谢: © Rolex/Carlo Borlenghi



编码: 54\_swan16cb\_13211

SWAN 100 VARSOVIE IS ONE OF THE LARGEST COMPETING YACHTS AT THE 2016 ROLEX SWAN CUP

鸣谢: © Rolex/Carlo Borlenghi



编码: 55\_swan16cb\_13175

MARTIN WESCOTT'S SWAN 57 EQUINOCCIO HAS TRAVELLED FROM CHILE TO COMPETE AT THE ROLEX SWAN CUP

鸣谢: © Rolex/Carlo Borlenghi



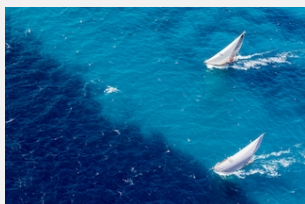
编码: 56\_swan16cb\_13107

SARDINIA'S MADDALENA ARCHIPELAGO IS ONE OF THE WORLD'S MOST RENOWNED NAUTICAL PLAYGROUNDS

鸣谢: © Rolex/Carlo Borlenghi

版权页

## 劳力士天鹅杯



编码: 57\_swan16cb\_12978

THE 36-STRONG SPARKMAN & STEPHENS CLASSIC DIVISION COMPRISES YACHTS BUILT BETWEEN 1966 AND THE EARLY 1980S

鸣谢: © Rolex/Carlo Borlenghi



编码: 58\_swan16cb\_12955

THE LIGHTHOUSE OF CAPO FERRO WITNESSING THE PASSAGE OF THE 2016 ROLEX SWAN CUP FLEET

鸣谢: © Rolex/Carlo Borlenghi



编码: 59\_swan16cb\_12908

THE ROLEX SWAN CUP FLEET ENJOYING CLOSE SAILING AS THEY NEGOTIATE THE WATERS OFF CAPO FERRO

鸣谢: © Rolex/Carlo Borlenghi



编码: 60\_swan16cb\_06628

THE RECORD-BREAKING ROLEX SWAN CUP FLEET PROVIDING A COLOURFUL SPECTACLE ON DAY TWO OF RACING

鸣谢: © Rolex/ Carlo Borlenghi



编码: 61\_swan16cb\_04863

CLOSE SAILING IN THE SWAN 45 WORLD CHAMPIONSHIP AS ESTHEC LEADS K-FORCE AND THETIS

鸣谢: © Rolex/ Carlo Borlenghi



编码: 62\_swan16cb\_14376

SWAN 48 GOUACHE PASSING THE ISLAND OF MONACI DURING THE 2016 ROLEX SWAN CUP

鸣谢: © Rolex/Carlo Borlenghi



编码: 63\_swan16cb\_14841

THE FOREDECK CREW OF CLUBSWAN 50 CUORDILEONE CALLED INTO ACTION AT THE 2016 ROLEX SWAN CUP

鸣谢: © Rolex/Carlo Borlenghi



编码: 64\_swan16cb\_13392

SHAMANNA IS THE NEWEST OF THE THREE SWAN 115S COMPETING AT THE 2016 ROLEX SWAN CUP

鸣谢: © Rolex/ Carlo Borlenghi



版权页

## 劳力士天鹅杯



编码: 65\_swan16cb\_12508

CLUBSWAN 50 LADYKILLER  
NEGOTIATING THE FAMOUS  
EMERALD WATERS OF  
NORTHEAST SARDINIA

鸣谢: © Rolex/ Carlo Borlenghi



编码: 66\_swan16cb\_13267

SWAN 115 HIGHLAND FLING 15  
LEADING THE FLEET ON THE  
THIRD DAY OF RACING

鸣谢: © Rolex/ Carlo Borlenghi