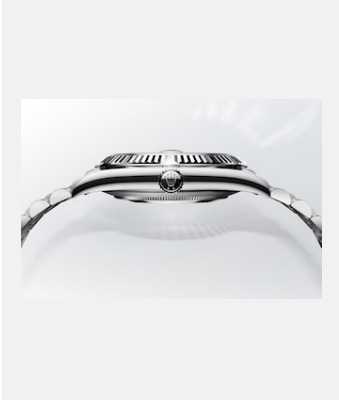


Contact sheet  
**CASE**

## OYSTER CASE



Ref: case\_2301\_003b\_rvb

Profile of an Oyster case

Credits: © Rolex/Stojan & Voumard

## HELIUM ESCAPE VALVE



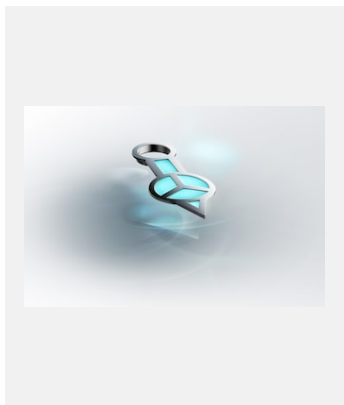
Ref: 2023-watchmaking-features-helium-valve-  
still\_digital\_master\_rgb

Helium escape valve

Credits: © Rolex/Stojan & Voumard

Contact sheet  
**CASE**

## CHROMALIGHT DISPLAY

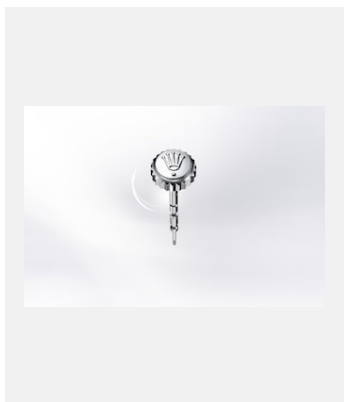


Ref: applique\_2302\_004\_rvb

Chromalight hour hand

Credits: © Rolex/Stojan & Voumard

## WINDING CROWN



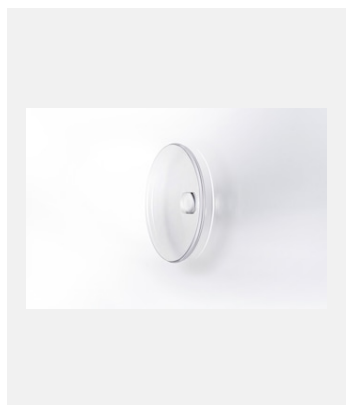
Ref: wind\_2303uf\_001

Twinlock winding crown in Oystersteel

Credits: ©Rolex/Ulysse Frechelin

Contact sheet  
**CASE**

## CYCLOP LENS



Ref: cryts\_2303uf\_001

Sapphire crystal with Cyclops lens

Credits: ©Rolex/Ulysse Frechelin

## CERACHROM BEZEL



Ref: tachymeter\_2302\_002\_rvb

Cerachrom bezel edged with band of 18 ct yellow gold, with tachymetric scale

Credits: © Rolex/Stojan & Voumard



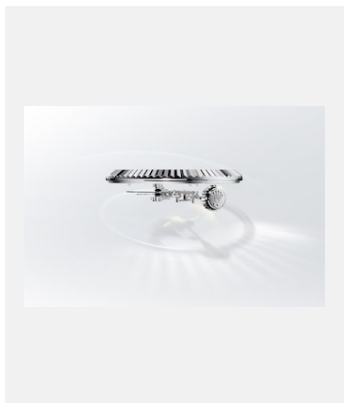
Ref: cerachrom\_2303uf\_001

Two-colour Cerachrom bezel insert of the GMT-Master II

Credits: ©Rolex/Ulysse Frechelin

Contact sheet  
**CASE**

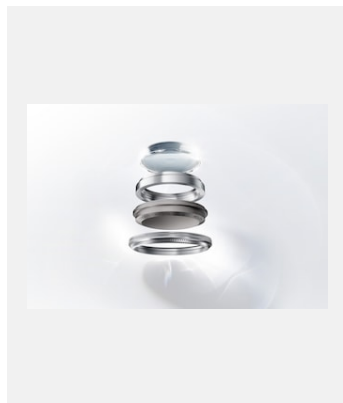
## RING COMMAND AND RINGLOCK SYSTEMS



Ref: ringcom\_2301\_003b\_rvb

The Sky-Dweller's Ring Command system

Credits: © Rolex/Stojan & Voumard



Ref: 2023-watchmaking-features-ringlock-system-still-version-b\_digital\_master\_rgb

The Rolex Deepsea's Ringlock system

Credits: © Rolex/Stojan & Voumard

## BEZEL



Ref: bez\_2301\_003b\_rvb

Fluted bezel in 18 ct yellow gold

Credits: © Rolex/Stojan & Voumard