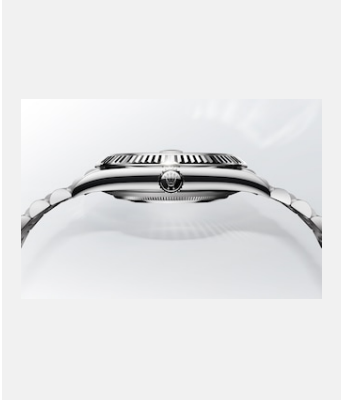


版权页
表壳

蚝式表壳



编码: case_2301_003b_rvb

蚝式表壳侧影

鸣谢: © Rolex/Stojan & Voumard

排氦阀门



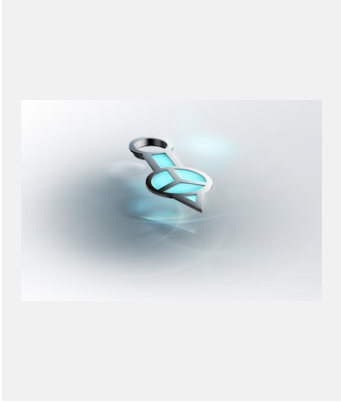
编码: 2023-watchmaking-features-helium-valve-
still_digital_master_rgb

排氦阀门

鸣谢: © Rolex/Stojan & Voumard

版权页
表壳

CHROMALIGHT夜光显示

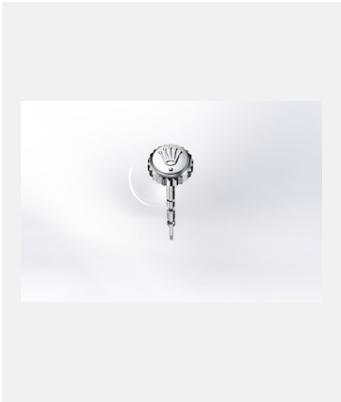


编码: applique_2302_004_rvb

Chronalight夜光时针

鸣谢: © Rolex/Stojan & Voumard

上链表冠



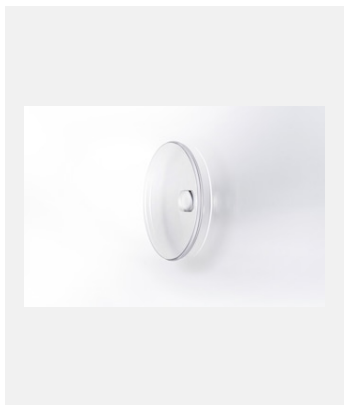
编码: wind_2303uf_001

蚝式钢双扣锁上链表冠

鸣谢: ©Rolex/Ulysse Frechelin

版权页
表壳

小窗凸透镜



编码: cryts_2303uf_001

设小窗凸透镜的蓝水晶镜面

鸣谢: ©Rolex/Ulysse Frechelin

CERACHROM外圈



编码: tachymeter_2302_002_rvb

Cerachrom测速计外圈，饰有18K黄金镶边

鸣谢: © Rolex/Stojan & Voumard



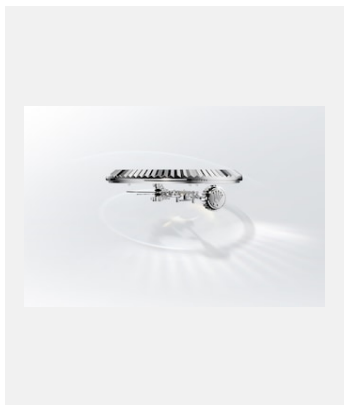
编码: cerachrom_2303uf_001

格林尼治型 II 的双色Cerachrom字圈

鸣谢: ©Rolex/Ulysse Frechelin

版权页
表壳

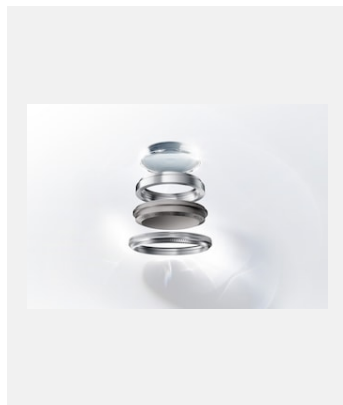
RING COMMAND及RINGLOCK系统



编码: ringcom_2301_003b_rvb

纵航者型的Ring Command系统

鸣谢: © Rolex/Stojan & Voumard



编码: 2023-watchmaking-features-ringlock-system-still-version-b_digital_master_rgb

劳力士深潜型的Ringlock系统

鸣谢: © Rolex/Stojan & Voumard

外圈



编码: bez_2301_003b_rvb

18K黄金三角坑纹外圈

鸣谢: © Rolex/Stojan & Voumard