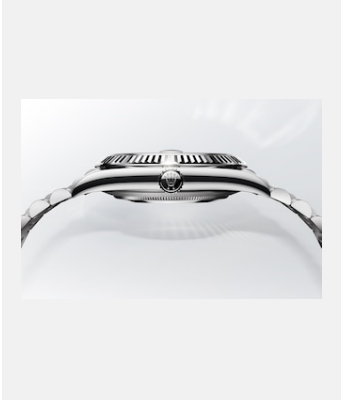


版權頁
錶殼

蠔式錶殼



編碼: case_2301_003b_rvb

蠔式錶殼側影

鳴謝: © Rolex/Stojan & Voumard

排氦閥門



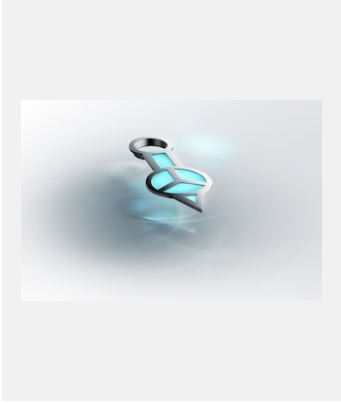
編碼: 2023-watchmaking-features-helium-valve-
still_digital_master_rgb

排氦閥門

鳴謝: © Rolex/Stojan & Voumard

版權頁
錶殼

CHROMALIGHT夜光顯示

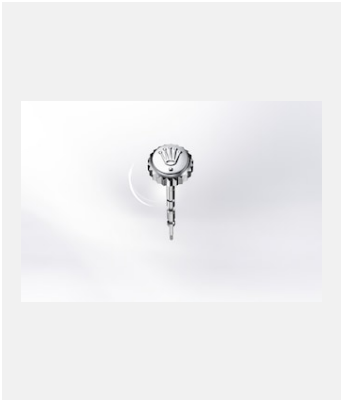


編碼: applique_2302_004_rvb

Chromalight夜光時針

鳴謝: © Rolex/Stojan & Voumard

上鏈錶冠



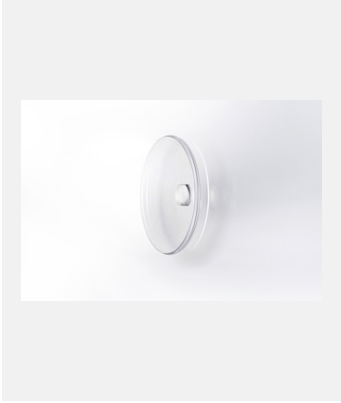
編碼: wind_2303uf_001

蠔式鋼雙扣鎖上鏈錶冠

鳴謝: ©Rolex/Ulysse Frechelin

版權頁
錶殼

小窗凸透鏡



編碼: cryts_2303uf_001

設小窗凸透鏡的藍水晶鏡面

鳴謝: ©Rolex/Ulysse Frechelin

CERACHROM外圈



編碼: tachymeter_2302_002_rvb

Cerachrom測速計外圈，飾有18K黃金鑲邊

鳴謝: © Rolex/Stojan & Voumard



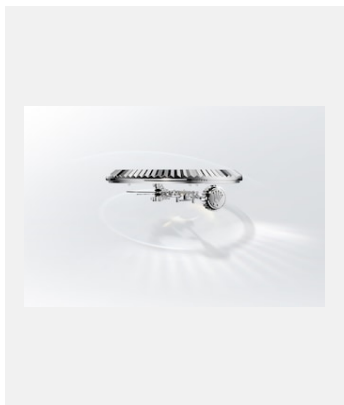
編碼: cerachrom_2303uf_001

GMT-Master II的雙色Cerachrom字圈

鳴謝: ©Rolex/Ulysse Frechelin

版權頁
錶殼

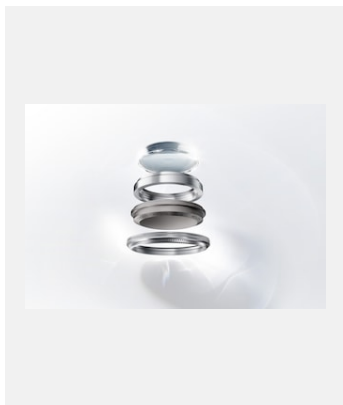
RING COMMAND及RINGLOCK系統



編碼: ringcom_2301_003b_rvb

Sky-Dweller的Ring Command系統

鳴謝: © Rolex/Stojan & Voumard



編碼: 2023-watchmaking-features-ringlock-system-still-version-b_digital_master_rgb

Rolex Deepsea的Ringlock系統

鳴謝: © Rolex/Stojan & Voumard

外圈



編碼: bez_2301_003b_rvb

18K黃金三角坑紋外圈

鳴謝: © Rolex/Stojan & Voumard