

Planche-contact

# ROLEX ET L'ARCHITECTURE

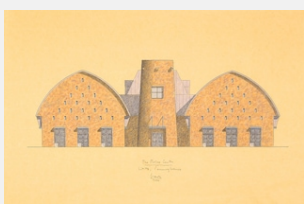
## VISUELS



Réf.: 1\_lititz-watch-technicum15hm\_004

THE LITITZ WATCH TECHNICUM, ROLEX'S WATCHMAKING SCHOOL IN PENNSYLVANIA IN THE UNITED STATES.

Crédits photo: © Rolex/Herman Mayer



Réf.: 2\_elev-sketch

THE LATE ARCHITECT MICHAEL GRAVES DESIGNED THE LITITZ WATCH TECHNICUM, ROLEX'S WATCHMAKING SCHOOL IN PENNSYLVANIA.

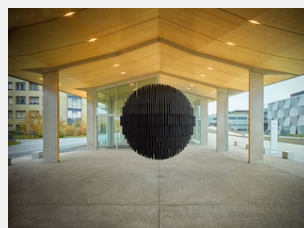
Crédits photo: © Rolex/©Courtesy of Michael Graves Architecture & Design



Réf.: 3\_kuma\_epfl\_1016\_03\_1

KENGO KUMA DESIGNED THE ARTLAB AT EPFL IN LAUSANNE. ROLEX SPONSORED AN EXHIBITION SPACE IN THE BUILDING.

Crédits photo: © Rolex/©EPFL/Michel Denancé



Réf.: 4\_cf117546

KENGO KUMA'S ARTLAB AT EPFL, WHICH IS DEDICATED TO THE INTERSECTION BETWEEN SCIENCE AND THE ARTS.

Crédits photo: © Rolex/©EPFL/Valentin Jeck



Réf.: 5\_affiliate\_usa\_dallas\_18cw037r

JAPANESE ARCHITECT KENGO KUMA DESIGNED ROLEX'S NEW BUILDING IN DALLAS, TEXAS.

Crédits photo: © Rolex/Cédric Widmer



Réf.: 6\_affiliate\_usa\_dallas\_18cw064

KENGO KUMA'S ROLEX BUILDING IN DALLAS HAS HISTORIC JAPANESE REFERENCES.

Crédits photo: © Rolex/Cédric Widmer



Réf.: 7\_edit\_rolexlearningcenterlausanne\_13\_04\_2010-679

THE ROLEX LEARNING CENTER IN LAUSANNE WAS DESIGNED BY KAZUYO SEJIMA AND RYUE NISHIZAWA OF SANAA FOR EPFL.

Crédits photo: © Rolex/©Julien Lanoo



Réf.: 8\_iae\_18ra\_0367r

THE NEW ROLEX PAVILION FOR THE 16TH INTERNATIONAL ARCHITECTURE EXHIBITION OF LA BIENNALE DI VENEZIA.

Crédits photo: © Rolex/Reto Albertalli

Planche-contact

# ROLEX ET L'ARCHITECTURE



Réf.: 9\_iae\_18ra\_002

THE NEW ROLEX PAVILION FOR THE 16TH INTERNATIONAL ARCHITECTURE EXHIBITION OF LA BIENNALE DI VENEZIA.

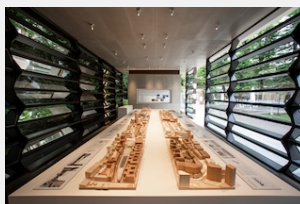
Crédits photo: © Rolex/Reto Albertalli



Réf.: 10\_iae\_18ra\_004

THE NEW ROLEX PAVILION FOR THE 16TH INTERNATIONAL ARCHITECTURE EXHIBITION OF LA BIENNALE DI VENEZIA.

Crédits photo: © Rolex/Reto Albertalli



Réf.: 11\_iae\_18ra\_003

THE NEW ROLEX PAVILION FOR THE 16TH INTERNATIONAL ARCHITECTURE EXHIBITION OF LA BIENNALE DI VENEZIA.

Crédits photo: © Rolex/Reto Albertalli



Réf.: 12\_rmp8a\_fm007r

SIR DAVID CHIPPERFIELD, ROLEX MENTOR IN ARCHITECTURE 2016-2017.

Crédits photo: © Rolex/Tina Ruisinger



Réf.: 13\_rmp8a\_f037r

SWISS ARCHITECT SIMON KRETZ, ROLEX PROTEGE IN ARCHITECTURE IN 2016-2017.

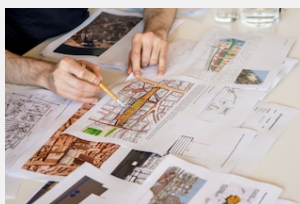
Crédits photo: © Rolex/Tina Ruisinger



Réf.: 14\_rmp8\_a\_dchipperfieldskretz\_1703tr\_210

SIR DAVID CHIPPERFIELD, ROLEX MENTOR IN ARCHITECTURE 2016-2017, WITH HIS SWISS PROTEGE SIMON KRETZ.

Crédits photo: © Rolex/Tina Ruisinger



Réf.: 15\_rmp8\_a\_dchipperfieldskretz\_1703tr\_199\_r

SKETCHING PLANS FOR THE BISHOPSGATE GOODSYARD SITE IN SHOREDITCH, LONDON.

Crédits photo: © Rolex/Tina Ruisinger



Réf.: 16\_image\_2

SIMON KRETZ'S STUDENTS AT ETH ZURICH (SWISS FEDERAL INSTITUTE OF TECHNOLOGY) CREATED ALTERNATIVE MODELS OF DEVELOPMENT FOR THE BISHOPSGATE GOODSYARD.

Crédits photo: © Rolex/©Institute for Urban Design, ETH Zürich

Planche-contact

# ROLEX ET L'ARCHITECTURE



Réf.: 17\_image\_5

A MAP OF LONDON USED BY SIMON KRETZ AND SIR DAVID CHIPPERFIELD.

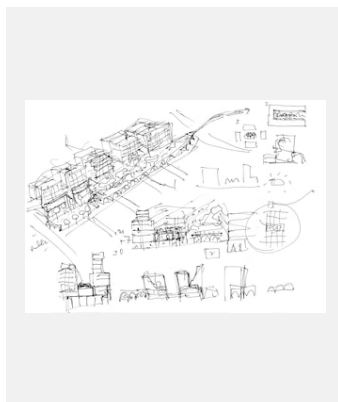
Crédits photo: © Rolex/©Institute for Urban Design, ETH Zürich



Réf.: 18\_rmp8\_a\_dchipperfieldskretz\_1703tr\_051

SIMON KRETZ (CENTRE) VISITED THE SITE OF THE BISHOPSGATE GOODSYARD IN SHOREDITCH, LONDON.

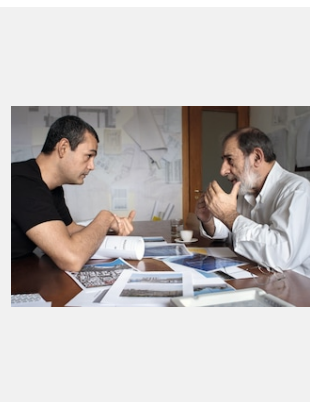
Crédits photo: © Rolex/Tina Ruisinger



Réf.: 19\_image\_11

A SKETCH OF LONDON PRODUCED DURING SIR DAVID CHIPPERFIELD'S AND SIMON KRETZ'S WORK.

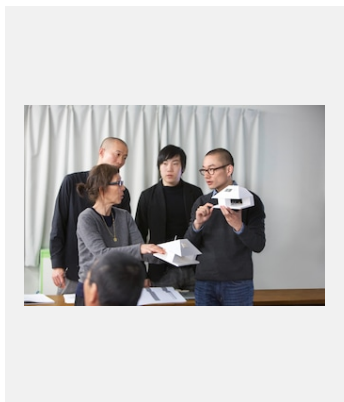
Crédits photo: © Rolex/©Simon Kretz and David Chipperfield



Réf.: 20\_rmp1va\_5769\_r

THE MENTOR AND PROTEGE IN ARCHITECTURE IN 2002–2003 WERE PORTUGUESE ARCHITECT ÁLVARO SIZA (PORTUGAL) AND SAHEL AL HIYARI (JORDAN).

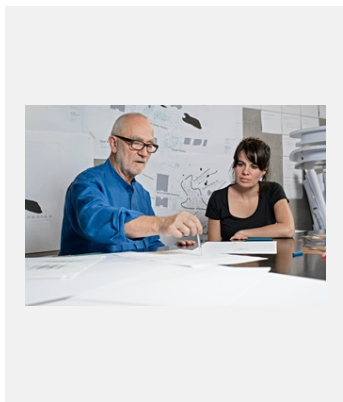
Crédits photo: © Rolex/©Tomas Bertelsen



Réf.: 21\_rmp6a1304\_02-012\_rvb

KAZUYO SEJIMA WITH HER PROTEGE YANG ZHAO (FAR RIGHT) FROM CHINA. IN 2012–2013 SEJIMA ASKED HIM TO DESIGN A COMMUNAL GATHERING PLACE THAT WAS PART OF HOME-FOR-ALL, A PROJECT CREATED BY JAPANESE ARCHITECTS AFTER THE 2011 TSUNAMI.

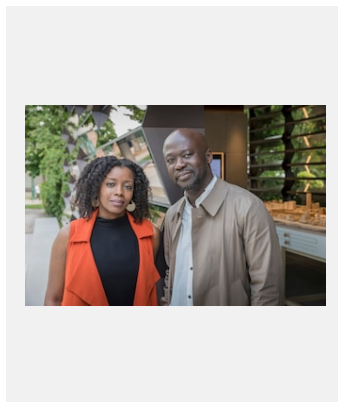
Crédits photo: © Rolex/Hideki Shiozawa



Réf.: 22\_rmp7a1411\_02-084r

GLORIA CABRAL FROM PARAGUAY SPENT SEVERAL MONTHS IN 2014–2015 WITH PETER ZUMTHOR IN SWITZERLAND, WHERE SHE WORKED ON A DESIGN FOR A TEA CHAPEL IN SEOUL.

Crédits photo: © Rolex/Marc Latzel



Réf.: 23\_iae\_18ra\_0444

PRESENTATION OF THE ROLEX PAVILION. SIR DAVID ADJAYE, MENTOR CYCLE 9A, MARIAM KAMARA, PROTEGÉE CYCLE 9A.

Crédits photo: © Rolex/Reto Albertalli



Réf.: 24\_rmp9a\_fm018

LEADING GHANAIAN-BRITISH ARCHITECT SIR DAVID ADJAYE.

Crédits photo: © Rolex/Tina Ruisinger

Planche-contact

# ROLEX ET L'ARCHITECTURE



Réf.: 25\_10236-28r

SIR DAVID ADJAYE'S AWARD-WINNING DESIGN FOR THE NATIONAL MUSEUM OF AFRICAN HISTORY AND CULTURE IN WASHINGTON DC.

Crédits photo: © Rolex/©Brad Feinknopf



Réf.: 26\_rmp9a\_f089\_r

MARIAM KAMARA, FROM NIGER, IS THE 2018-2019 PROTEGEE IN ARCHITECTURE.

Crédits photo: © Rolex/Tina Ruisinger



Réf.: 27\_east-entryunited4design\_ateliermasomi

MARIAM KAMARA'S COLLABORATIVE DESIGN FOR A HOUSING DEVELOPMENT IN NIAMEY, NIGER.

Crédits photo: © Rolex/©united4design