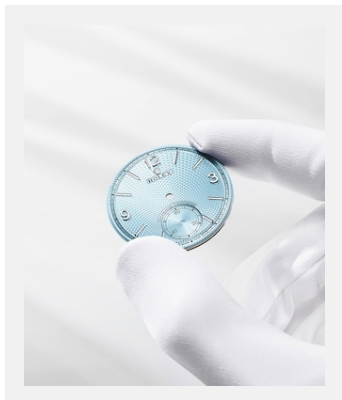


Contact sheet
DIALS

GALLERY



Ref: newsroom-dial-wmdial_2401uf_001

At Rolex, ice blue dials are reserved exclusively for models in 950 platinum. This ice blue dial (Perpetual 1908) features a guilloché rice-grain motif

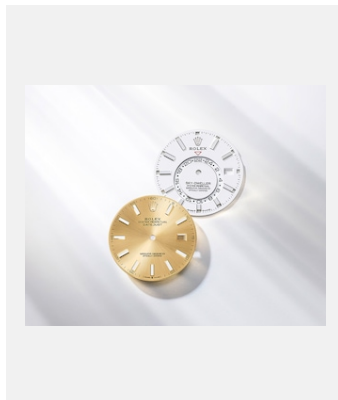
Credits: © Rolex



Ref: newsroom-dial-wmdial_2401uf_002

Lacquering is used predominantly to create deep or intense colours such as blue (GMT-Master II and Rolex Deepsea)

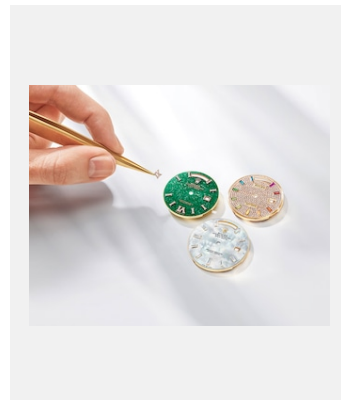
Credits: © Rolex



Ref: newsroom-dial-wmdial_2401uf_003

Index hour markers and numerals can also be filled with luminescent material so that the time can be read in the dark (Sky-Dweller and Datejust)

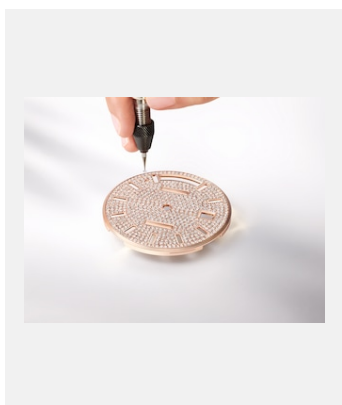
Credits: © Rolex



Ref: newsroom-dial-wmdial_2401uf_004

Rolex dials that can be made from natural materials, including green aventurine, mother-of-pearl, or diamond paved (Day-Date 36)

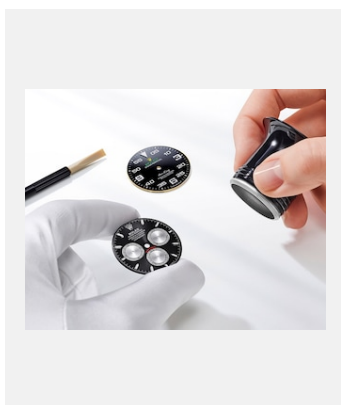
Credits: © Rolex



Ref: wmgemsetting_2309uf_002

Hand-setting an 18 ct Everose gold dial with diamonds

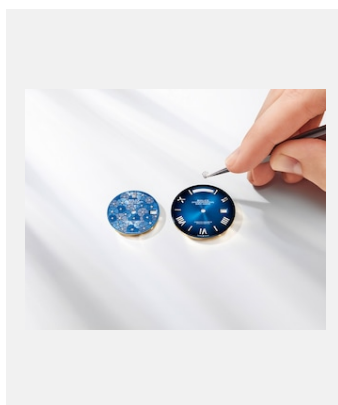
Credits: © Rolex



Ref: newsroom-dial-wmdial_2401uf_005

Bright black and steel dial with contrasting counters (Cosmograph Daytona) and black dial with large 3, 6 and 9 hour markers and a prominent minutes scale (Air-King)

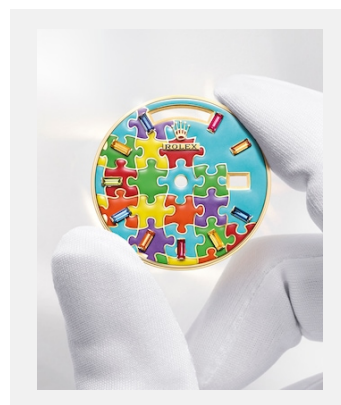
Credits: © Rolex



Ref: newsroom-dial-wmdial_2401uf_006r

Blue floral-motif dial (Datejust 31) and ombré dial (Day-Date 40). At the last stage the process, the appliques – hour markers and Rolex crown – are attached to the dial by hand

Credits: © Rolex



Ref: wmdial_2309uf_001

Dial with motif made using the champlevé method of grand feu enamelling (Day-Date 36)

Credits: ©Rolex/Ulysse Fréchélin

Contact sheet

DIALS



Ref: wmdial_2309uf_002

Turquoise blue and candy pink lacquer dials (Oyster Perpetual 36)

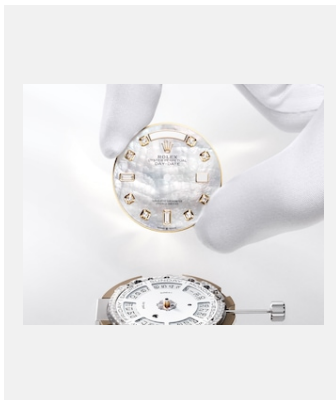
Credits: ©Rolex/Ulysse Fréchélin



Ref: wmdial_2309uf_003

Green lacquer dial with faceted, deconstructed Roman numerals and faceted index hour markers (Day-Date 40) and black lacquer dial (Air-King)

Credits: ©Rolex/Ulysse Fréchélin



Ref: wmdial_2309uf_004

Pearlized white mother-of-pearl dial, diamond-set hour markers (Day-Date 36)

Credits: ©Rolex/Ulysse Fréchélin



Ref: wmdial_2309uf_005

Bright black dial with Sundust counters (Cosmograph Daytona) and champagne-colour dial with faceted, deconstructed Roman numerals and faceted index hour markers (Day-Date 40)

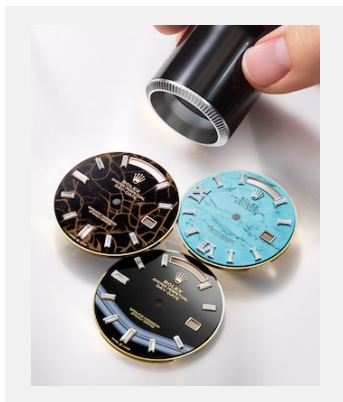
Credits: ©Rolex/Ulysse Fréchélin



Ref: wmdial_2309uf_006

Mint green dial with 24-hour disc (Sky-Dweller)

Credits: ©Rolex/Ulysse Fréchélin



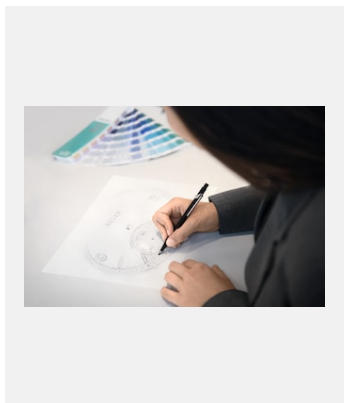
Ref: wmdial_2309uf_007

Dials in decorative stone: eisenkiesel (Day-Date 40), onyx (Day-Date 40) and turquoise (Day-Date 36)

Credits: ©Rolex/Ulysse Fréchélin

Contact sheet
DIALS

DIAL-MAKING



Ref: wmkdesign_2024pd_048

Sketching the dial of the Perpetual 1908 in 950 platinum

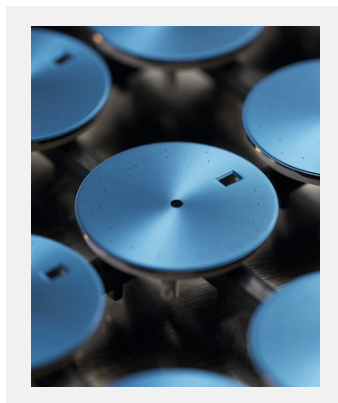
Credits: ©Rolex/François Lacour



Ref: couleur_13cw_003

Sample of lacquer used to colour the dials

Credits: © Rolex/Cédric Widmer



Ref: wmdial_21cw_006

Dial with sunray finish after colouring via PVD (Physical Vapour Deposition)

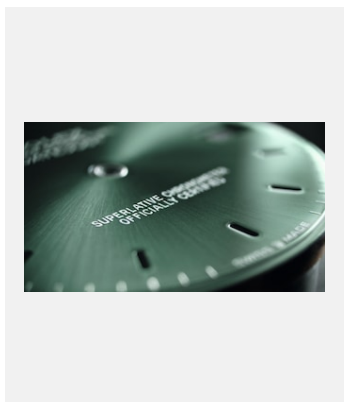
Credits: © Rolex/Cédric Widmer



Ref: wmdial_2201fl_007

Testing for the right shade of lacquer according to the sketches created by the Design Department

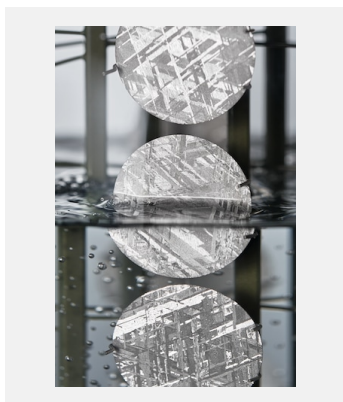
Credits: ©Rolex/François Lacour



Ref: wmdial_2301jb_0002

The sunray finish is characterized by extremely fine lines radiating out from the centre of the dial's surface

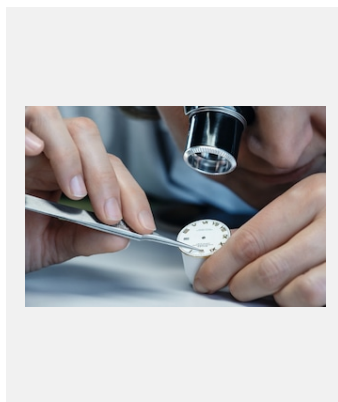
Credits: ©Rolex/Juriaan Booij



Ref: wmdial_m116519ln-038-0065

Meteorite dials during electroplating

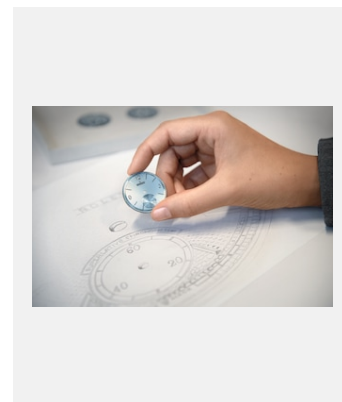
Credits: © Rolex/Cédric Widmer



Ref: wmdial_2201fl_009

Fitting the Rolex crown applique on a dial by hand

Credits: ©Rolex/François Lacour



Ref: wmkdesign_2024pd_063

The dial of the Perpetual 1908 in 950 platinum with its sketch

Credits: ©Rolex/François Lacour