

版權頁

LAND-DWELLER

檔案

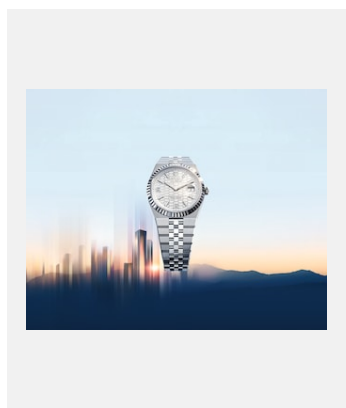


編碼: rolex-media-brochure_empty

Land-Dweller – 腕錶展示

鳴謝: © Rolex

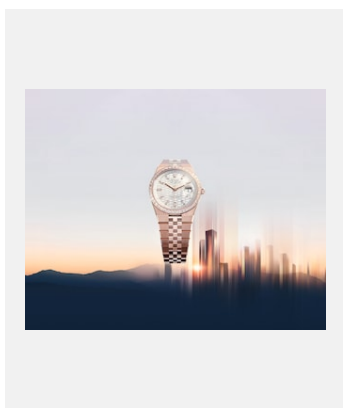
圖片集



編碼: m127334-0001_2501fj_001

白色黃金鋼款Land-Dweller 40的透明錶殼底蓋

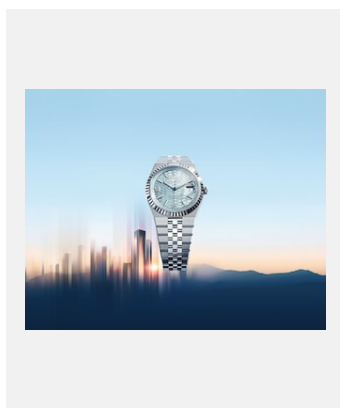
鳴謝: © Rolex/Florian Joye



編碼: m127285tbr-0002_2501fj_001

Oyster Perpetual Land-Dweller 36，18K永恒玫瑰金款

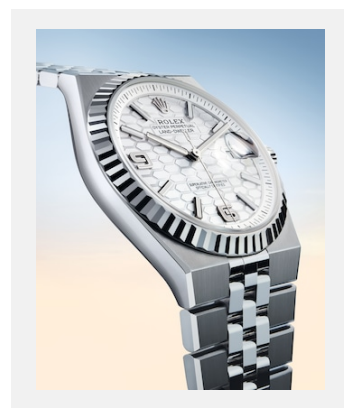
鳴謝: © Rolex/Florian Joye



編碼: m127336-0001_2501fj_001

Oyster Perpetual Land-Dweller 40，950鉑金款

鳴謝: © Rolex/Florian Joye



編碼: m127334-0001_2501fj_004

白色黃金鋼款Land-Dweller 40的透明錶殼底蓋

鳴謝: © Rolex/Florian Joye

版權頁

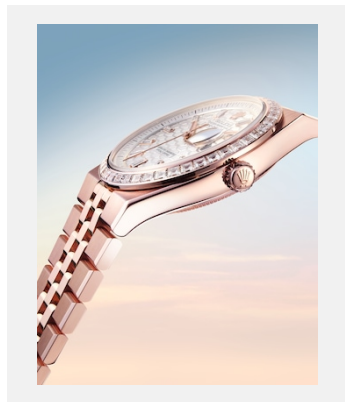
LAND-DWELLER



編碼: m127334-0001_2501fj_002

白色黃金鋼款Land-Dweller 40的透明錶殼底蓋

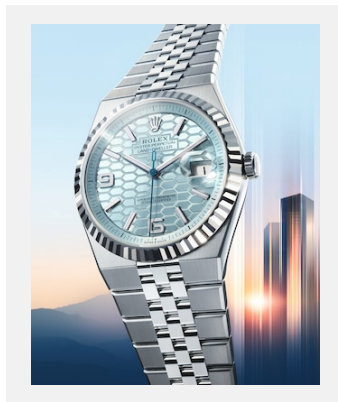
鳴謝: © Rolex/Florian Joye



編碼: m127285tbr-0002_2501fj_004

Oyster Perpetual Land-Dweller 36，18K永恒玫瑰金款

鳴謝: © Rolex/Florian Joye

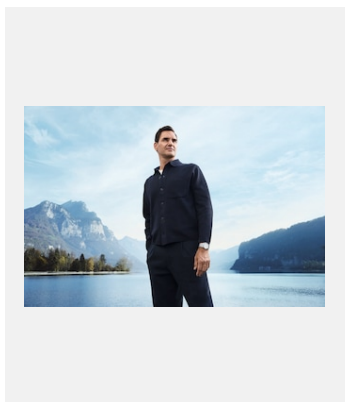


編碼: m127336-0001-_2501fj_003

Oyster Perpetual Land-Dweller 40，950鉑金款

鳴謝: © Rolex/Florian Joye

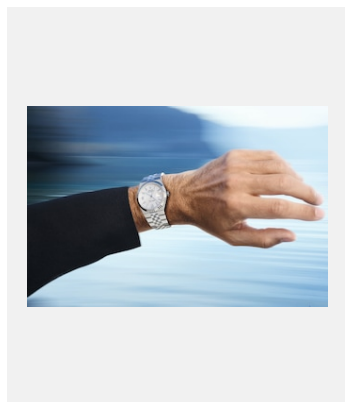
羅傑・費達拿



編碼: rfederer_2411ab_1

羅傑・費達拿 (Roger Federer) 佩戴著白色黃金鋼款Land-Dweller 40腕錶

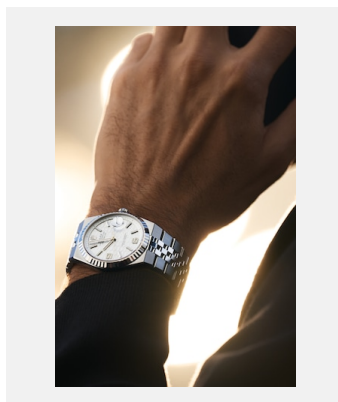
鳴謝: © Rolex/Anthony Blasko



編碼: rfederer_2411ab_7

羅傑・費達拿 (Roger Federer) 佩戴著白色黃金鋼款Land-Dweller 40腕錶

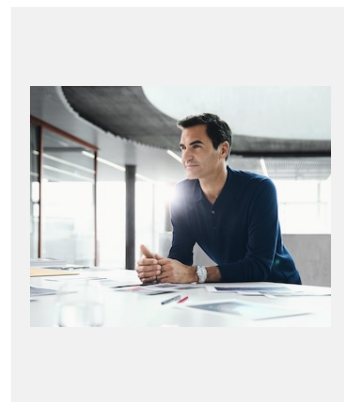
鳴謝: © Rolex/Anthony Blasko



編碼: rfederer_2411ab_s

羅傑・費達拿 (Roger Federer) 佩戴著白色黃金鋼款Land-Dweller 40腕錶

鳴謝: © Rolex/Anthony Blasko



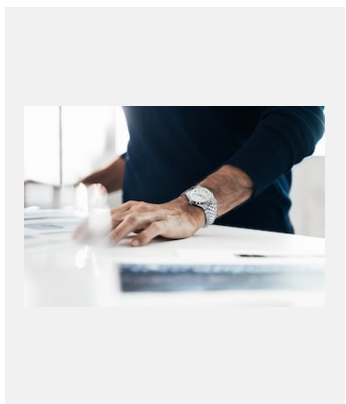
編碼: rfederer_2411ab_3

羅傑・費達拿 (Roger Federer) 佩戴著白色黃金鋼款Land-Dweller 40腕錶

鳴謝: © Rolex/Anthony Blasko

版權頁

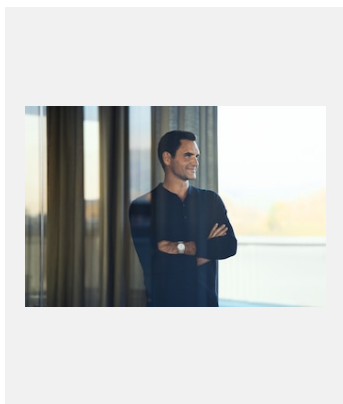
LAND-DWELLER



編碼: rfederer_2411ab_2

羅傑・費達拿 (Roger Federer) 佩戴著白色黃金鋼款Land-Dweller 40腕錶

鳴謝: © Rolex/Anthony Blasko

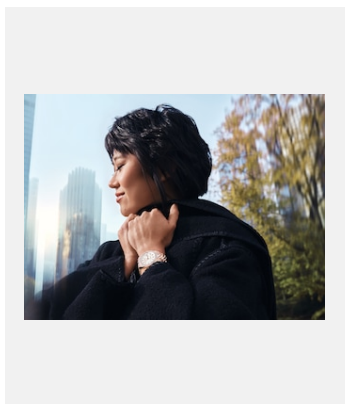


編碼: rfederer_2411ab_8

羅傑・費達拿 (Roger Federer) 佩戴著白色黃金鋼款Land-Dweller 40腕錶

鳴謝: © Rolex/Anthony Blasko

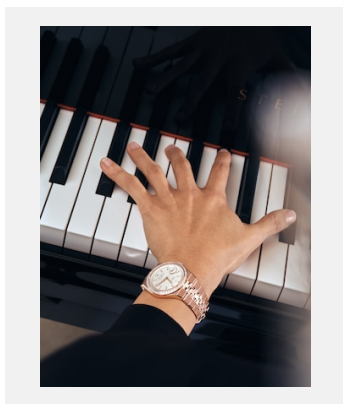
羅傑・費達拿



編碼: ywang_2412rp_2

王羽佳佩戴著18K永恒玫瑰金款Land-Dweller 36腕錶，搭配鑲鑽外圈。

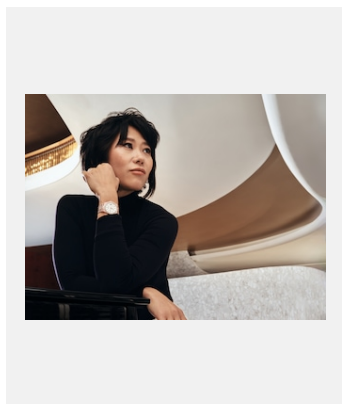
鳴謝: © Rolex/Rory Payne



編碼: ywang_2412rp_10

王羽佳佩戴著18K永恒玫瑰金款Land-Dweller 36腕錶，搭配鑲鑽外圈。

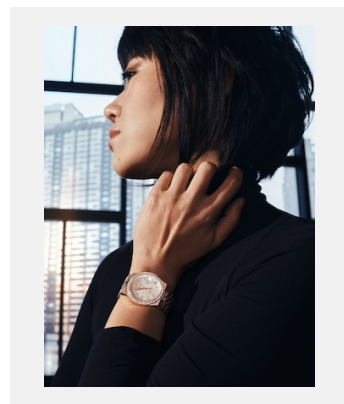
鳴謝: © Rolex/Rory Payne



編碼: ywang_2412rp_9

王羽佳佩戴著18K永恒玫瑰金款Land-Dweller 36腕錶，搭配鑲鑽外圈。

鳴謝: © Rolex/Rory Payne



編碼: ywang_2412rp_7

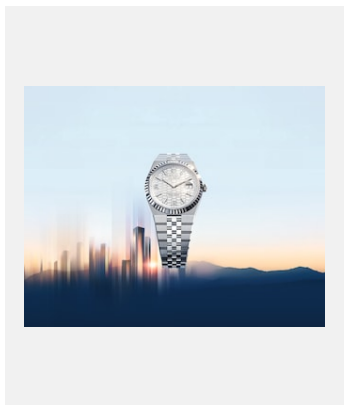
王羽佳佩戴著18K永恒玫瑰金款Land-Dweller 36腕錶，搭配鑲鑽外圈。

鳴謝: © Rolex/Rory Payne

版權頁

LAND-DWELLER

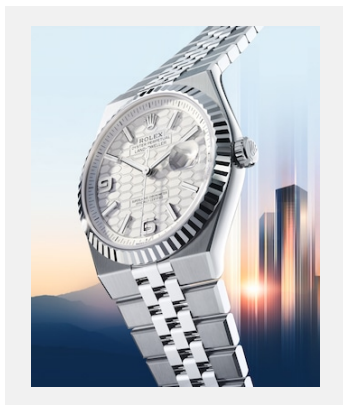
圖片



編碼: m127334-0001_2501fj_001

Oyster Perpetual Land-Dweller 40 ,
白色黃金鋼款

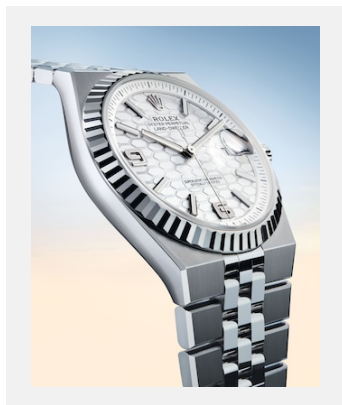
鳴謝: © Rolex/Florian Joye



編碼: m127334-0001_2501fj_003

Oyster Perpetual Land-Dweller 40 ,
白色黃金鋼款

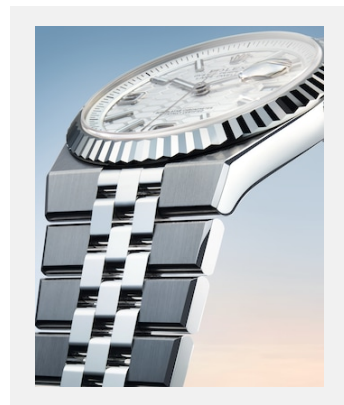
鳴謝: © Rolex/Florian Joye



編碼: m127334-0001_2501fj_004

Oyster Perpetual Land-Dweller 40 ,
白色黃金鋼款

鳴謝: © Rolex/Florian Joye



編碼: m127334-0001_2501fj_006

Oyster Perpetual Land-Dweller 40 ,
白色黃金鋼款

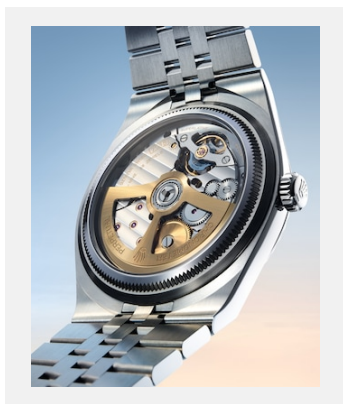
鳴謝: © Rolex/Florian Joye



編碼: m127334-0001_2501fj_002

Oyster Perpetual Land-Dweller 40 ,
白色黃金鋼款

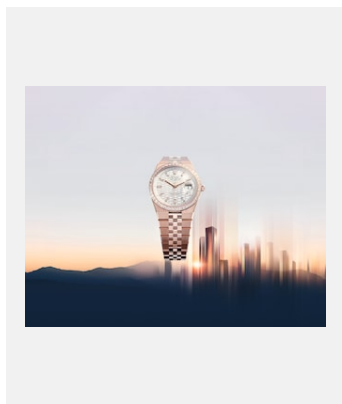
鳴謝: © Rolex/Florian Joye



編碼: m127334-0001_2501fj_007

白色黃金鋼款Land-Dweller 40的透明
錶殼底蓋

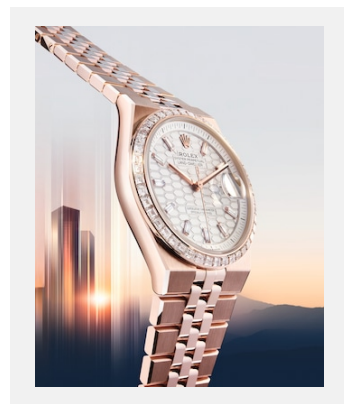
鳴謝: © Rolex/Florian Joye



編碼: m127285tbr-0002_2501fj_001

Oyster Perpetual Land-Dweller 36 ,
18K永恒玫瑰金款

鳴謝: © Rolex/Florian Joye



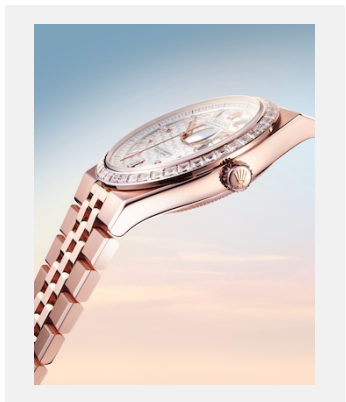
編碼: m127285tbr-0002_2501fj_003

Oyster Perpetual Land-Dweller 36 ,
18K永恒玫瑰金款

鳴謝: © Rolex/Florian Joye

版權頁

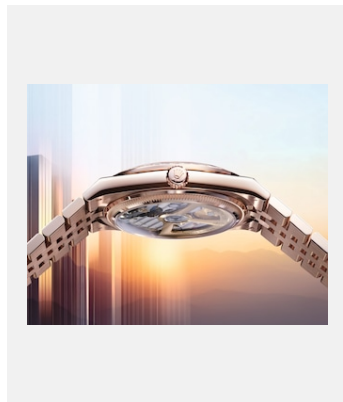
LAND-DWELLER



編碼: m127285tbr-0002_2501fj_004

Oyster Perpetual Land-Dweller 36 ,
18K永恒玫瑰金款

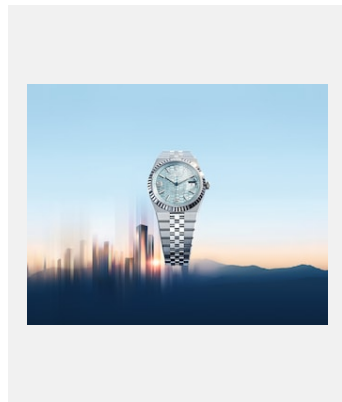
鳴謝: © Rolex/Florian Joye



編碼: m127285tbr-0002_2501fj_002

Oyster Perpetual Land-Dweller 36 ,
18K永恒玫瑰金款

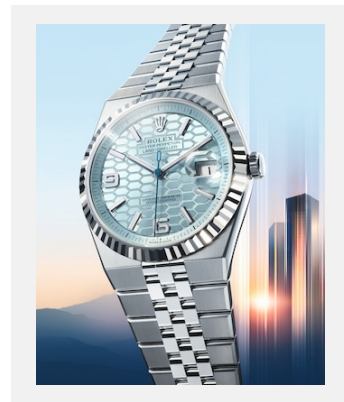
鳴謝: © Rolex/Florian Joye



編碼: m127336-0001-_2501fj_001

Oyster Perpetual Land-Dweller 40 ,
950鉑金款

鳴謝: © Rolex/Florian Joye



編碼: m127336-0001-_2501fj_003

Oyster Perpetual Land-Dweller 40 ,
950鉑金款

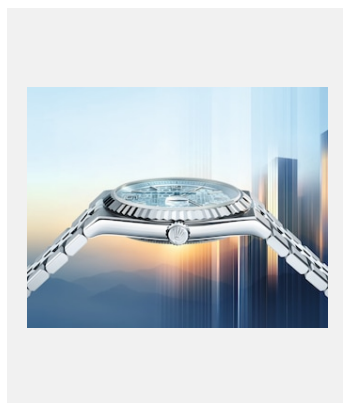
鳴謝: © Rolex/Florian Joye



編碼: m127336-0001-_2501fj_004

950鉑金款Land-Dweller 40的藍色秒針
特寫

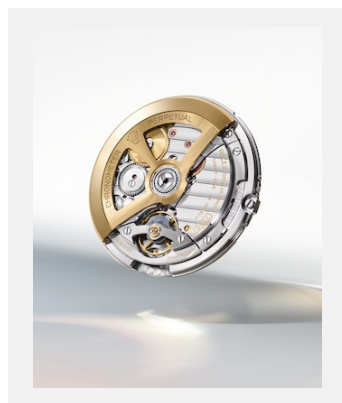
鳴謝: © Rolex/Florian Joye



編碼: m127336-0001-_2501fj_002

Oyster Perpetual Land-Dweller 40 ,
950鉑金款

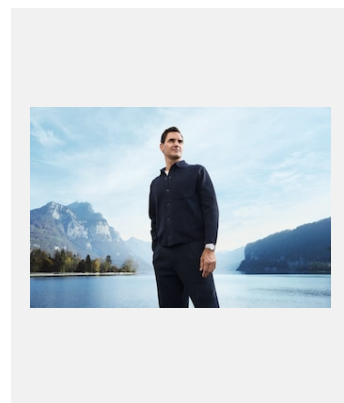
鳴謝: © Rolex/Florian Joye



編碼: movt7135l_2411uf_002

7135型機芯

鳴謝: ©Rolex/Ulysse Frechelin



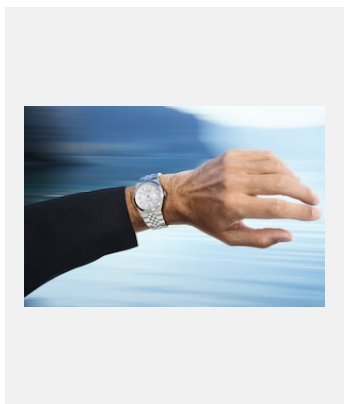
編碼: rfederer_2411ab_1

羅傑・費達拿 (Roger Federer) 佩戴
著白色黃金鋼款Land-Dweller 40腕
錶。

鳴謝: © Rolex/Anthony Blasko

版權頁

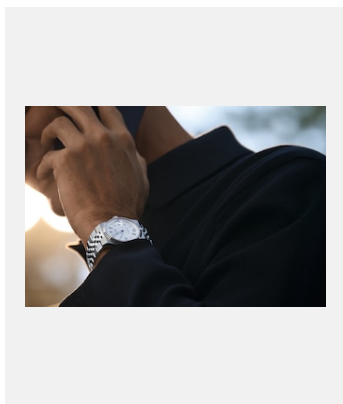
LAND-DWELLER



編碼: rfederer_2411ab_7

羅傑・費達拿 (Roger Federer) 佩戴著白色黃金鋼款Land-Dweller 40腕錶。

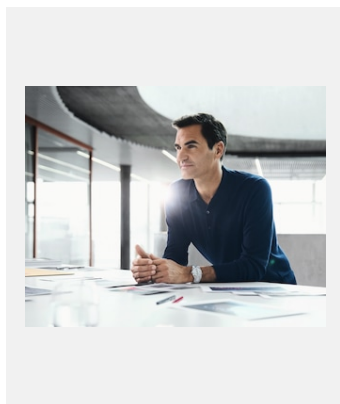
鳴謝: © Rolex/Anthony Blasko



編碼: rfederer_2411ab_4

羅傑・費達拿 (Roger Federer) 佩戴著白色黃金鋼款Land-Dweller 40腕錶。

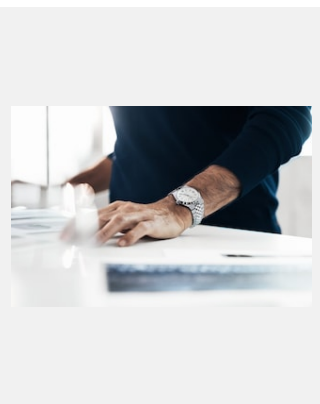
鳴謝: © Rolex/Anthony Blasko



編碼: rfederer_2411ab_3

羅傑・費達拿 (Roger Federer) 佩戴著白色黃金鋼款Land-Dweller 40腕錶。

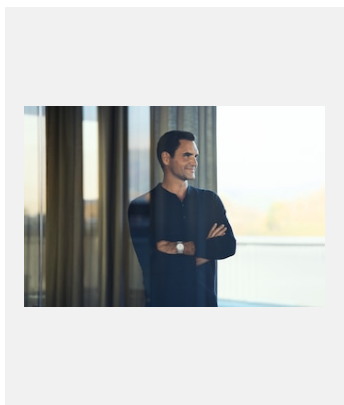
鳴謝: © Rolex/Anthony Blasko



編碼: rfederer_2411ab_2

羅傑・費達拿 (Roger Federer) 佩戴著白色黃金鋼款Land-Dweller 40腕錶。

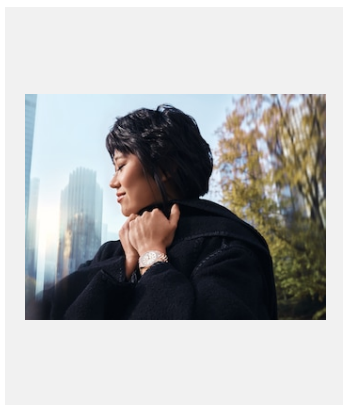
鳴謝: © Rolex/Anthony Blasko



編碼: rfederer_2411ab_8

羅傑・費達拿 (Roger Federer) 佩戴著白色黃金鋼款Land-Dweller 40腕錶。

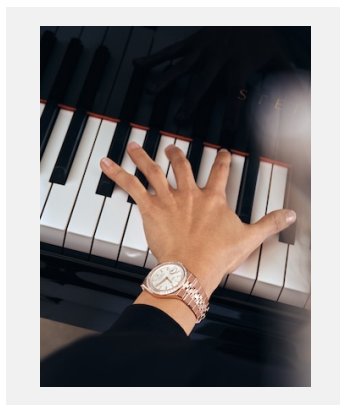
鳴謝: © Rolex/Anthony Blasko



編碼: ywang_2412rp_2

王羽佳佩戴著18K永恒玫瑰金款Land-Dweller 36腕錶，搭配鑲鑽外圈。

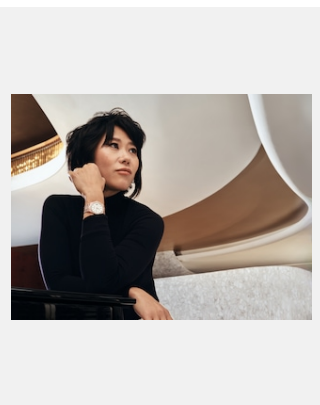
鳴謝: © Rolex/Rory Payne



編碼: ywang_2412rp_10

王羽佳佩戴著18K永恒玫瑰金款Land-Dweller 36腕錶，搭配鑲鑽外圈。

鳴謝: © Rolex/Rory Payne



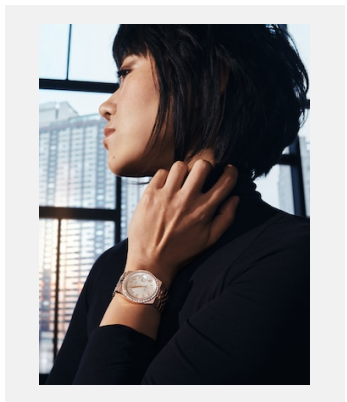
編碼: ywang_2412rp_9

王羽佳佩戴著18K永恒玫瑰金款Land-Dweller 36腕錶，搭配鑲鑽外圈。

鳴謝: © Rolex/Rory Payne

版權頁

LAND-DWELLER



編碼: ywang_2412rp_7

王羽佳佩戴著18K永恒玫瑰金款Land-Dweller 36腕錶，搭配鑲鑽外圈。

鳴謝: © Rolex/Rory Payne



編碼: 1969_first_rolex_quartz_cmyk

勞力士石英腕錶，1969

鳴謝: © Rolex

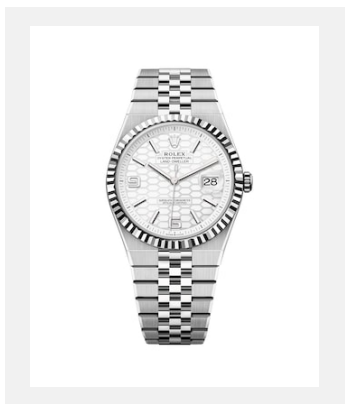


編碼: 1974_oyster_cmyk

Oyster Perpetual Datejust，1974

鳴謝: © Rolex

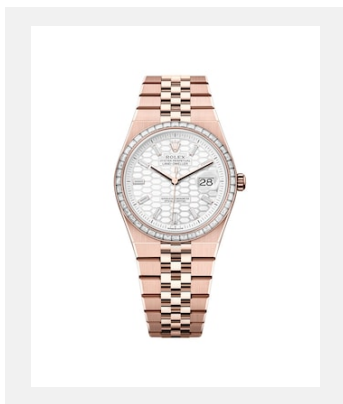
錶款



編碼: m127334-0001

Land-Dweller 40

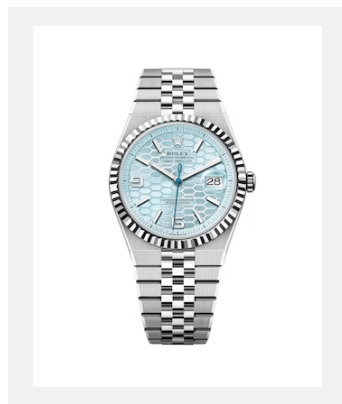
鳴謝: © Rolex



編碼: m127285tbr-0002

Land-Dweller 36

鳴謝: © Rolex



編碼: m127336-0001

Land-Dweller 40

鳴謝: © Rolex

版權頁

LAND-DWELLER

影片



編碼: dynapulse_2025-np-lancia-solar-film-28_16x9_thumbnail

動態脈衝擒縱系統 - 30秒短片

鳴謝: © Rolex



編碼: ceramic_balance_staff_2025-np-lancia-fusee-film-20_16x9_thumbnail

陶瓷擺輪軸，7135型機芯 - 20秒短片

鳴謝: © Rolex



編碼: syloxi_2025-np-lancia-syloxi-film-16_16x9_thumbnail

Syloxi矽游絲，7135型機芯 - 15秒短片

鳴謝: © Rolex



編碼: paraflex_2025-np-lancia-paraflex-film-15_16x9_thumbnail

Paraflex緩震裝置 - 15秒短片

鳴謝: © Rolex



編碼: bracelet_2025-np-lancia-serpico-film-20_16x9_thumbnails

纖薄紀念型錶帶 - 20秒短片

鳴謝: © Rolex