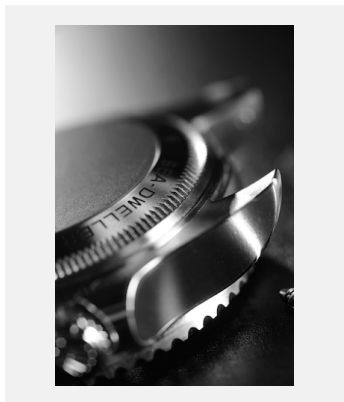


Kontaktabzug  
**GEHÄUSE**

**OYSTER-GEHÄUSE**



Ref.: bracelet-04

Oyster-Gehäuse

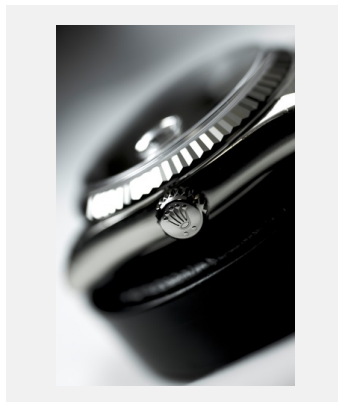
Foto: ©Rolex/Thierry Parel



Ref.: elmt\_1611jva\_001

Oyster-Gehäuse

Foto: ©Rolex/Joël von Allmen

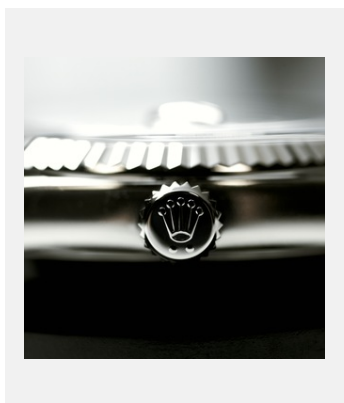


Ref.: sav\_10jdm\_040

Oyster-Gehäuse

Foto: ©Rolex/Jean-Daniel Meyer

**AUFZUGSKRONE**



Ref.: rolex\_atelier\_o5a5991

Aufzugskrone

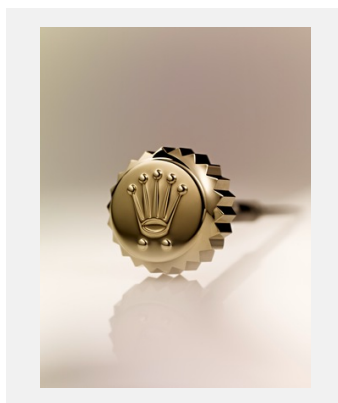
Foto: ©Rolex/Jean-Daniel Meyer



Ref.: couronne-remontoir\_13jdm\_001

Aufzugskrone

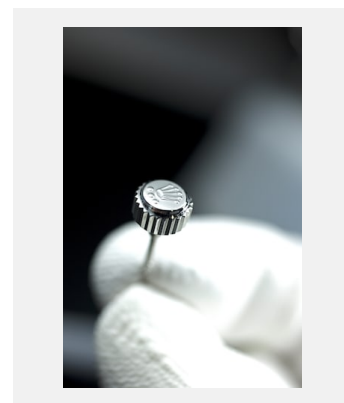
Foto: ©Rolex/Jean-Daniel Meyer



Ref.: couronne-remontoir\_13jdm\_002

Aufzugskrone

Foto: ©Rolex/Jean-Daniel Meyer



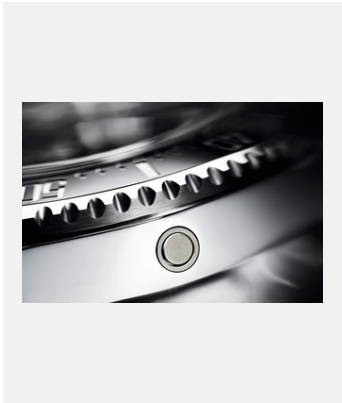
Ref.: sav\_10jdm\_030

Aufzugskrone

Foto: ©Rolex/Jean-Daniel Meyer

Kontaktabzug  
**GEHÄUSE**

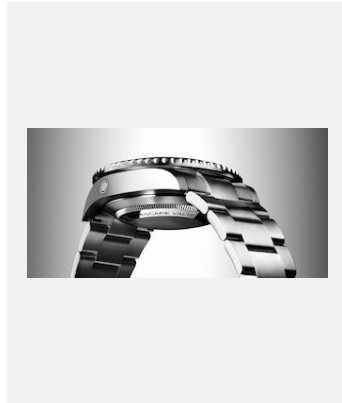
**HELIUMVENTIL**



Ref.: m126600-0001\_1701ac\_007-new

Heliumventil

Foto: ©Alain Costa



Ref.: m126600-0001\_1701ac\_004\_press

Heliumventil

Foto: ©Alain Costa

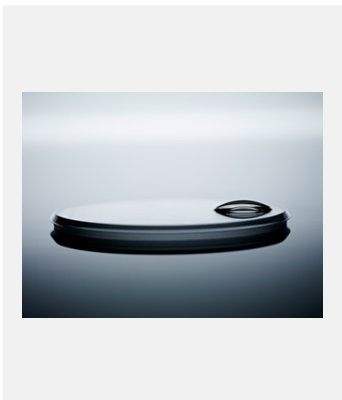


Ref.: m126600-0001\_1701ac\_010-1

Heliumventil

Foto: ©Alain Costa

**ZYKLOPLUPE**



Ref.: cyclope\_13jdm\_006

Zykloplupe

Foto: ©Rolex/Jean-Daniel Meyer



Ref.: cyclope

Zykloplupe

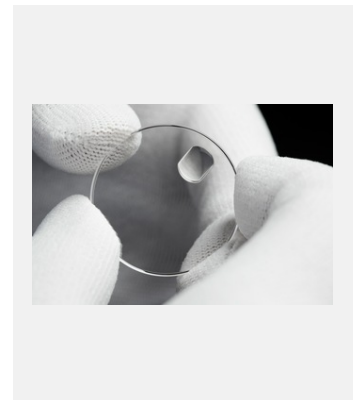
Foto: ©Rolex/Cédric Widmer



Ref.: parts-glass\_0003

Zykloplupe

Foto: ©Rolex/Cédric Widmer



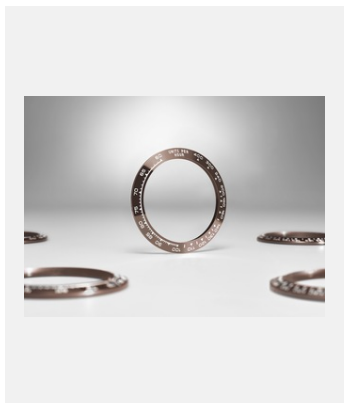
Ref.: ha\_ec938-17

Zykloplupe

Foto: ©Rolex/Cédric Widmer

Kontaktabzug  
**GEHÄUSE**

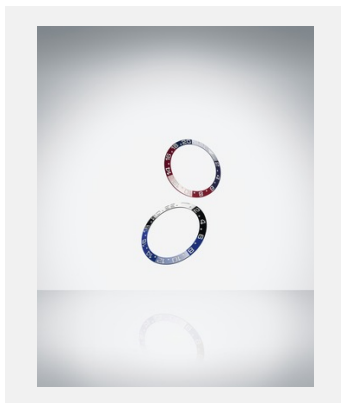
## CERACHROM-LÜNETTE



Ref.: bez\_13cl\_001

Cerachrom-Zahlenscheibe

Foto: ©Rolex/Christophe Lauffenburger

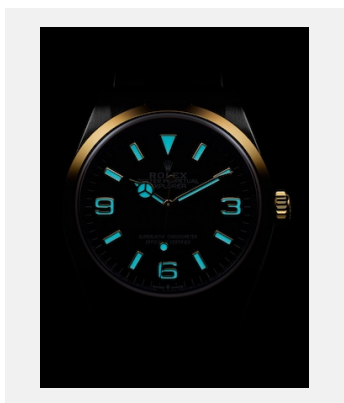


Ref.: elmt\_1612jva\_002\_ret

Cerachrom-Zahlenscheibe in Rot und Blau der GMT-Master II, Cerachrom-Zahlenscheibe in Blau und Schwarz der GMT-Master II

Foto: ©Rolex/Joël von Allmen

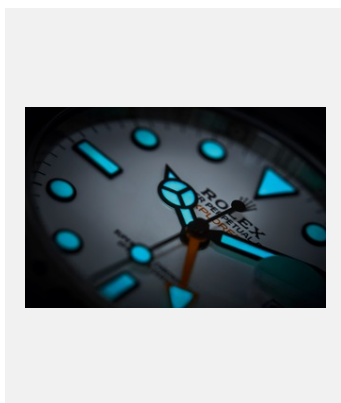
## CHROMALIGHT-ANZEIGE



Ref.: m124273-0001\_21pp\_001

Oyster Perpetual Explorer

Foto: ©Rolex/Alain Costa



Ref.: m226570-0001\_2101uf\_007

Oyster Perpetual Explorer II

Foto: ©Rolex/Maud Rémy-Lonvis