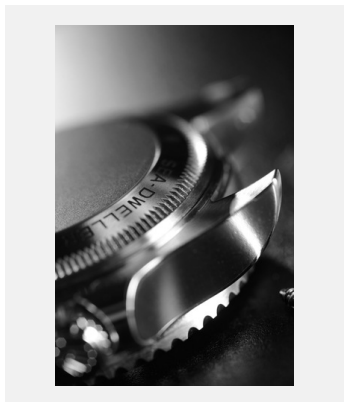


版权页 表壳

蚝式表壳



编码: bracelet-04

蚝式表壳

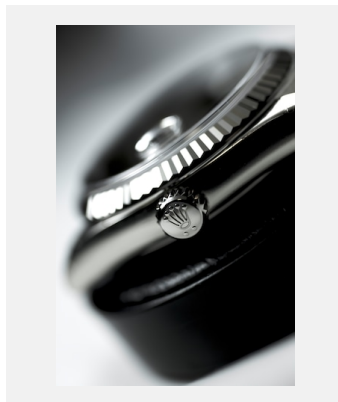
鸣谢: ©Rolex/Thierry Parel



编码: elmt_1611jva_001

蚝式表壳

鸣谢: ©Rolex/Joël von Allmen

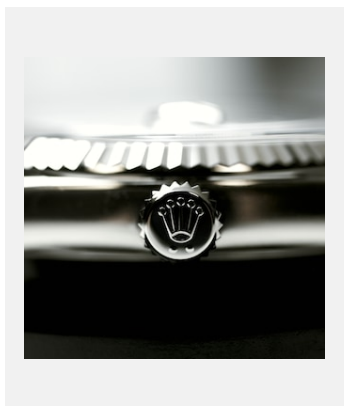


编码: sav_10jdm_040

蚝式表壳

鸣谢: ©Rolex/Jean-Daniel Meyer

上链表冠



编码: rolex_atelier_o5a5991

上链表冠

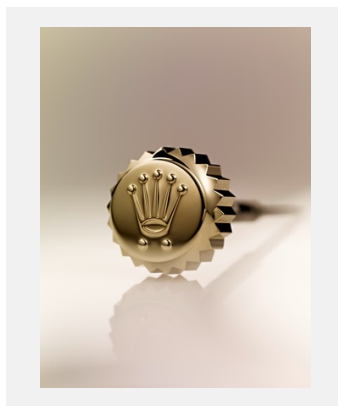
鸣谢: ©Rolex/Jean-Daniel Meyer



编码: couronne-remontoir_13jdm_001

上链表冠

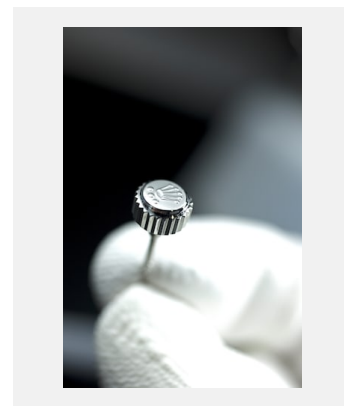
鸣谢: ©Rolex/Jean-Daniel Meyer



编码: couronne-remontoir_13jdm_002

上链表冠

鸣谢: ©Rolex/Jean-Daniel Meyer



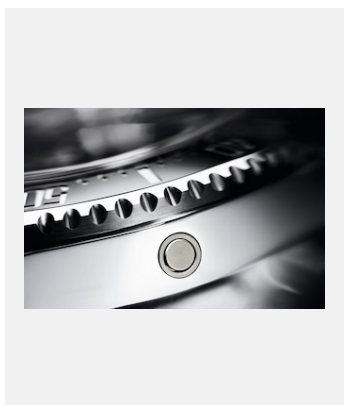
编码: sav_10jdm_030

上链表冠

鸣谢: ©Rolex/Jean-Daniel Meyer

版权页
表壳

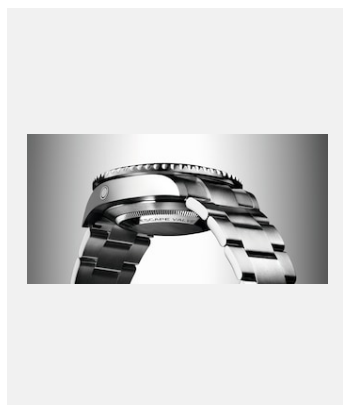
排氦阀门



编码: m126600-0001_1701ac_007-new

排氦阀门

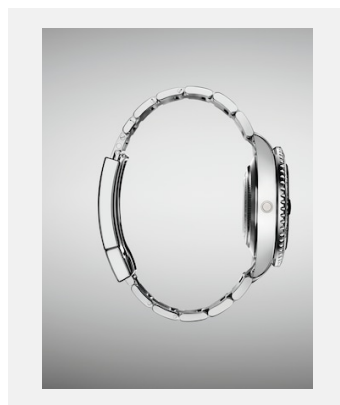
鸣谢: ©Alain Costa



编码: m126600-0001_1701ac_004_press

排氦阀门

鸣谢: ©Alain Costa



编码: m126600-0001_1701ac_010-1

排氦阀门

鸣谢: ©Alain Costa

小窗凸透镜



编码: cyclope_13jdm_006

小窗凸透镜

鸣谢: ©Rolex/Jean-Daniel Meyer



编码: cyclope

小窗凸透镜

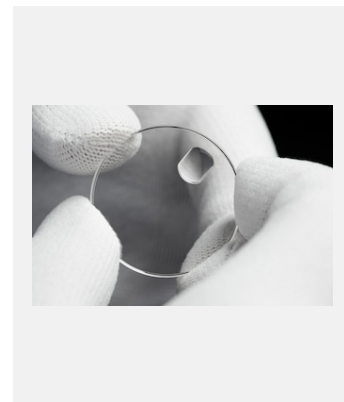
鸣谢: ©Rolex/Cédric Widmer



编码: parts-glass_0003

小窗凸透镜

鸣谢: ©Rolex/Cédric Widmer



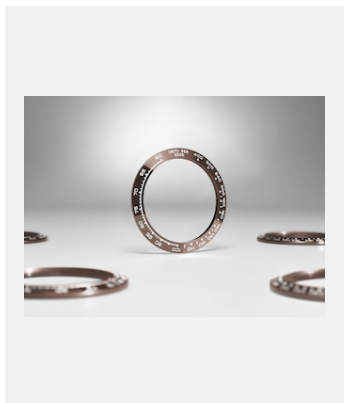
编码: ha_ec938-17

小窗凸透镜

鸣谢: ©Rolex/Cédric Widmer

版权页
表壳

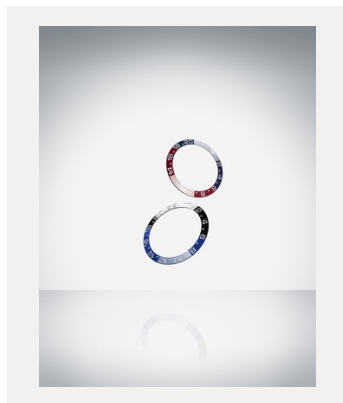
CERACHROM字圈



编码: bez_13cl_001

CERACHROM字圈

鸣谢: ©Rolex/Christophe
Lauffenburger

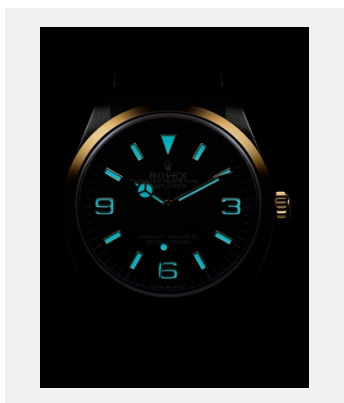


编码: elmt_1612jva_002_ret

格林尼治型 II 的红色及蓝色Cerachrom
字圈、格林尼治型 II 的蓝色及黑色
Cerachrom字圈

鸣谢: ©Rolex/Joël von Allmen

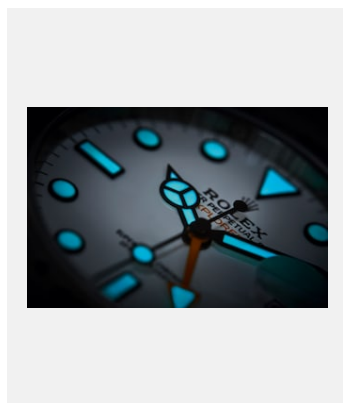
CHROMALIGHT夜光显示



编码: m124273-0001_21pp_001

蚝式恒动探险家型

鸣谢: ©Rolex/Alain Costa



编码: m226570-0001_2101uf_007

蚝式恒动探险家型 II

鸣谢: ©Rolex/Maud Rémy-Lonvis