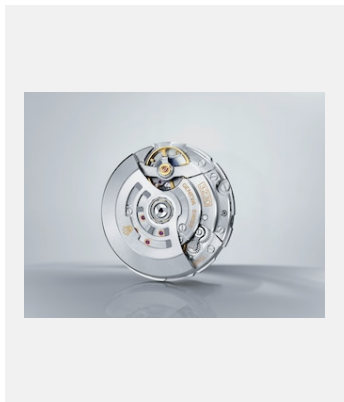


컨택시트
무브먼트

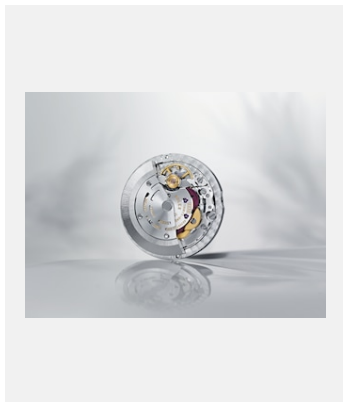
퍼페츄얼 무브먼트



레퍼런스: movt3230_b_2003jdm_001r

무브먼트 3230

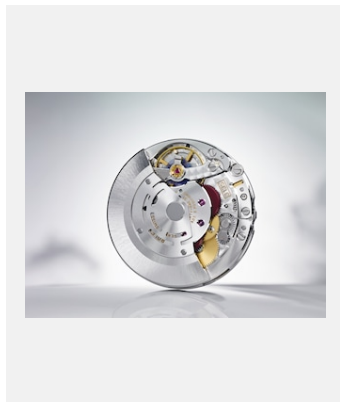
크레딧: © Rolex/Jean-Daniel Meyer



레퍼런스: movt_2236_13jdm_001

무브먼트 2236

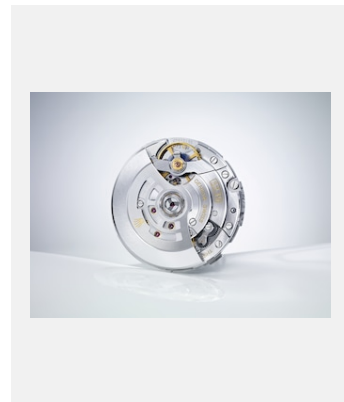
크레딧: ©Rolex/Jean-Daniel Meyer



레퍼런스: movt_3135_13jdm_001

무브먼트 3135

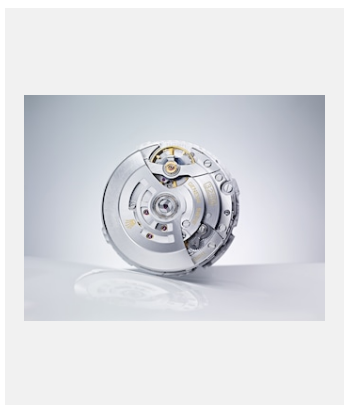
크레딧: ©Rolex/Jean-Daniel Meyer



레퍼런스: movt_3235_14jdm_001

무브먼트 3235

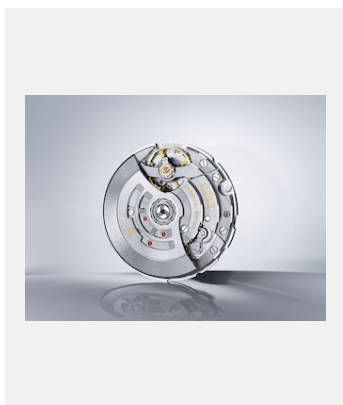
크레딧: ©Rolex/Jean-Daniel Meyer



레퍼런스: 3255_1502jdm_001

무브먼트 3255

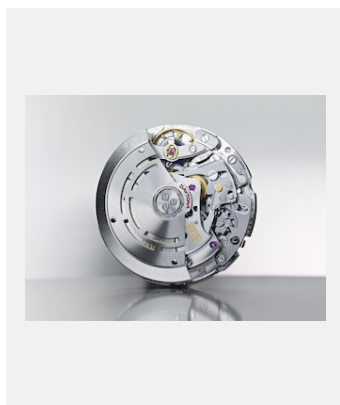
크레딧: ©Rolex/Jean-Daniel Meyer



레퍼런스: movt_3285_17jdm_001

무브먼트 3285

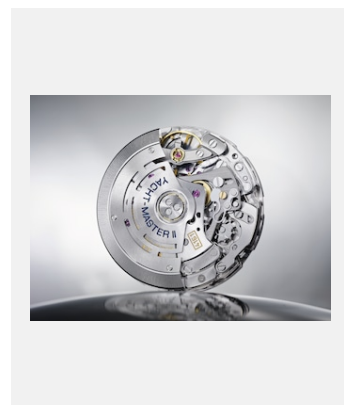
크레딧: ©Rolex/Jean-Daniel Meyer



레퍼런스: movt_4130_13jdm_001

무브먼트 4130

크레딧: ©Rolex/Jean-Daniel Meyer

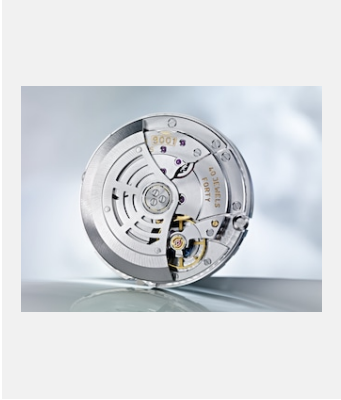


레퍼런스: movt_4161_13jdm_001

무브먼트 4161

크레딧: ©Rolex/Jean-Daniel Meyer

컨택시트
무브먼트



레퍼런스: movt_9001_14jdm_001

무브먼트 9001

크레딧: ©Rolex/Jean-Daniel Meyer

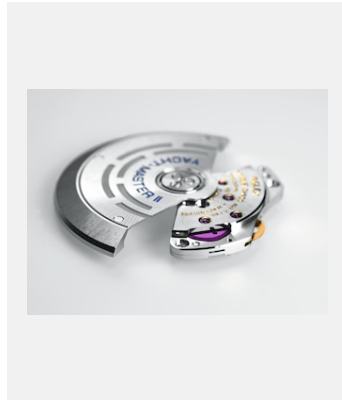
퍼페츄얼 로터



레퍼런스: elements-module-remontage

퍼페츄얼 로터

크레딧: ©Rolex/Christophe
Lauffenburger



레퍼런스: module-remontage-automatique

퍼페츄얼 로터

크레딧: ©Rolex/Christophe
Lauffenburger

컨택시트
무브먼트

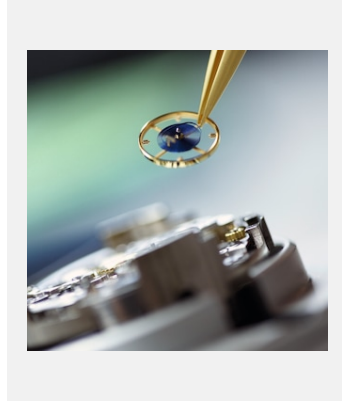
파라크롬 헤어스프링



레퍼런스: elmt_1502jdm_001

파라크롬 헤어스프링

크레딧: ©Rolex/Christophe
Lauffenburger

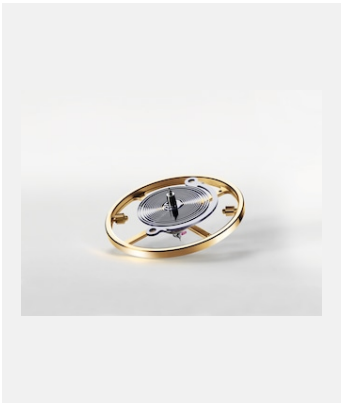


레퍼런스: bie10jdm_001

밸런스 휠 및 헤어스프링 장착

크레딧: ©Rolex/Jean-Daniel Meyer

실록시 헤어스프링



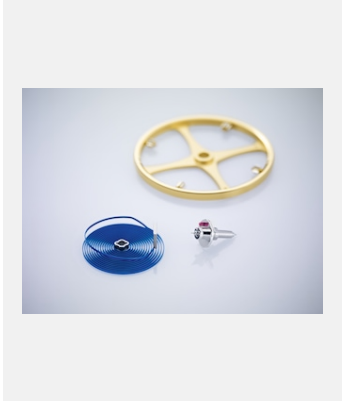
레퍼런스: syloxi_hairspring_01

실록시 헤어스프링

크레딧: ©Rolex/Christophe
Lauffenburger

컨택시트
무브먼트

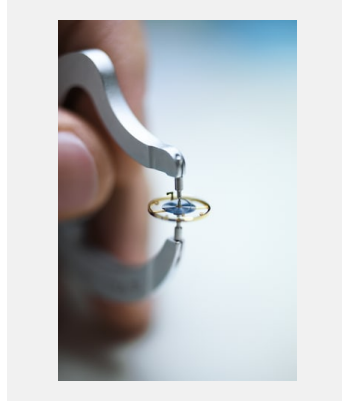
밸런스 휠



레퍼런스: elmt_1502jdm_002

밸런스 휠

크레딧: ©Rolex/Christophe
Lauffenburger

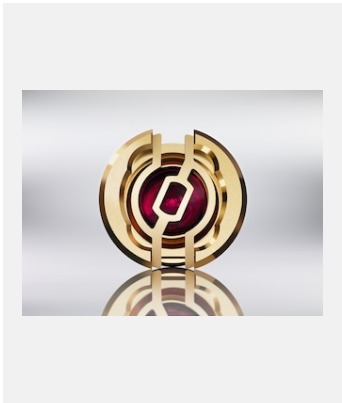


레퍼런스: sav_10jdm_016

밸런스 휠

크레딧: ©Rolex/Jean-Daniel Meyer

파라플렉스



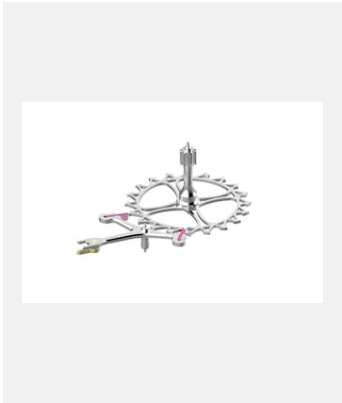
레퍼런스: elmt_1411jdm_001

파라플렉스

크레딧: ©Rolex/Jean-Daniel Meyer

컨택시트
무브먼트

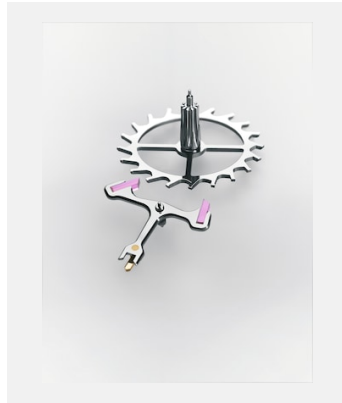
이스케이프먼트



레퍼런스: nouvel-echappement-chronergy-3255

새로운 크로너지 이스케이프먼트

크레딧: © Rolex



레퍼런스: echappement_1

이스케이프먼트

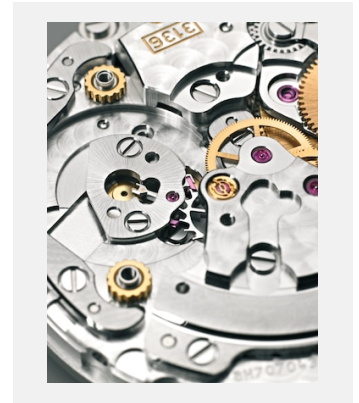
크레딧: ©Rolex/Christophe
Lauffenburger



레퍼런스: echappement_2

이스케이프먼트

크레딧: ©Rolex/Christophe
Lauffenburger



레퍼런스: echappement_3

이스케이프먼트

크레딧: ©Rolex/Christophe
Lauffenburger