

版权页
机芯

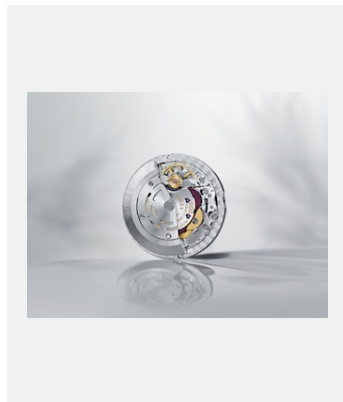
恒动机芯



编码: movt3230_b_2205dh_001-v2

3230型机芯

鸣谢: © Rolex/Jean-Daniel Meyer



编码: movt_2236_13jdm_001

2236型机芯

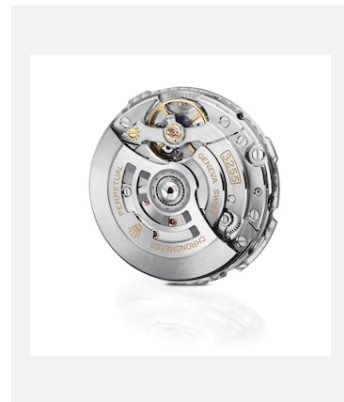
鸣谢: ©Rolex/Jean-Daniel Meyer



编码: movt3235_c_2205dh_001-v2

3235型机芯

鸣谢: ©Rolex/Jean-Daniel Meyer



编码: movt3255_a_2205dh_001-v3

3255型机芯

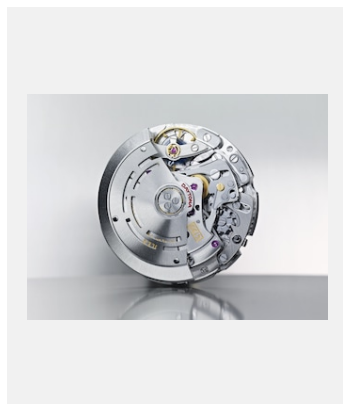
鸣谢: ©Rolex/Jean-Daniel Meyer



编码: movt3285_a_2205dh_001-v2

3285型机芯

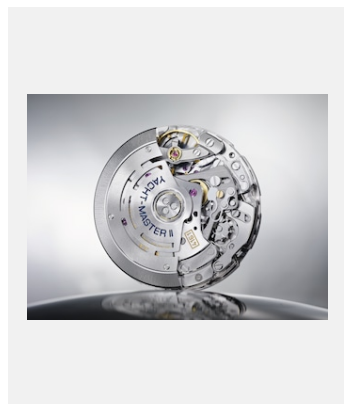
鸣谢: ©Rolex/Jean-Daniel Meyer



编码: movt_4130_13jdm_001

4130型机芯

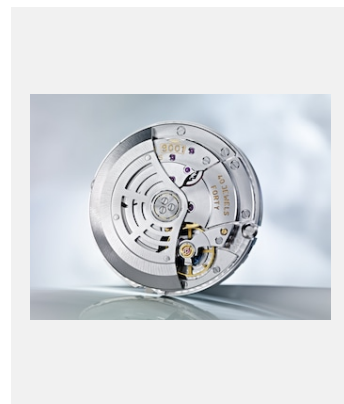
鸣谢: ©Rolex/Jean-Daniel Meyer



编码: movt_4161_13jdm_001

4161型机芯

鸣谢: ©Rolex/Jean-Daniel Meyer



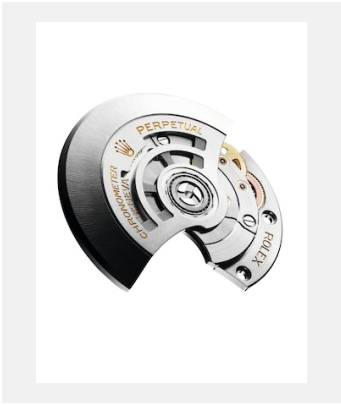
编码: movt_9001_14jdm_001

9001型机芯

鸣谢: ©Rolex/Jean-Daniel Meyer

版权页
机芯

恒动摆陀



编码: mov_20rg_001_r

恒动摆陀

鸣谢: ©Rolex/Christophe
Lauffenburger

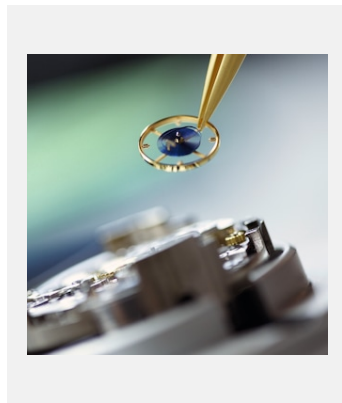
PARACHROM游丝



编码: elmt_1502jdm_001

Parachrom游丝

鸣谢: ©Rolex/Christophe
Lauffenburger



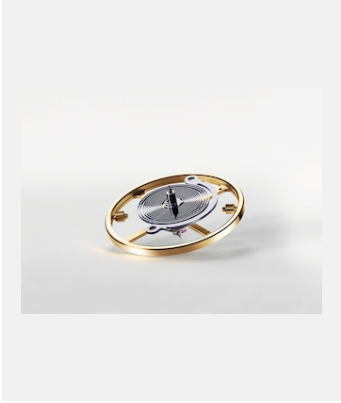
编码: bie10jdm_001

装配平衡摆轮及游丝

鸣谢: ©Rolex/Jean-Daniel Meyer

版权页
机芯

SYLOXI硅游丝

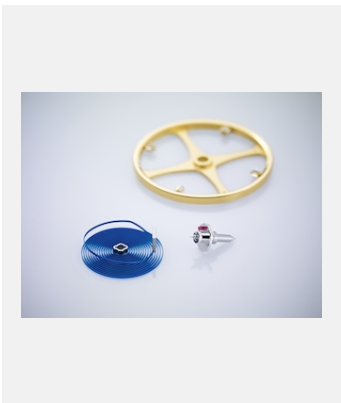


编码: syloxi_hairspring_01

Syloxi硅游丝

鸣谢: ©Rolex/Christophe
Lauffenburger

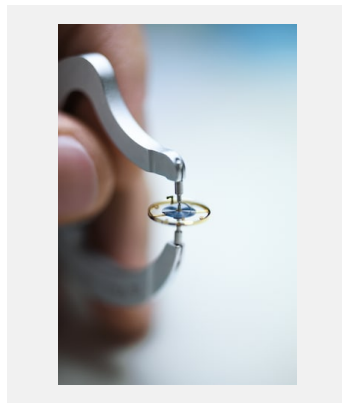
平衡摆轮



编码: elmt_1502jdm_002

平衡摆轮

鸣谢: ©Rolex/Christophe
Lauffenburger



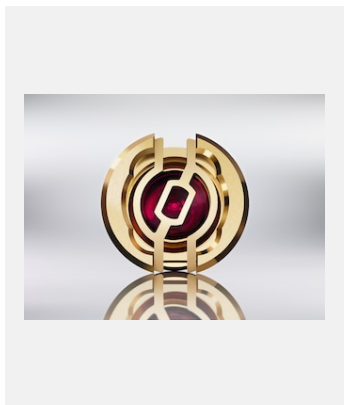
编码: sav_10jdm_016

平衡摆轮

鸣谢: ©Rolex/Jean-Daniel Meyer

版权页
机芯

PARAFLEX缓震装置



编码: elmt_1411jdm_001

Paraflex缓震装置

鸣谢: ©Rolex/Jean-Daniel Meyer

擒纵装置



编码: elmt_21cw_006

新一代Chronergy擒纵系统

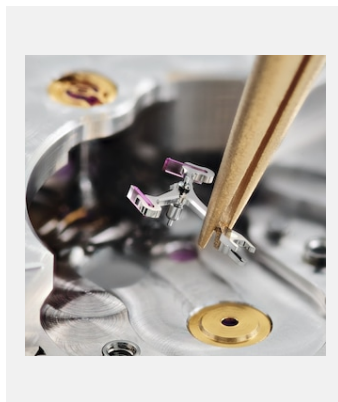
鸣谢: © Rolex



编码: elmt_1601jva_009

擒纵装置

鸣谢: ©Rolex/Christophe Lauffenburger



编码: elmt_1901cw_002

擒纵装置

鸣谢: ©Rolex/Christophe Lauffenburger