

版權頁  
機芯

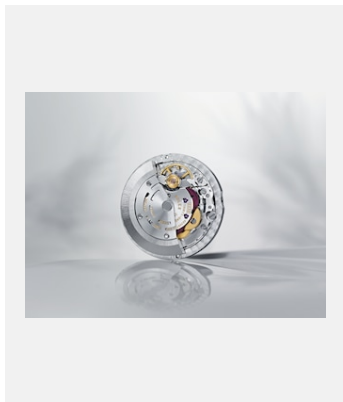
恒動機芯



編碼: movt3230\_b\_2205dh\_001-v2

3230型機芯

鳴謝: © Rolex/Jean-Daniel Meyer



編碼: movt\_2236\_13jdm\_001

2236型機芯

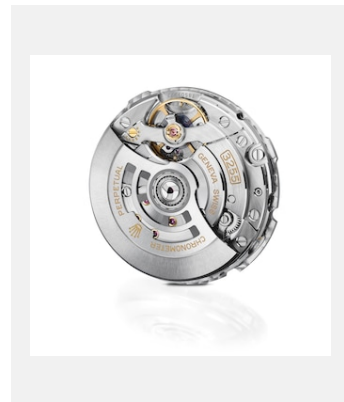
鳴謝: ©Rolex/Jean-Daniel Meyer



編碼: movt3235\_c\_2205dh\_001-v2

3235型機芯

鳴謝: ©Rolex/Jean-Daniel Meyer



編碼: movt3255\_a\_2205dh\_001-v3

3255型機芯

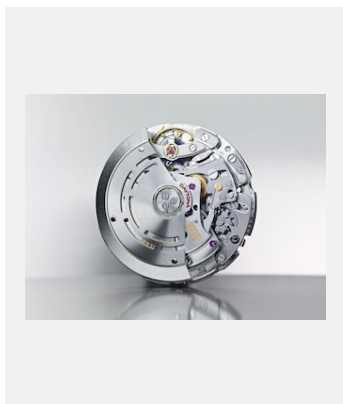
鳴謝: ©Rolex/Jean-Daniel Meyer



編碼: movt3285\_a\_2205dh\_001-v2

3285型機芯

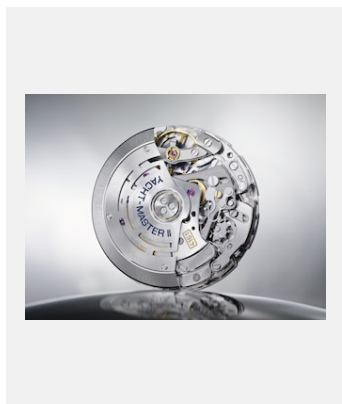
鳴謝: ©Rolex/Jean-Daniel Meyer



編碼: movt\_4130\_13jdm\_001

4130型機芯

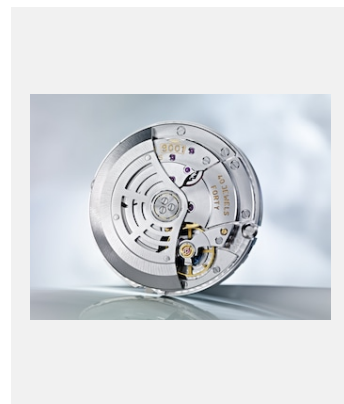
鳴謝: ©Rolex/Jean-Daniel Meyer



編碼: movt\_4161\_13jdm\_001

4161型機芯

鳴謝: ©Rolex/Jean-Daniel Meyer



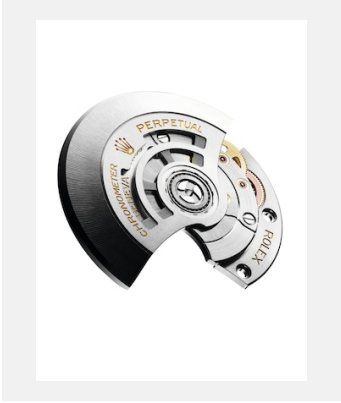
編碼: movt\_9001\_14jdm\_001

9001型機芯

鳴謝: ©Rolex/Jean-Daniel Meyer

版權頁  
機芯

恒動擺陀



編碼: mov\_20rg\_001\_r

恒動擺陀

鳴謝: ©Rolex/Christophe  
Lauffenburger

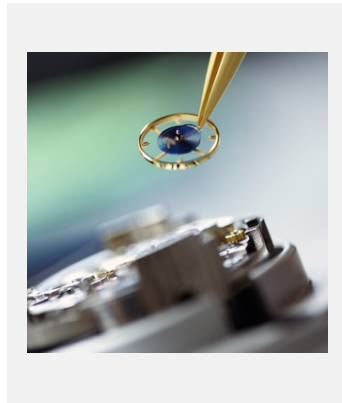
PARACHROM游絲



編碼: elmt\_1502jdm\_001

Parachrom游絲

鳴謝: ©Rolex/Christophe  
Lauffenburger



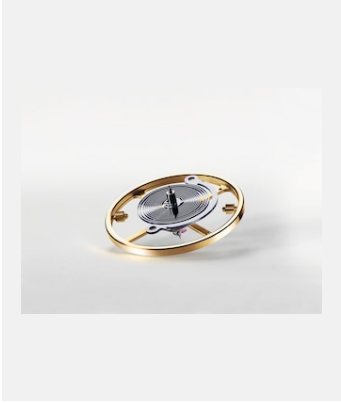
編碼: bie10jdm\_001

裝配平衡擺輪及游絲

鳴謝: ©Rolex/Jean-Daniel Meyer

版權頁  
機芯

SYLOXI矽游絲

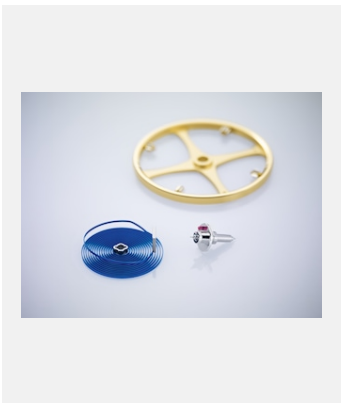


編碼: syloxi\_hairspring\_01

Syloxi矽游絲

鳴謝: ©Rolex/Christophe  
Lauffenburger

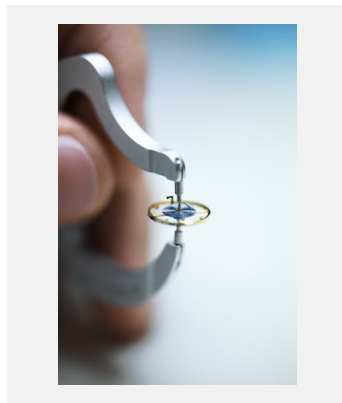
平衡擺輪



編碼: elmt\_1502jdm\_002

平衡擺輪

鳴謝: ©Rolex/Christophe  
Lauffenburger



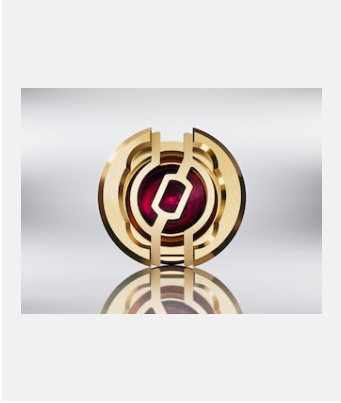
編碼: sav\_10jdm\_016

平衡擺輪

鳴謝: ©Rolex/Jean-Daniel Meyer

版權頁  
機芯

PARAFLEX緩震裝置



編碼: elmt\_1411jdm\_001

Paraflex緩震裝置

鳴謝: ©Rolex/Jean-Daniel Meyer

擒縱裝置



編碼: elmt\_21cw\_006

新一代Chronergy擒縱系統

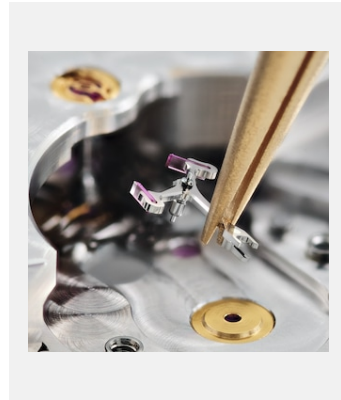
鳴謝: © Rolex



編碼: elmt\_1601jva\_009

擒縱裝置

鳴謝: ©Rolex/Christophe  
Lauffenburger



編碼: elmt\_1901cw\_002

擒縱裝置

鳴謝: ©Rolex/Christophe  
Lauffenburger